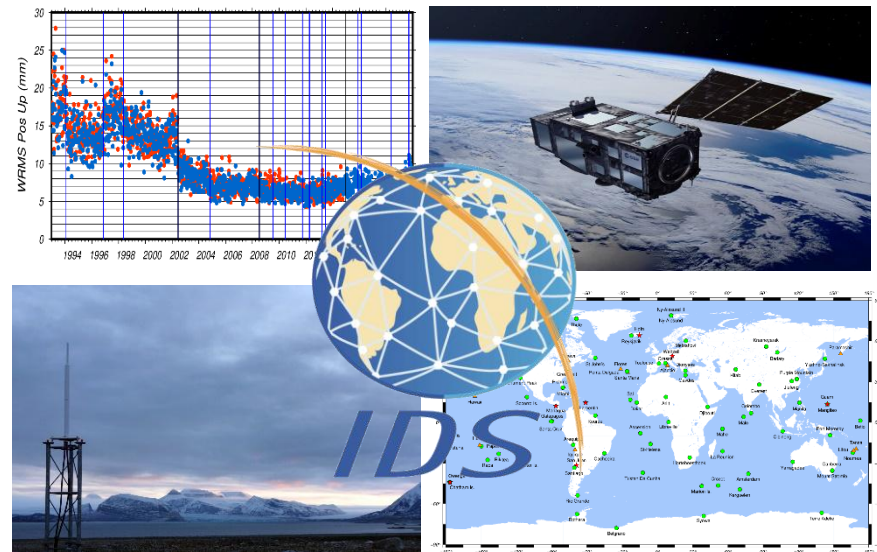


DORIS contribution to ITRF2020-u2024: IDS 25 series





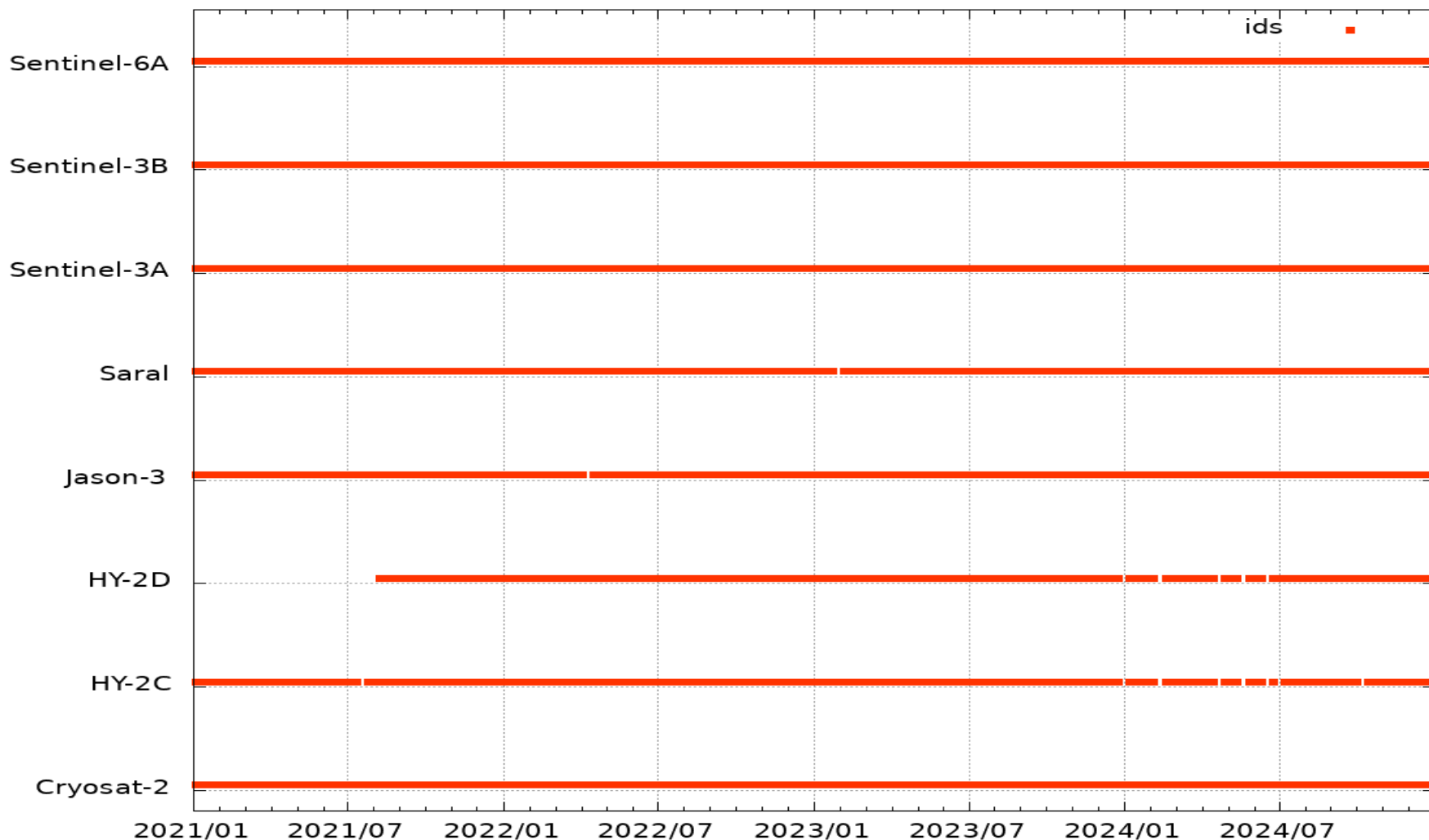
IDS Contribution to ITRF2020-u2024: IDS 25

- **Time span: 2021.0-2025.0.**
- **Nb of weekly SINEX files: 209**
- **IDS AC Contributions:**
 - **ESA 16**
 - **GOP 70**
 - **GRG 54 (up to 2021doy213) and GRG 56 (since 2021doy2220 – new series)**
 - **GSC 60 (new series)**
 - **IGN 22 (new series)**



IDS 25 2024.0-2025.0 – DORIS Missions

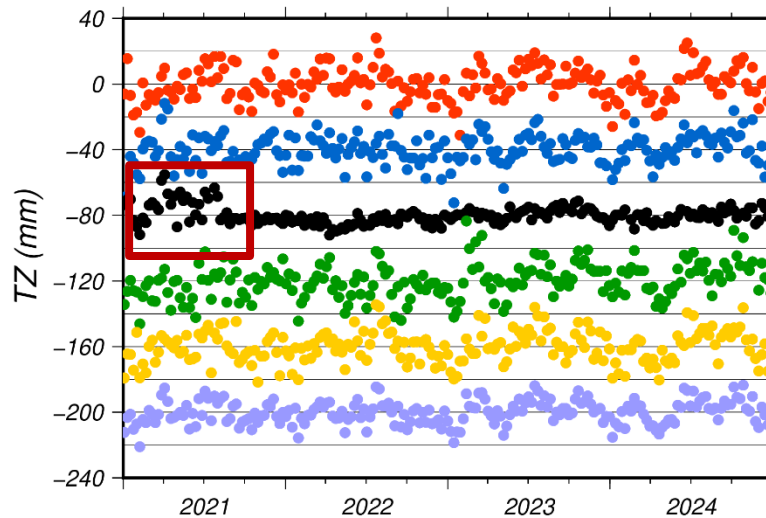
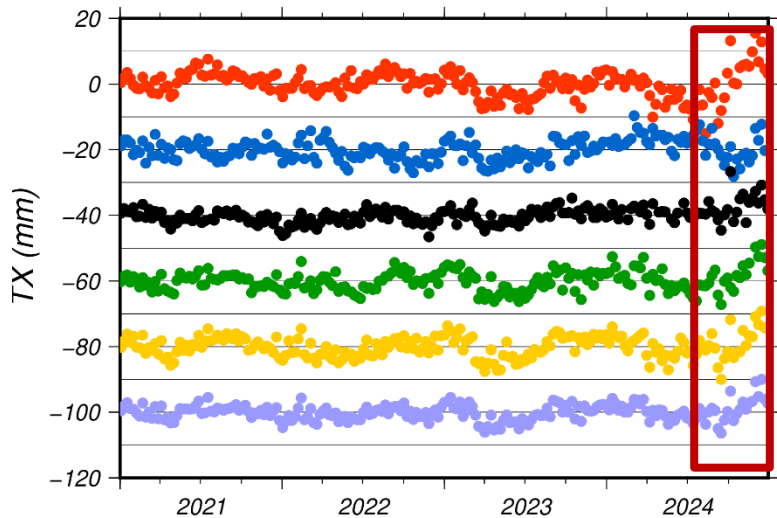
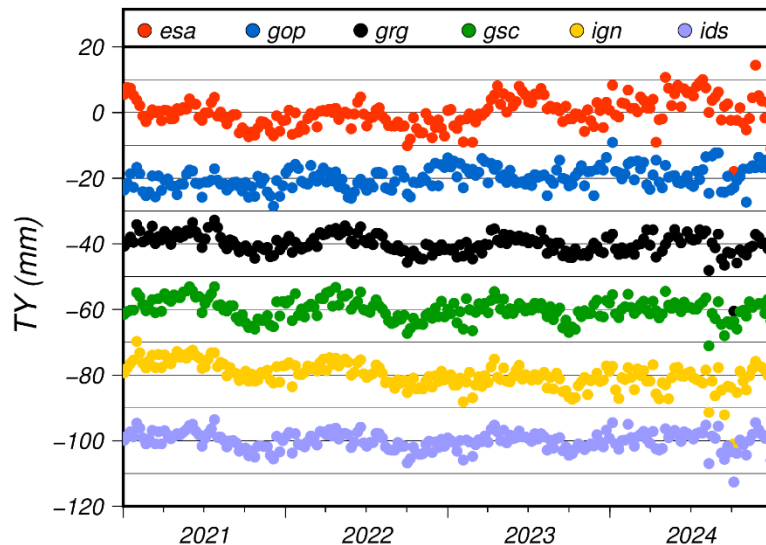
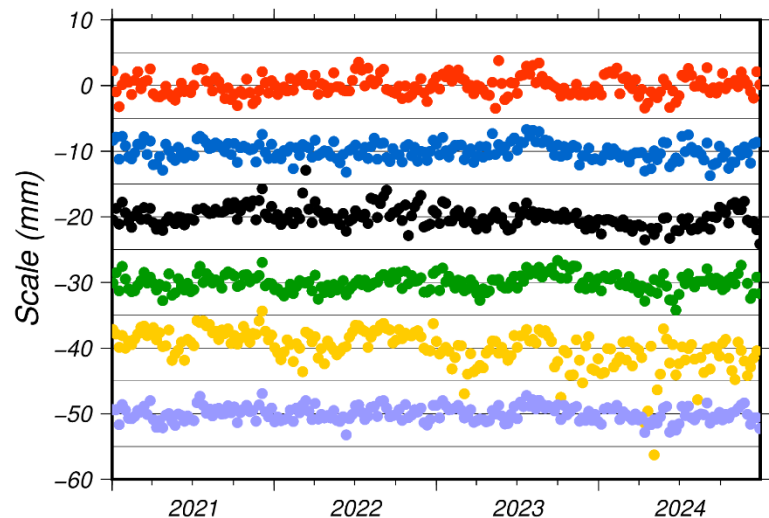
Each week, a satellite is indicated in the mission list of the IDS combined solution if it is included in at least two AC contributions.





Helmert Parameters wrt ITRF2020-u2023

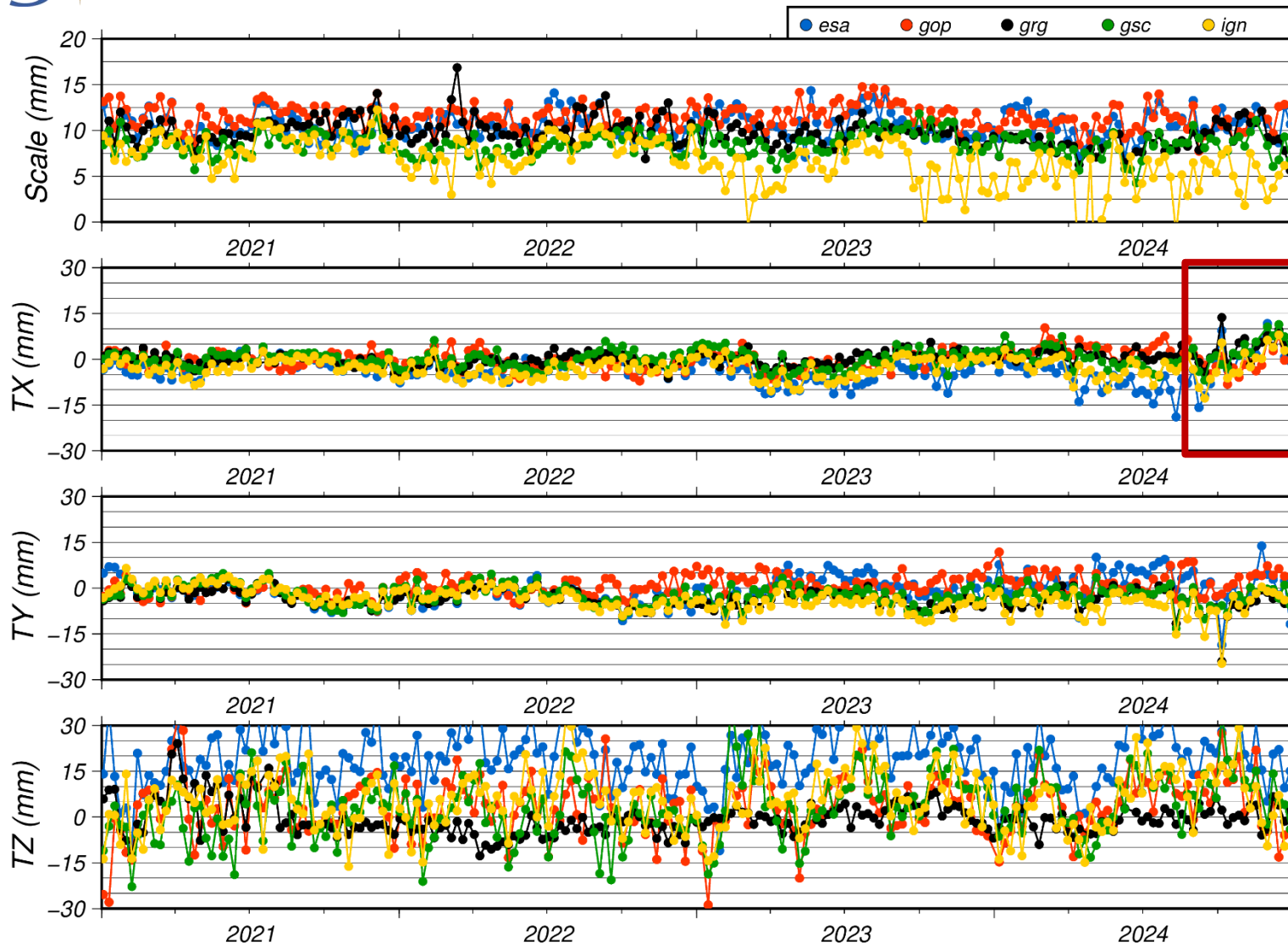
Each series is shifted for a better viewing



GRG: 2021-220
GRG 54 to GRG 56
Conrad effect?

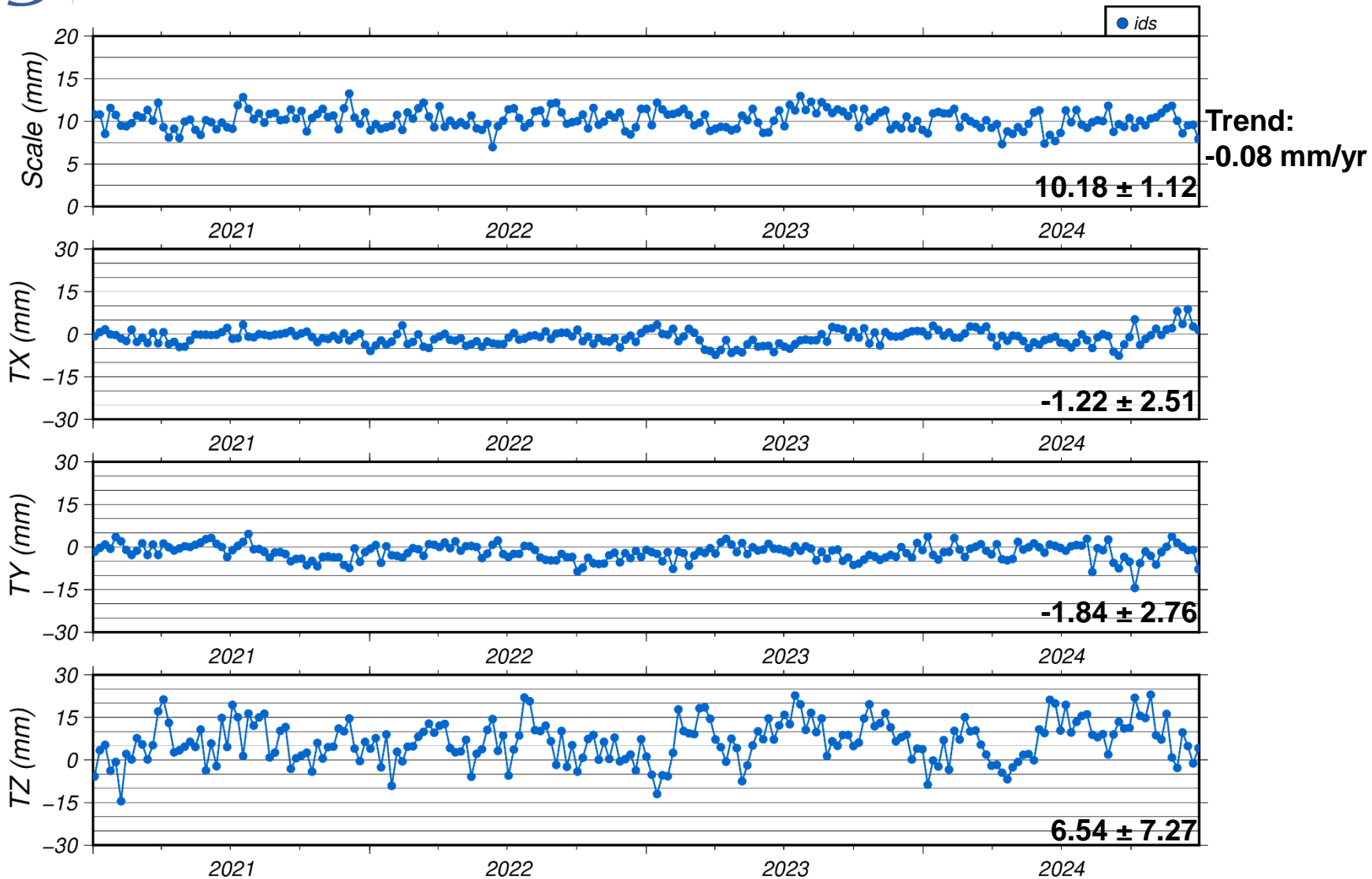


Helmert Parameters wrt ITRF2020-u2023



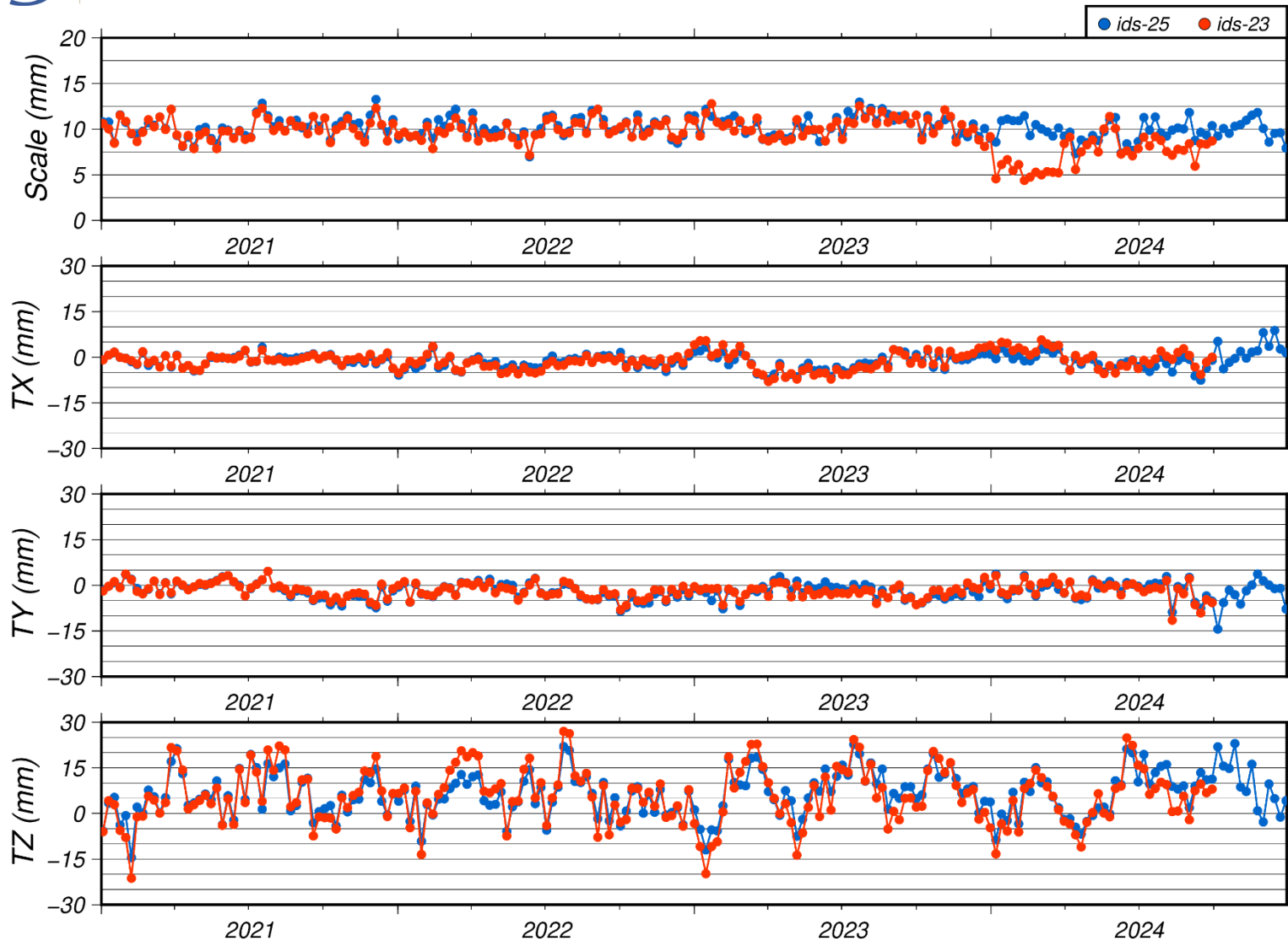


IDS 25 - Helmert Parameters wrt ITRF2020-u2023



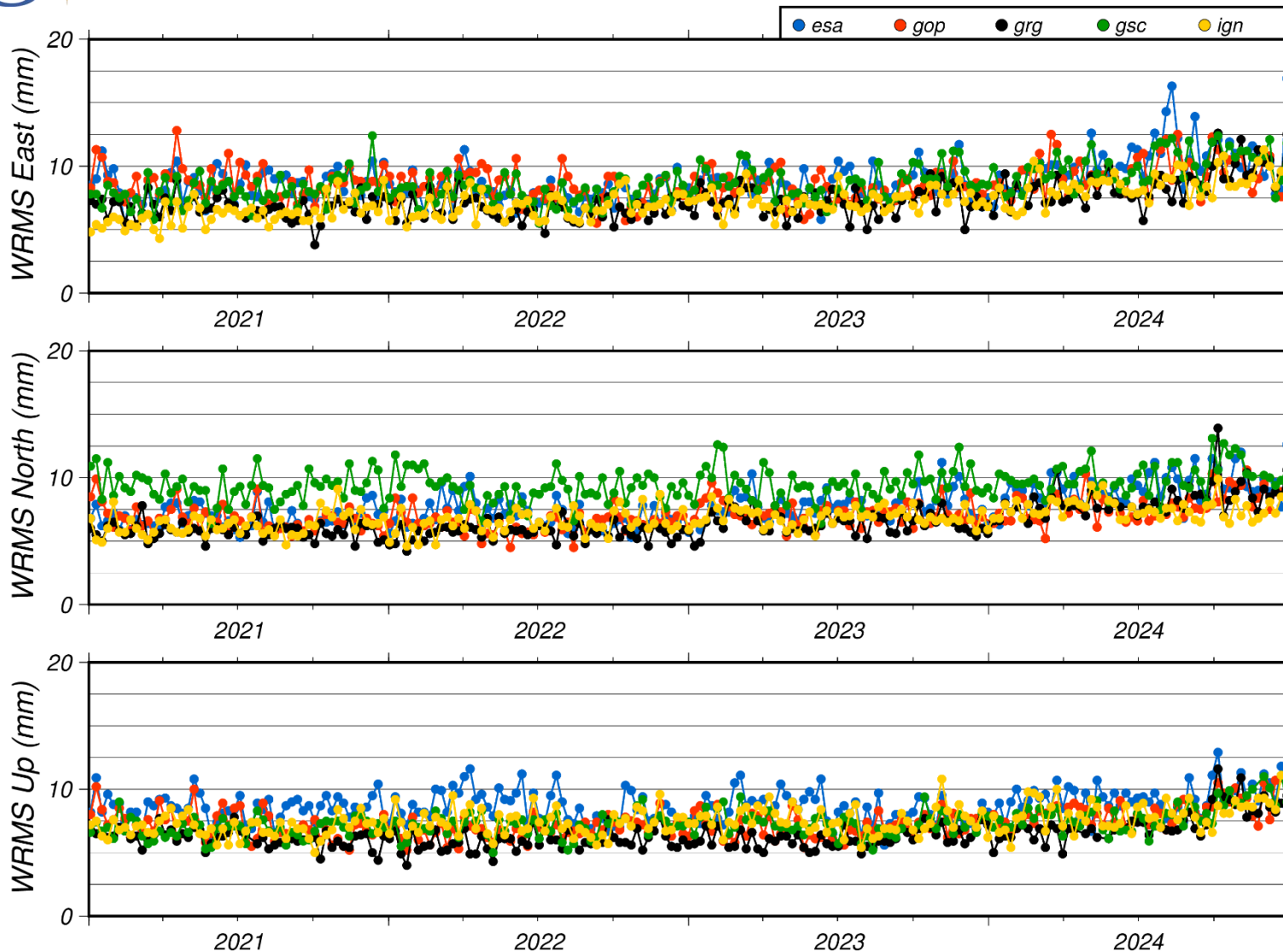


IDS 23/25 - Helmert Parameters wrt ITRF2020-u2023



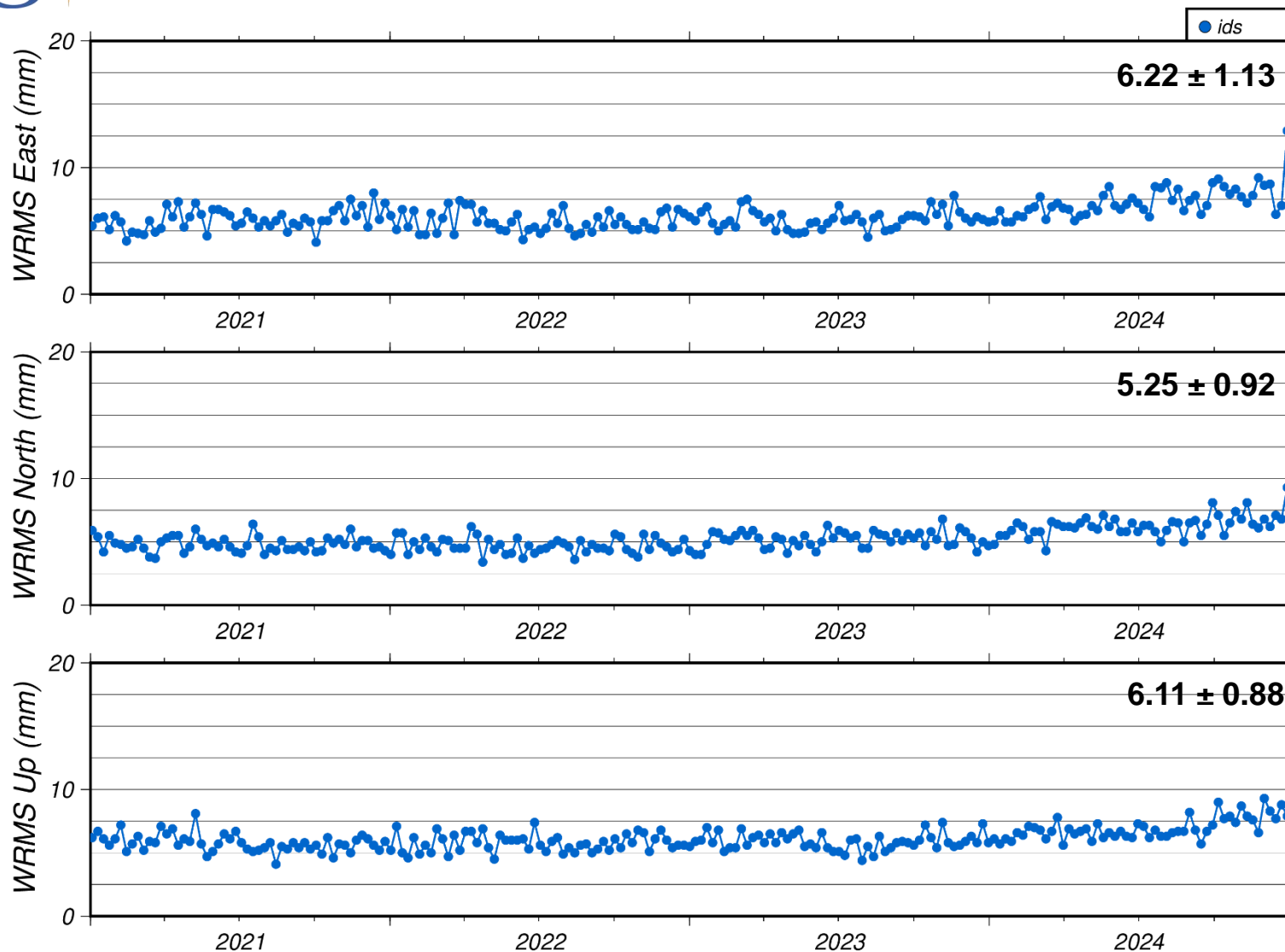


Station Position Residuals wrt ITRF2020-u2023



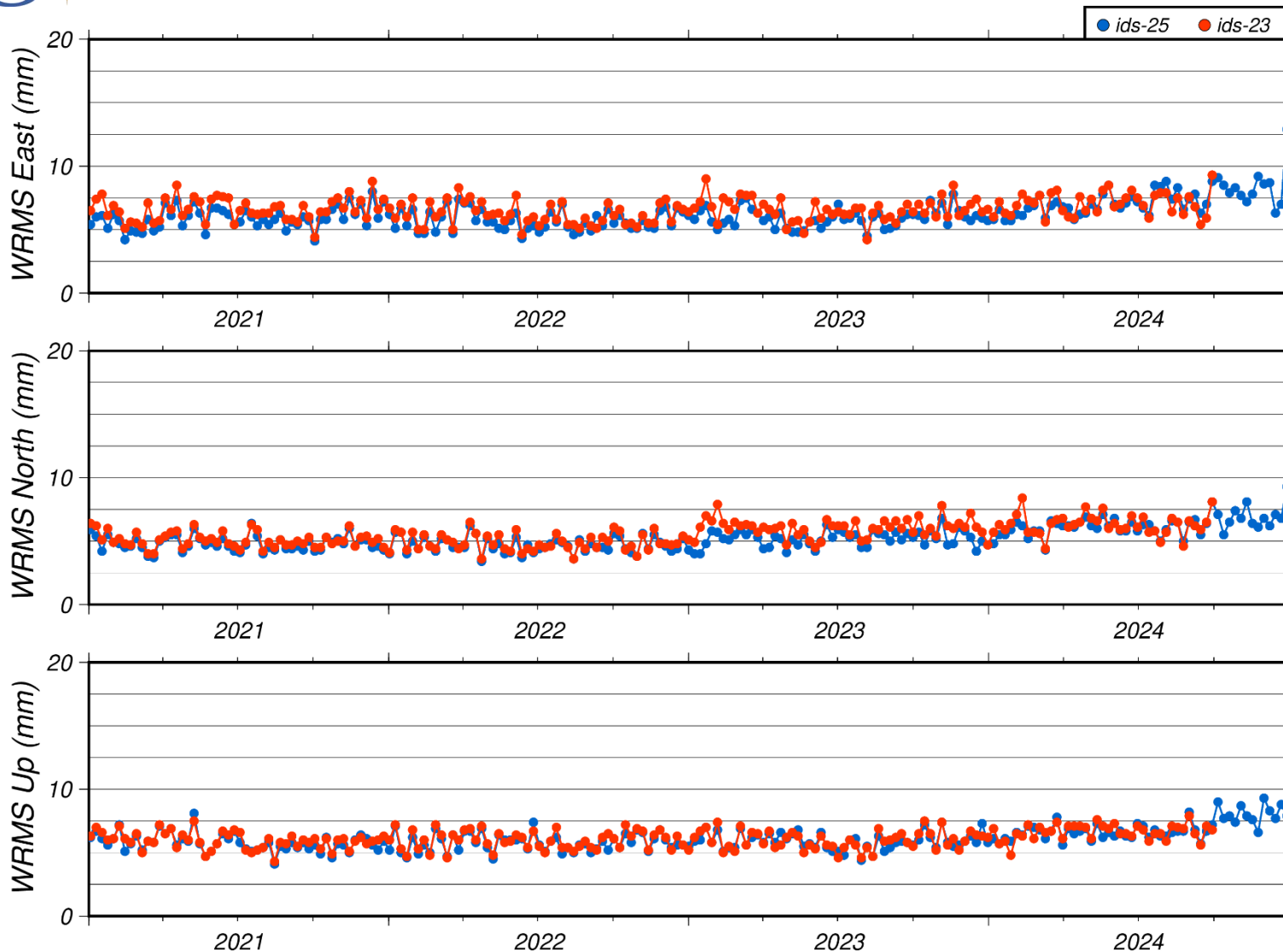


IDS 25 - Station Position Residuals wrt ITRF2020-u2023



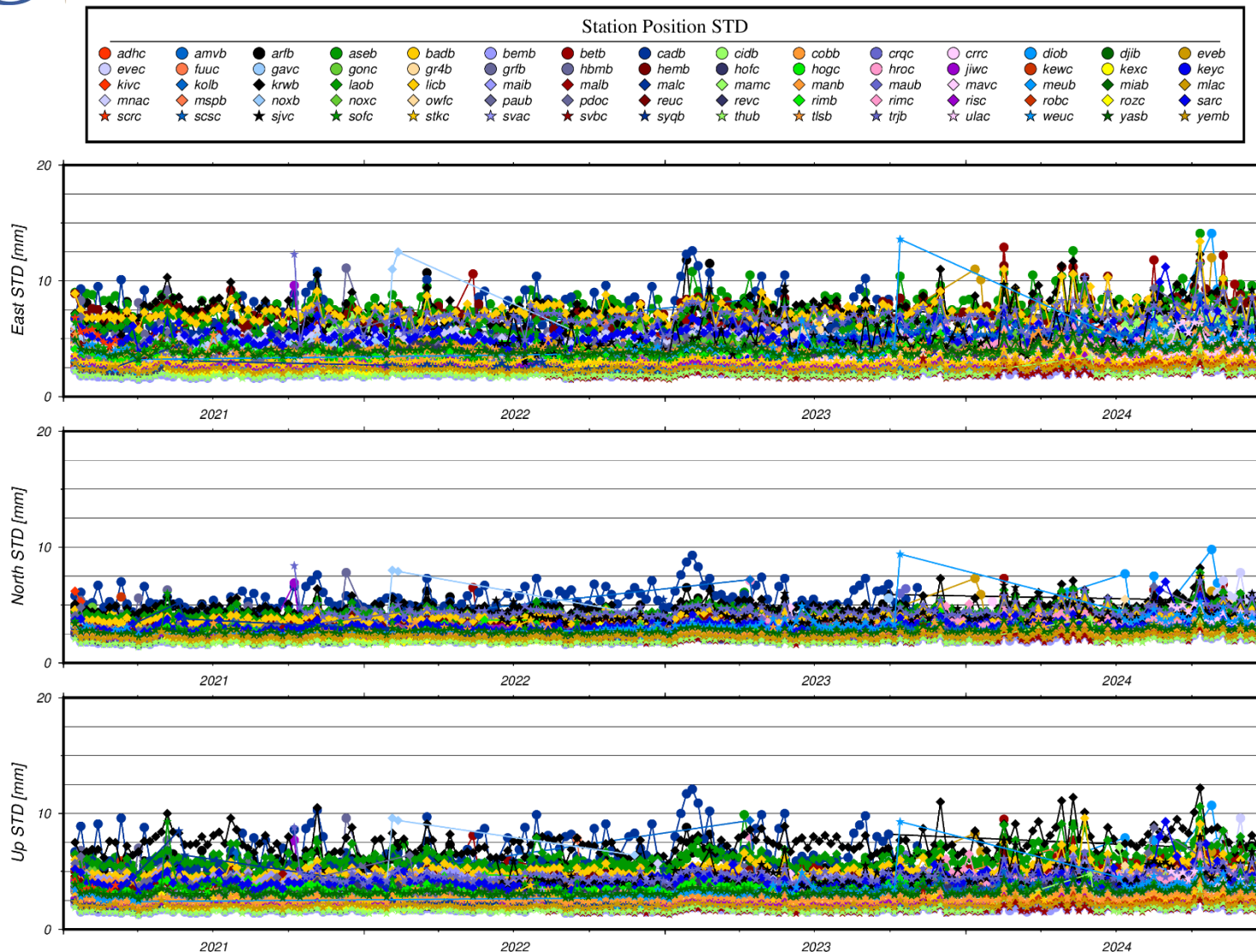


IDS 23/25 - Station Position Residuals wrt ITRF2020-u2023





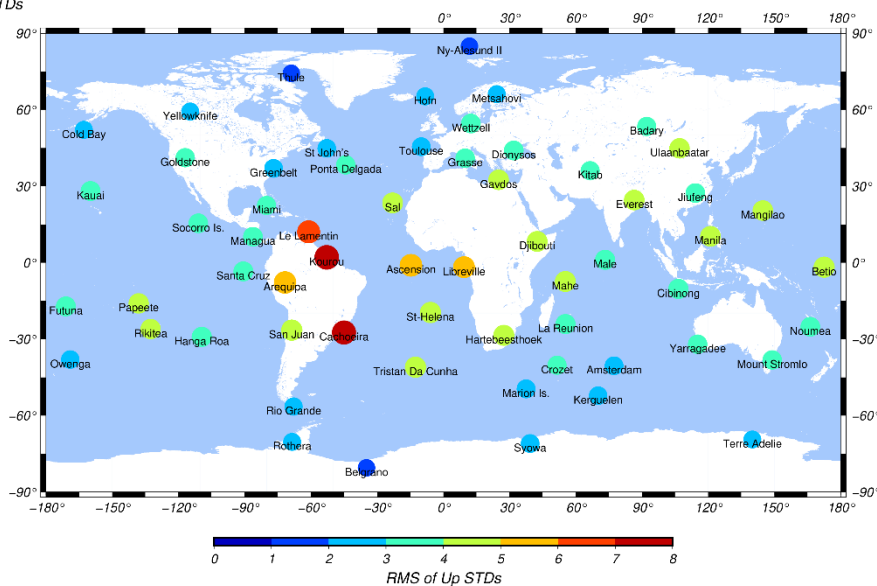
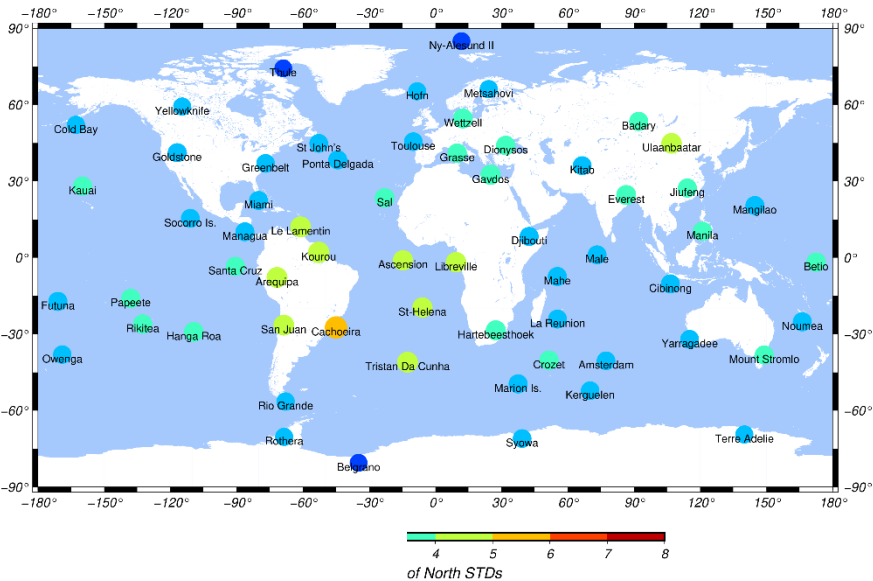
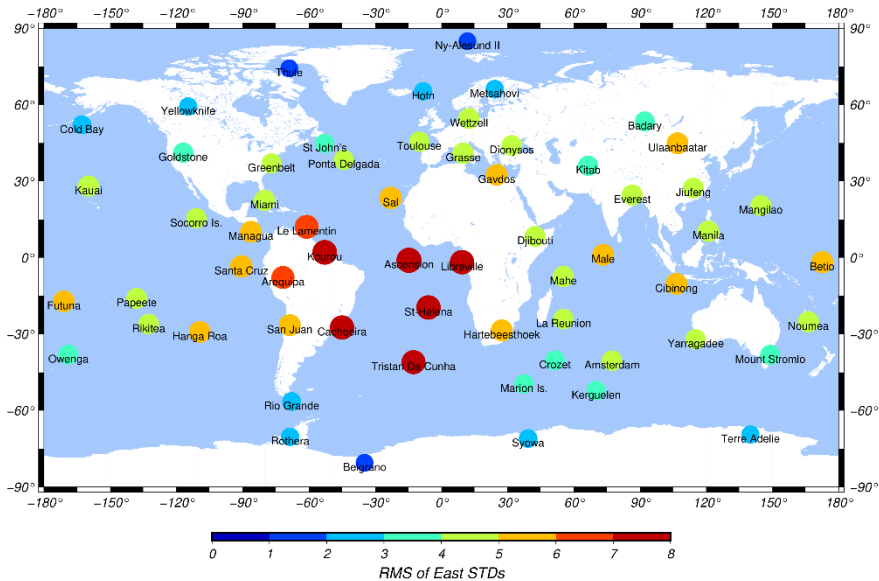
IDS 25 – ENU Station Position Formal Errors





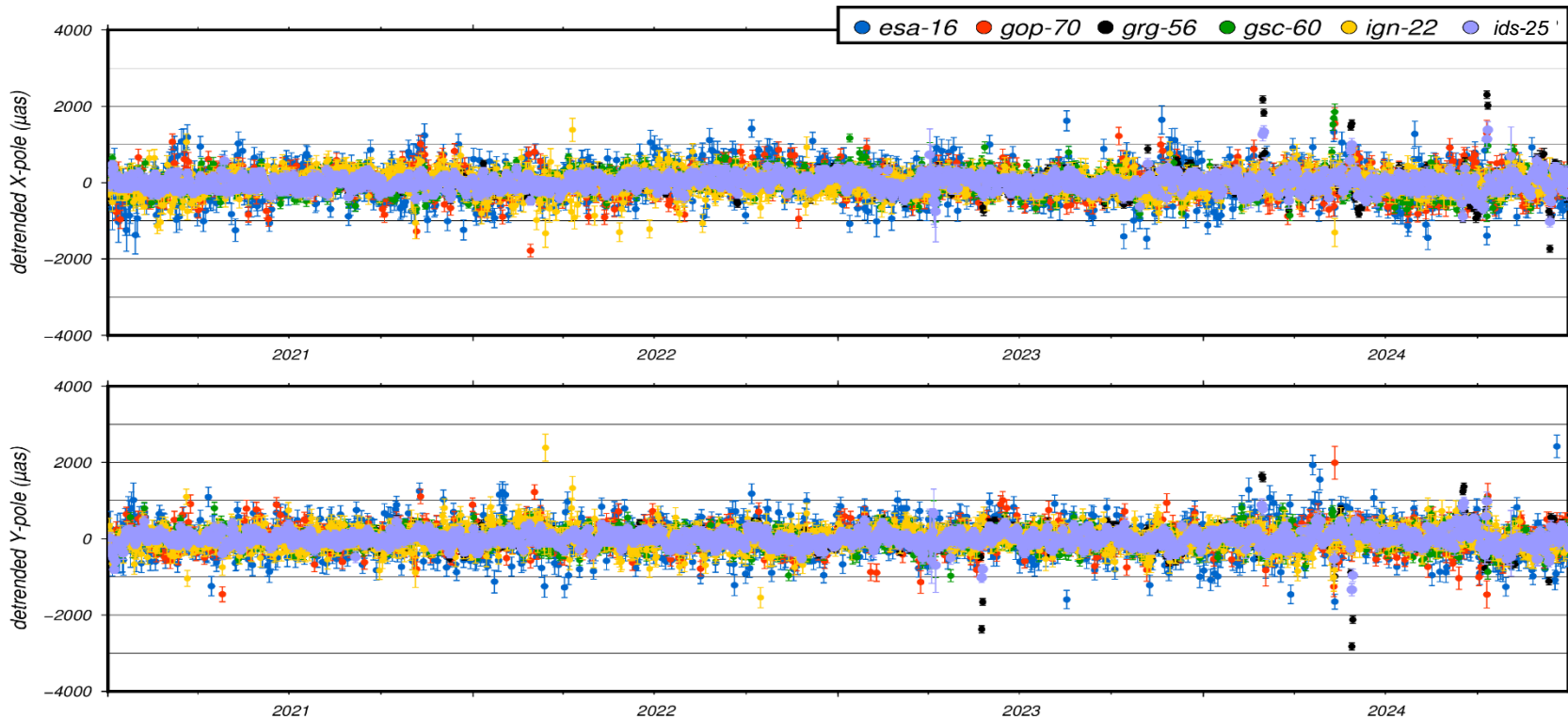
IDS 25 – ENU Station Position Formal Errors

RMS over time period 2021.0-2025.0





EOP Differences wrt IERS C04



AC	serie	# days	trend	X pole (μs)		trend	Y pole (μs)	
				mean	std		mean	std
esa	16	1456	58.385	-0.076	429.247	-40.560	0.551	414.446
gop	70	857	84.852	0.356	360.648	-44.560	0.219	343.187
grg	56	1214	3.425	2.559	263.780	-42.800	-3.071	261.406
gsc	60	1460	13.826	2.071	276.203	-23.260	-0.321	239.673
ign	22	1458	17.703	-3.814	265.679	-8.620	0.258	266.974
ids	25	1467	19.091	1.280	202.311	-31.780	-0.931	193.440



IDS Contribution to ITRF2020-u2024: IDS 25

- **New IDS Combined solution IDS 25 from 5 ACs contributions: ESA 16, GOP 70, GRG 54/56, GSC 60 and IGN 22.**
- **Time span: 2021.0-2025.0.**
- **IDS 25 weekly SINEX files were delivered to the IDS DCs on April 18th.**
- **Nice stability of the IDS 25 scale, Tx and Ty parameters.**
- **IDS 25 station position residuals wrt ITRF2020-u2023 are at the order of 5-6 mm.**
- **IDS 25 X- and Y-pole differences wrt IERS C04 show STDs at the order of 200 μ as.**
- **No combined LOD even if in addition to ESA, GOP started to estimate it since 2024doy098.**



IDS CC Recent and Future Activities

- **DORIS evaluation of the ITRF2020-u2023 solution.**
- **Computation of ESA, GOP, GRG and GSC cumulative solutions from 1993.0 to 2025.0.**
- **Realization of the DPOD2020 version 4.0 based on a DORIS cumulative solution from 1993.0 to 2025.0 aligned onto ITRF2020-u2023.**
- **Tests on a combined LOD.**
- **Oral presentation of the IDS contribution to ITRF2020-u2024 @ EGU 2025 (G2.2 session – room K1 on Monday, 28 April 2025, 17:50).**