



## **News from the IDS CC**

Guilhem Moreaux

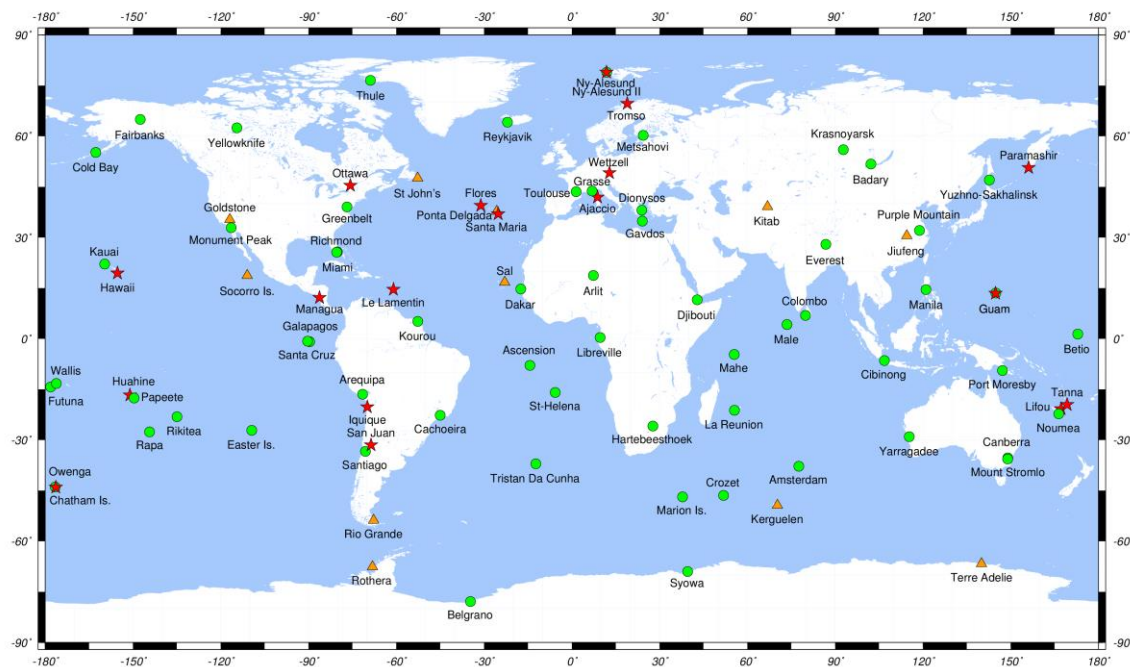


<http://ids-doris.org>

# DPOD2014 Version 4.0

Page 2

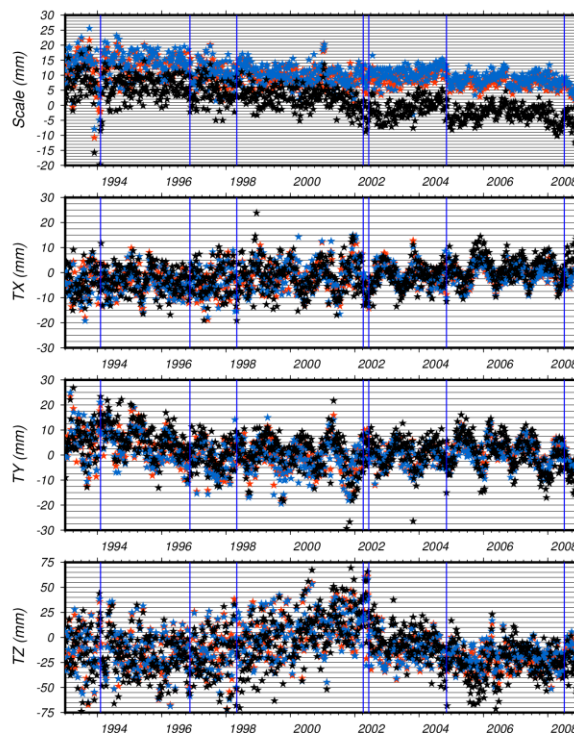
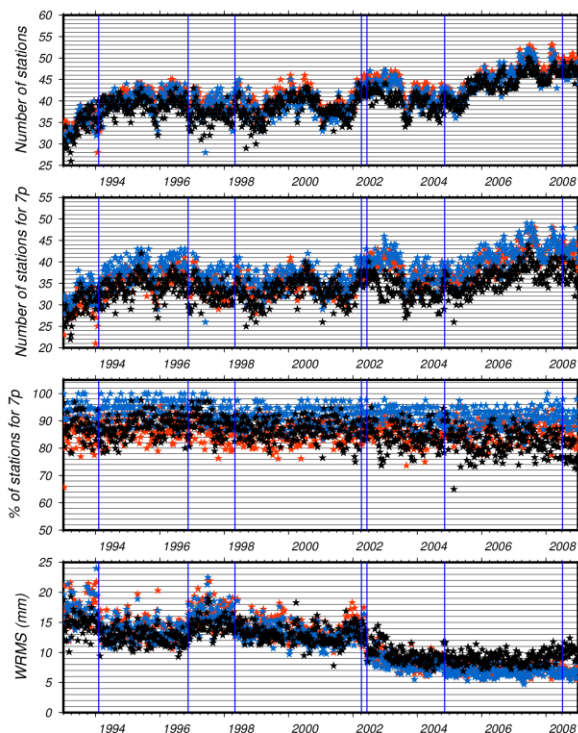
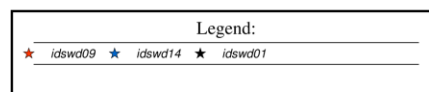
- Based on the DORIS position and velocity cumulative solution ids19d04 (stacking of the IDS combined series ids 12 from 1993 doy 003 to 2018 doy 364).
- Delayed to work on the observation periods to include as much as possible the whole life time of the beacons without any gap (thanks to latest DPOD2008 solution from Pacal).
- Available in SINEX and text formats.
- May be available soon for download.



# New Combined Series

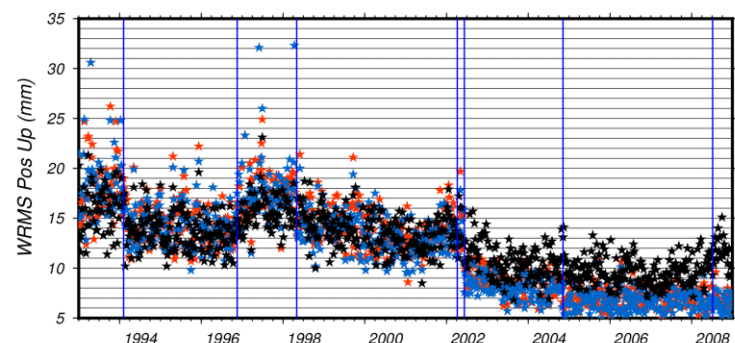
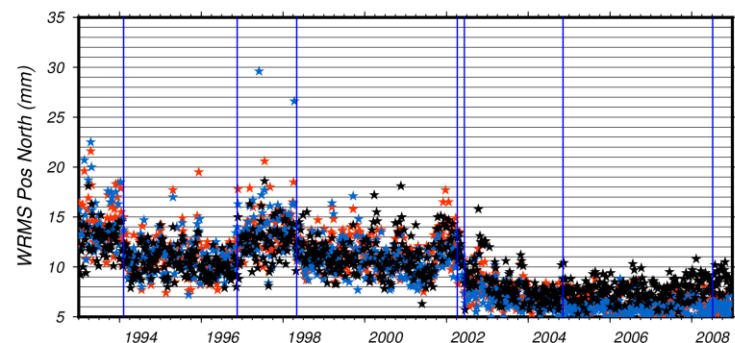
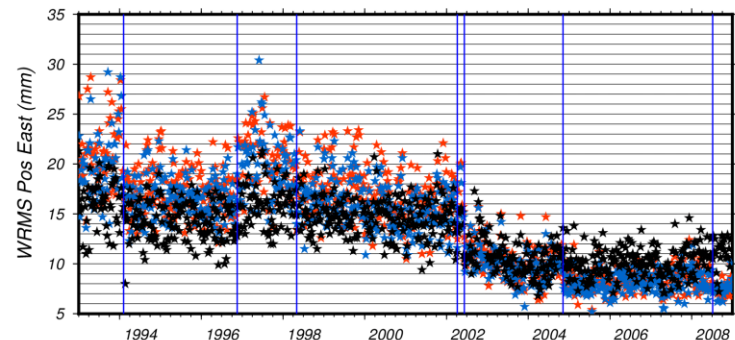
- **ids 14: gop43/50/52 + gsc 40/41 + gsc 26/29/31 + ign 15 + ina 10.**
- **Time period: 1993.0-2019.25.**
- **New parameterization at the IDS AC preprocessing (more stringent).**

Per week comparison to DPOD2014v4





# New Combined Series - Positioning



	[mm]	ids 01	ids 09	ids 14
1993001-1994037	North	12.7 ± 1.7	14.3 ± 2.4	14.4 ± 2.5
	East	16.2 ± 2.4	20.9 ± 3.3	19.9 ± 3.3
	Up	16.0 ± 2.4	18.4 ± 3.4	18.4 ± 3.1
1994037-1996322	North	12.6 ± 1.9	11.1 ± 1.9	10.8 ± 1.6
	East	16.0 ± 2.1	17.2 ± 2.4	16.6 ± 2.0
	Up	15.7 ± 1.8	14.3 ± 2.1	14.0 ± 2.0
1996322-1998123	North	11.3 ± 1.9	13.6 ± 2.0	13.9 ± 3.0
	East	14.7 ± 1.9	20.5 ± 2.8	19.7 ± 3.0
	Up	13.7 ± 1.8	17.6 ± 2.2	17.8 ± 3.2
1996322-1998123	North	11.2 ± 1.2	11.4 ± 1.8	10.8 ± 1.6
	East	14.1 ± 1.6	16.9 ± 2.6	15.9 ± 2.3
	Up	13.9 ± 2.2	14.0 ± 2.0	13.4 ± 1.9

ids 14 performs better than ids 09 with one AC less and sometimes better than ids 01



- **Review of the station position and velocity discontinuity**

➔ **Less unknown breaks**

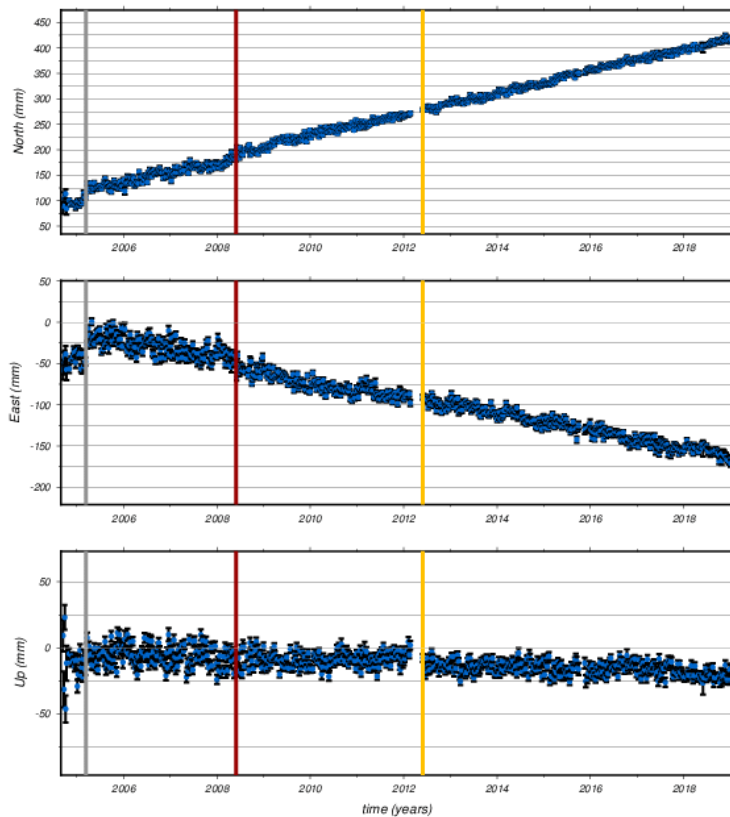
**Not used in the DPOD2014 version 4.**

➔ **New version of the coordinate time series plots delivered to the IDS DCs including date(s) and origin(s) of the discontinuities (geophysical, technical, unknown) for a better understanding by the users. Inspired by plots of the Nevada Geodetic Laboratory.**

# New STCD plots for the IDS DCs

DORIS Weekly Solutions - IDS Combination Center

Series: ids19wd09 - Station: REZB (Reykjavik)



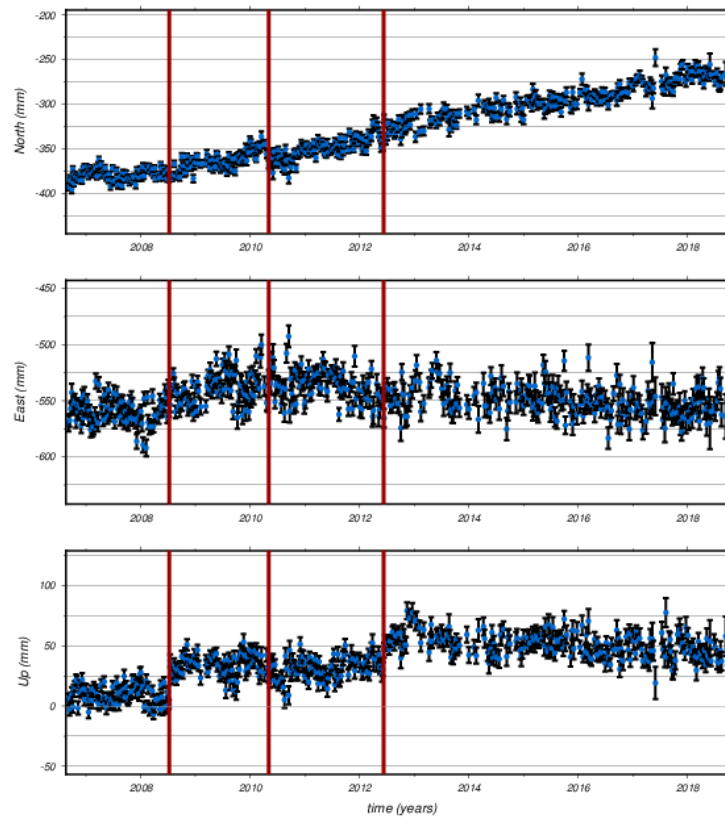
2019 Sep 10 09:29:57 ids19wd09.stcd.rezb.gif

## Event History-Discontinuity Legend

- 2005/03/14 - Unknown in East & North
- 2008/05/29 - Earthquake M6.3 Iceland (46km)
- 2012/05/29 - Beacon change

DORIS Weekly Solutions - IDS Combination Center

Series: ids19wd09 - Station: ARFB (Arequipa)



2019 Sep 10 09:23:08 ids19wd09.stcd.arfb.gif

## Event History-Discontinuity Legend

- 2008/07/08 - Earthquake M6.2 southern Peru (60km)
- 2010/05/06 - Earthquake M6.2 near the coast of Tarapaca Chile (204km)
- 2012/06/07 - Earthquake M6.1 southern Peru (118km)