

IDS news

Outline

- Data/products
- IDS life: latest news
- Website/Webservice
- Reports
- Newsletters

- Dissemination of **Sentinel-3B** files will start soon (information will be e-DORISmail-ed)

IDS Data Centers (CCDIS and IGN)

- DORIS raw data (RINEX format) delivered on a daily basis (1-day latency),
- Precise Orbit files (in SP3 format): 9-day files, from June 6 (3-4 week latency)

IDS ftp server:

- Sentinel-3B macromodels (idem S3A, see document DORISSatelliteModels.pdf)
- mass & center of mass history file: s3bmass.txt
- manoeuver history file: s3bman.txt
- attitude history file: s3batt.txt

Find links on IDS web : **Home > IDS > Data & Products > Data structure and formats**

- New **GDR-F** orbit standards to come

(new parametrization, measurement and dynamic models)

CNES plans to applied this upgrade in 2018 to Sentinel-3B,
Sentinel-3A, Jason-3

- Corresponding version will be **11**:

ssa <sss>**11**.bXXDDD.eYYYYE.DG_.sp3.LLL.Z

Reminders:

- **DORIS/RINEX files are delivered with a latency of 1 day (instead of 3 days previously), and have been since January 2017.**
 - Diode time tagging
 - Corresponding version is **001** : <sss>rxYYDDD.**001**.Z
with <sss> = ja2 (Jason-2); ja3 (Jason-3); cs2: (CryoSat-2); srl (Saral); h2a (HY-2A); s3a (Sentinel-3A) and (soon) s3b (Sentinel-3B)
 - **During Jason-2's Safe Hold Mode periods (latest in Feb.):**
 - **Not delivered:** DORIS1B data and the DORIS orbits
 - **Delivered:** DORIS/RINEX data and solar panel / attitude quaternions files
- !! JASON-2 will be 10 on June 20 !!**

From the Combination Center :

- DPOD2014, version #2 , October 2017: dpod2014_02
- Cumulative solution, version #2, October 2017: ids17d02
and residuals (pdf file + webservice)

See dedicated pages on IDS web: [Home](#) > [Analysis coordination](#) > [Combination Center](#)

IDS Workshop 2018

Ponta Delgada (Azores Archipelago), Portugal, September 2018

Several events:

- 25 Years of Progress in Radar Altimetry Symposium: 24-26
- OSTST meeting : 27-28
- **IDS Workshop 24-25 + GB meeting 26 morning**

Logistical details are available on the meeting website www.altimetry2018.org

Important Deadline: **June 15, 2018** end of Early Registration
(350 Euros; regular registration is 450 Euros after this date)

See the page on IDS web:

Home > IDS > Reports & Mails > Meeting presentations > IDS Workshop 2018

2 positions to be renewed within the Governing Board for 2019-2022:

- **Analysis coordinator (currently a tandem: Hugues Capdeville & Jean-Michel Lemoine)**
- **Member-at-large (currently Marek Ziebart)**

July: election announcement

July – September: call for nomination

October: vote by the IDS Associates

January 2018: start of 4-yr term for the two new elected members

→ For further information, contact Hugues, Jean-Michel, Marek.

IDS Annual report 2017

The report is almost ready.


All contributions received before the end of April !

Only the cover is missing.

Thanks to all contributors for their effort!

https://ids-doris.org/documents/report/IDS_Report_2017.pdf





#4 November 2017

Users NEWSLETTER

Station re-location at Kitab (Uzbekistan) to get better visibility

Jérôme Saunier (IGN)

The good reception of DORIS signal requires an unobstructed path from the transmitting stations to the orbiting satellites. The visibility at the DORIS ground stations is a key element of how well they contribute to the precise orbit determination. The DORIS network performance is evaluated on an ongoing basis. A loss of performance for the DORIS station at Kitab has been observed for a number of years. The antenna environment has been getting progressively worse: nearby trees mask the view of the sky as seen from the DORIS antenna. It was decided in 2013 to re-locate the station to get better visibility.




The new DORIS antenna "KIVC" and the new GNSS antenna "KITG"

The DORIS station has been hosted at the Kitab observatory of the Ulugh Beg Astronomical Institute (see insert on page 3) since 1991. Originally installed on the roof of the main building, the DORIS station was moved in 2001 to a pillar to get better stability. But since then, the antenna environment has gradually deteriorated over the years causing disruption and loss of low-site measurements.

DORIS has been co-located with the GNSS station "KIT3", part of the IGS network, since 1994. During the reconnaissance, it was important to find a location close enough to the GNSS station in order to maintain a good co-location in the geodetic meaning of the term, but also sufficiently near the former DORIS location to be able to determine with high accuracy the tie vector between the two antenna reference points and thus allow the connection of the time series of station positions.

The new site is located at around 200 m southeast of the GNSS station that allows the carrying out of a high precision local tie survey. The relatively open ground offers a good antenna environment.



IDS Newsletter #4 Page 1

#4 November 2017

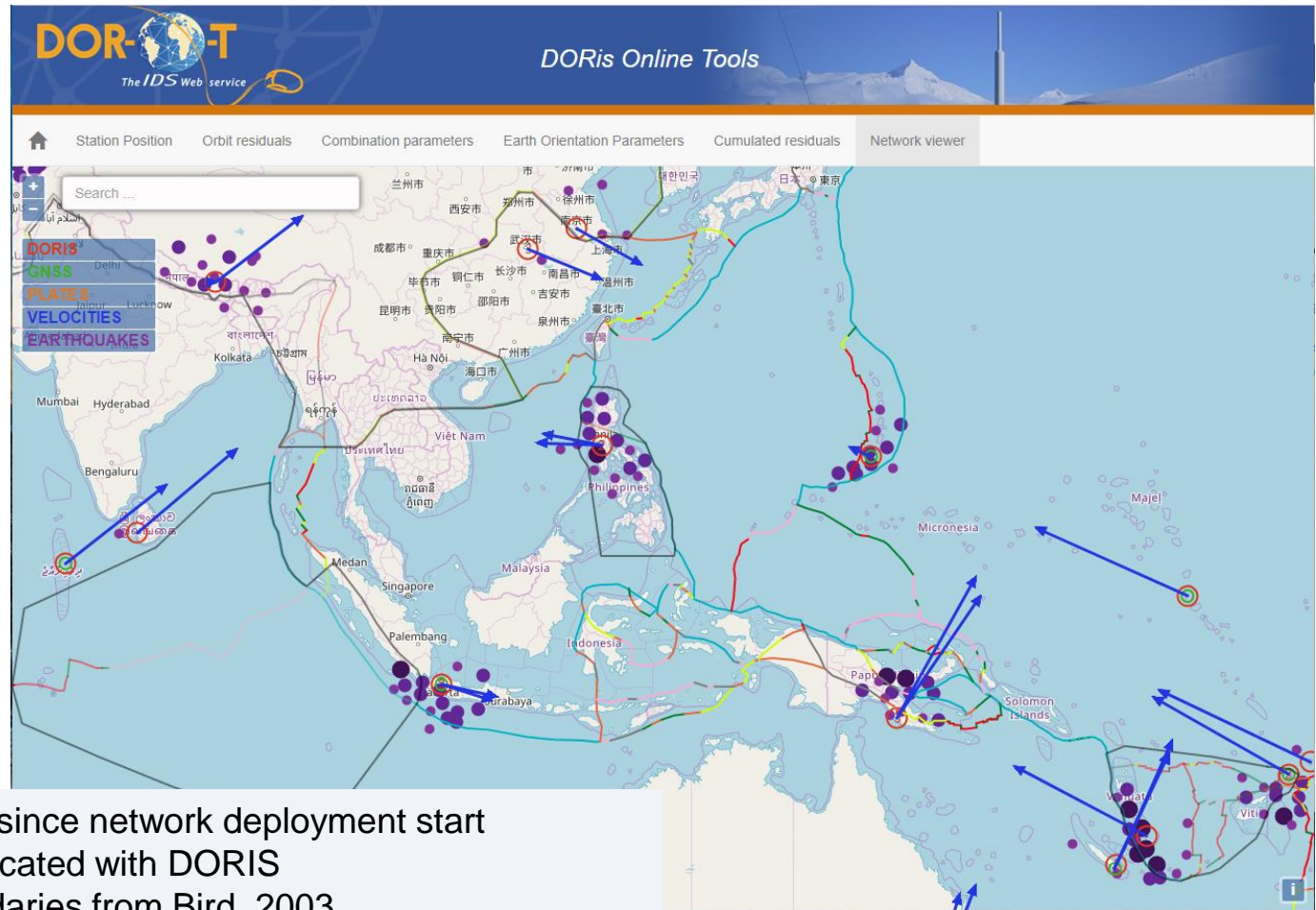
- Station re-location at Kitab (Uzbekistan) to get better visibility (*J. Saunier, IGN*)
- Kitab: the host agency in short (*D. Fazilova and S. Ehgamberdiev, UBAI*)
- DPOD2014: a new DORIS extension of ITRF2014 for Precise Orbit Determination (*G. Moreaux, CLS*)
- IDS life

#5 this summer

If you want to contribute, contact the Central Bureau. to ids.central.bureau@ids-doris.org

If you want to subscribe to the newsletter, please send an e-mail to ids.central.bureau@ids-doris.org, with "Subscribe Newsletter" in the subject.

Upgrade of the network viewer



DORIS: DORIS sites since network deployment start

GNSS: IGS sites colocated with DORIS

PLATES: Plate boundaries from Bird, 2003

VELOCITIES: Velocity vectors from DPOD2014 solution

EARTHQUAKES: Earthquakes with a magnitude ≥ 6
around DORIS stations (USGS source)

<https://ids-doris.org/webservice>



From the network viewer



Site logs
 EVEB20130129.LOG (current; see below)
 EVEB20120202.LOG
 EVEB200812.LOG
 EVEB200707.LOG
 EVEB200701.LOG
 EVEB200507.LOG
 EVEB200405.LOG

Other pictures
 EVEB-2.jpg
 EVEB.jpg
 EVEB-1.jpg

Plots
 Time series of coordinates
 CHES POD MOE statistics
 CHES POD POE statistics



Site news
 Doris mails
 No 0790 ITRF2008-OPD2008 coordinates for all DORIS

Local events		
Date	Acronym	Information provided
2015/05/12	EVEB	Earthquake of magnitude 6.3 distance: 73km
2015/05/12	EVEB	Earthquake of magnitude 7.4 distance: 66km
2015/04/26	EVEB	Earthquake of magnitude 6.7 distance: 85km
2015/04/25	EVEB	Earthquake of magnitude 6.6 distance: 193km
2015/04/26	FVFR	Earthquake of magnitude 7.0 distance: 708km

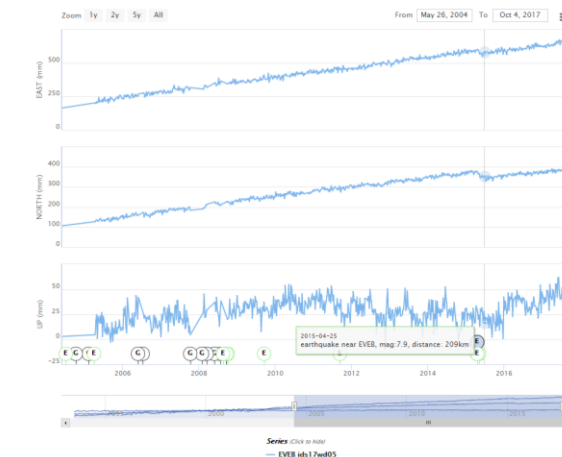
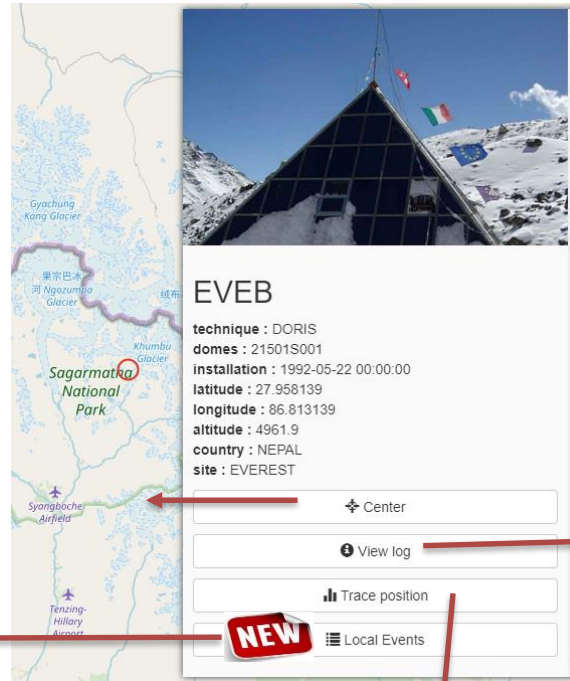
EVEREST DORIS site description form

0. Form

Prepared by : SIMB (DORIS installation and maintenance department)
 Date prepared : 29/01/2013
 Report type : UPDATE

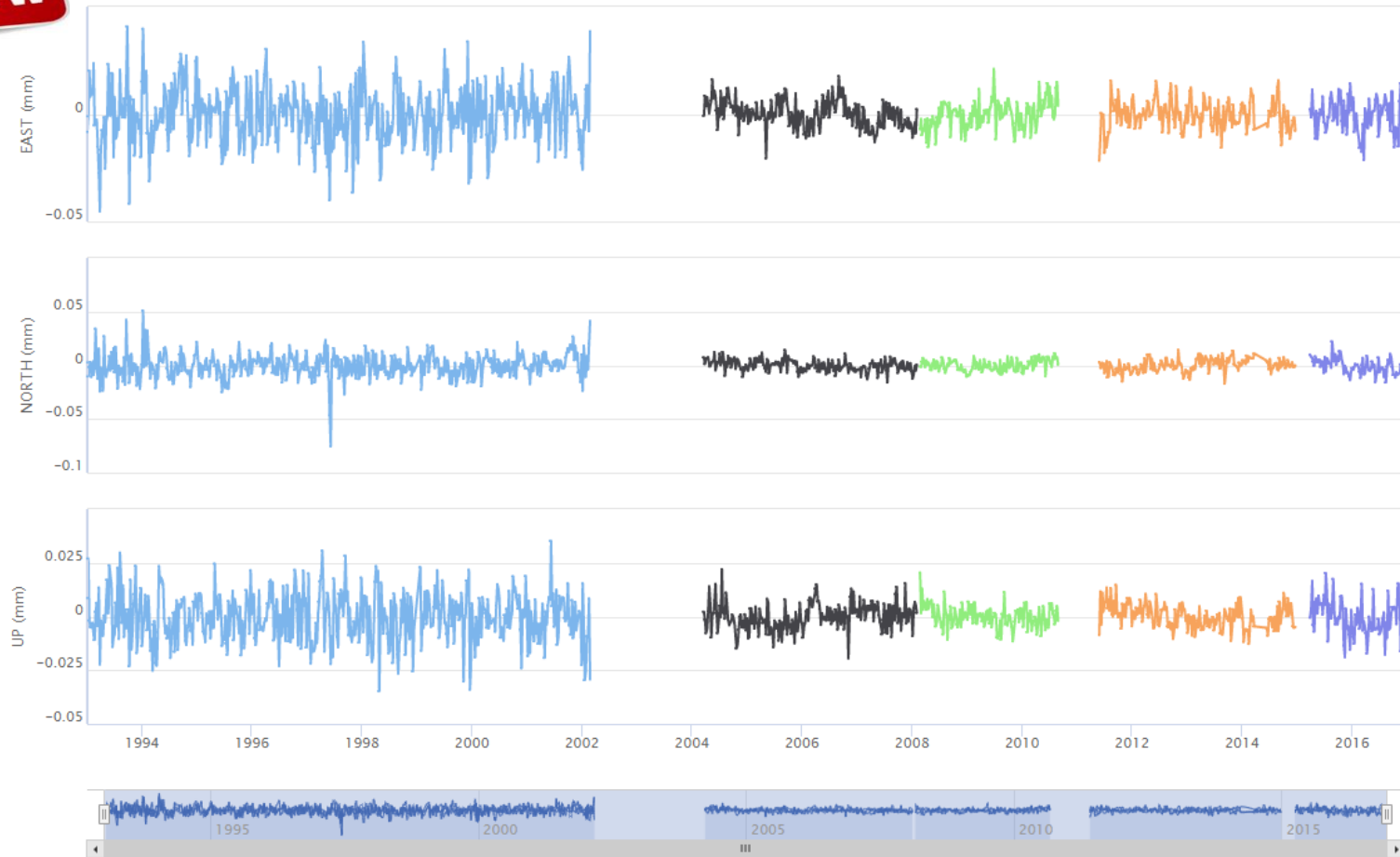
1. Site location information

Site name : EVEREST
 Site DOMES number : 21501
 Host agency : EV-K2-CNR Committee
 City : Near the Everest base camp
 State or province :
 Country : NEPAL
 Tectonic plate : EURA
 Geological information :



NEW Local Events	
Date	1993/03/20
Information	Earthquake of magnitude:6.2 distance:134km
Date	2002/03/16
Information	discontinuity in position
Date	2004/07/11
Information	Earthquake of magnitude:6.2 distance:430km
Date	2004/10/13
Information	Lack of data START
Date	2005/02/14
Information	Lack of data END

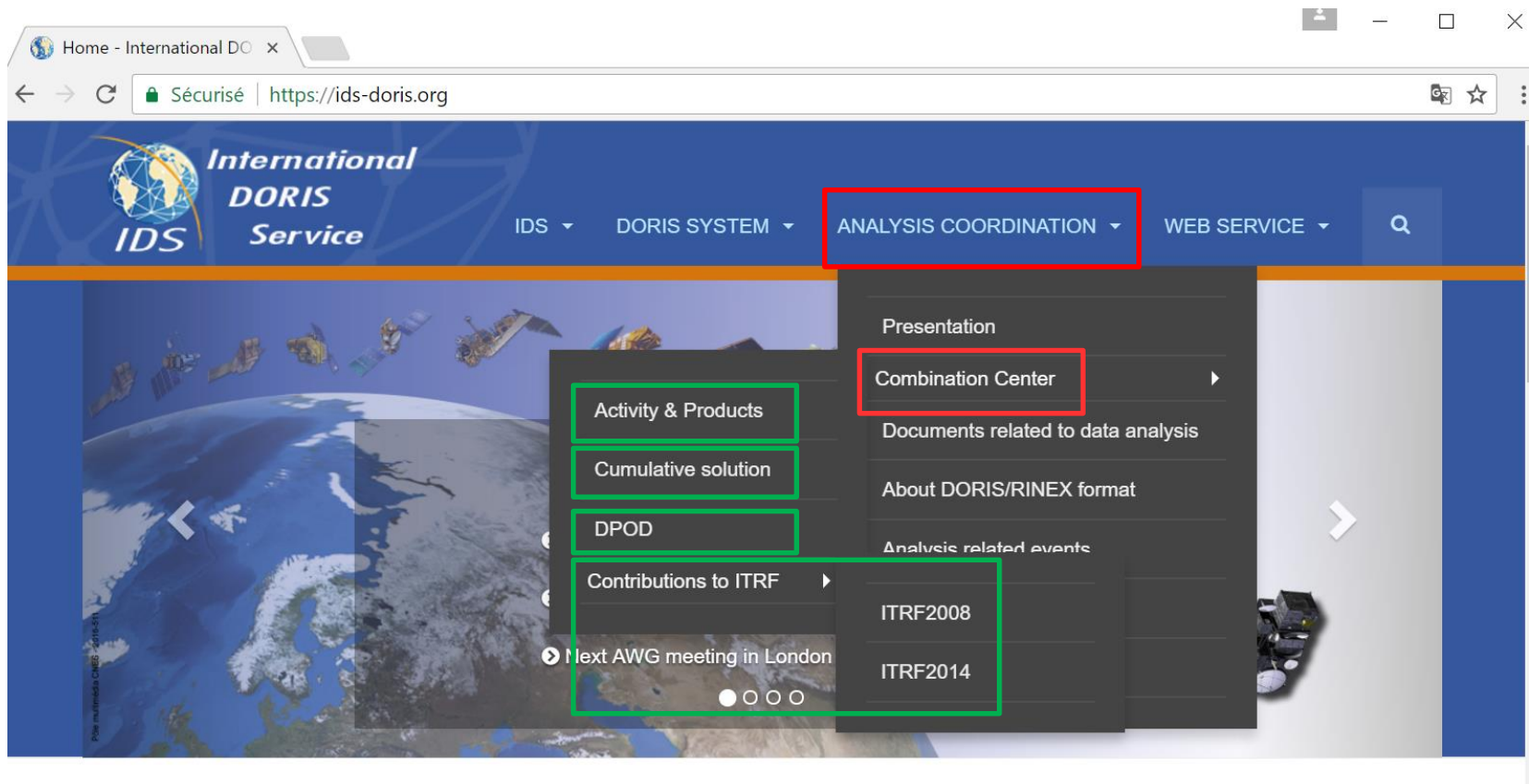
A new plottool for position residuals



Series (Click to hide)

— ADEA ids17wd12 — ADEB ids17wd12 — ADFB ids17wd12 — ADGB ids17wd12 — ADHC ids17wd12

IDS web site new section « **Combination Center** »

A screenshot of the IDS web site interface. The browser window shows the URL 'https://ids-doris.org'. The main navigation bar includes 'IDS', 'DORIS SYSTEM', 'ANALYSIS COORDINATION', and 'WEB SERVICE'. The 'ANALYSIS COORDINATION' menu is expanded, revealing a 'Combination Center' sub-menu. The 'Combination Center' sub-menu is further expanded, showing options like 'Presentation', 'Documents related to data analysis', 'About DORIS/RINEX format', and 'Analysis related events'. The 'Analysis related events' sub-menu is also expanded, showing 'ITRF2008' and 'ITRF2014'. The background of the website features a satellite image of Earth with several satellites in orbit.

Home - International DO x

Sécurisé | https://ids-doris.org

International
DORIS
Service

IDS ▾ DORIS SYSTEM ▾ ANALYSIS COORDINATION ▾ WEB SERVICE ▾

Activity & Products

Cumulative solution

DPOD

Contributions to ITRF ▸

Next AWG meeting in London

Presentation

Combination Center ▸

Documents related to data analysis

About DORIS/RINEX format

Analysis related events

ITRF2008

ITRF2014

IDS data structure and formats

Microsoft Word - DataStructure20180529
1 / 24

↺
⬇
🖨

IDS data structure and formats

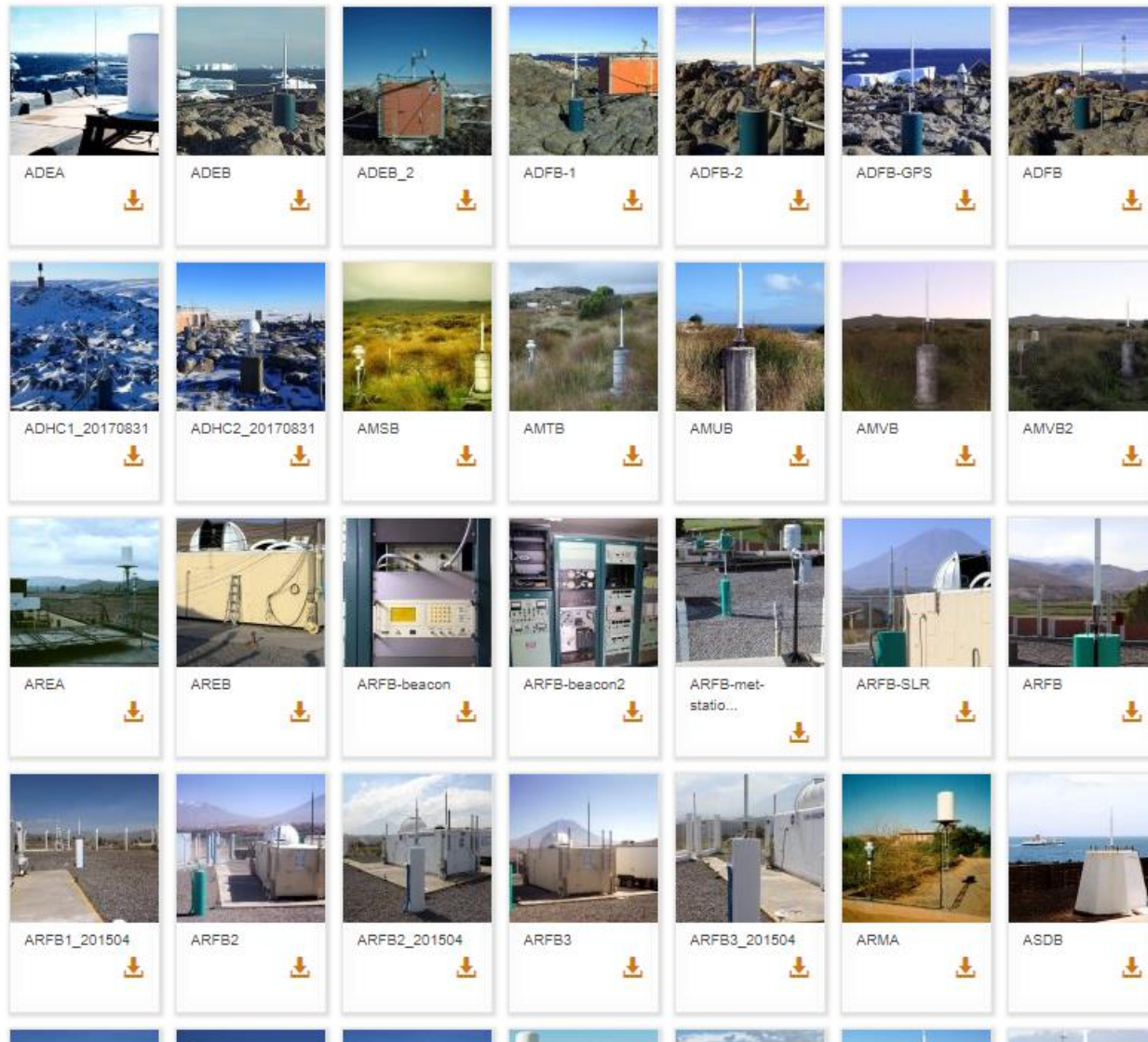
First version: 2004-02-19
 Previous versions: 2004-07-06, 2007-09-19, 2009-02-11, 2010-05-10, 2016-11-29, 2017-11-29
(complete review of the document)
 Current version: 2018-05-29

2018-05-29: add Sentinel-3B

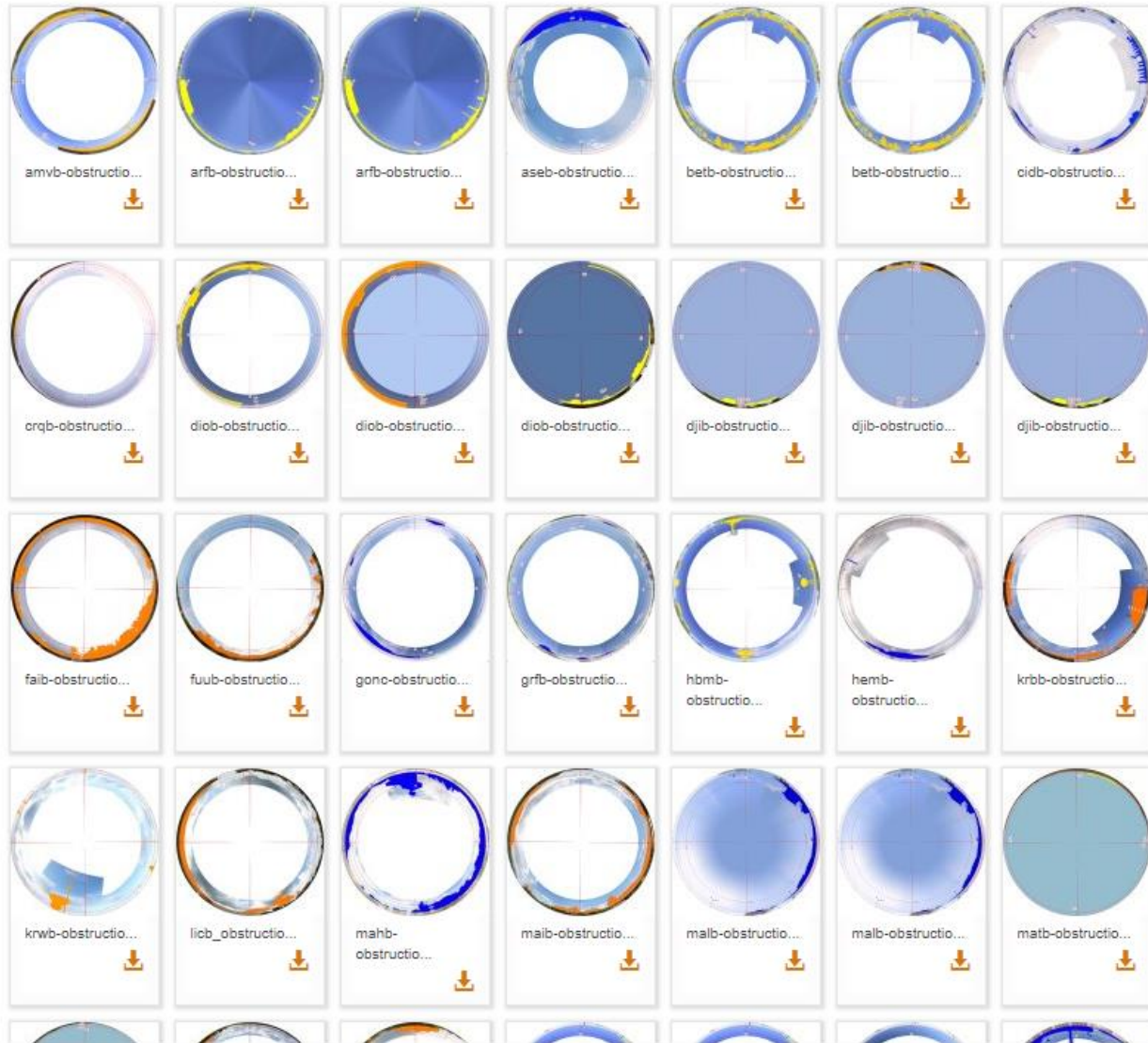
Content

IDS data structure and formats.....	1
0. What kind of information may be found on which center?.....	2
1. File naming conventions.....	3
1.1 Data	3
1.1.1 Preprocessed data	3
1.1.2 Raw data (RINEX/DORIS files).....	4
1.1.3 Quaternions data files	4
1.1.4 Information on data	4
1.2 Products.....	5
1.2.1 Orbits	5
1.2.2 Global Sinex solutions (cf IERS naming convention)	6
1.2.3 DPOD solutions.....	6

↑ Stations



↑ Stations



All the presentations of the AWG meeting will be available on IDS web:

[Home > IDS > Reports & Mails > Meeting presentations > IDS AWG 06- 2018](#)

THANK YOU