



Status of the Routine Combination

Guilhem Moreaux



<http://ids-doris.org>

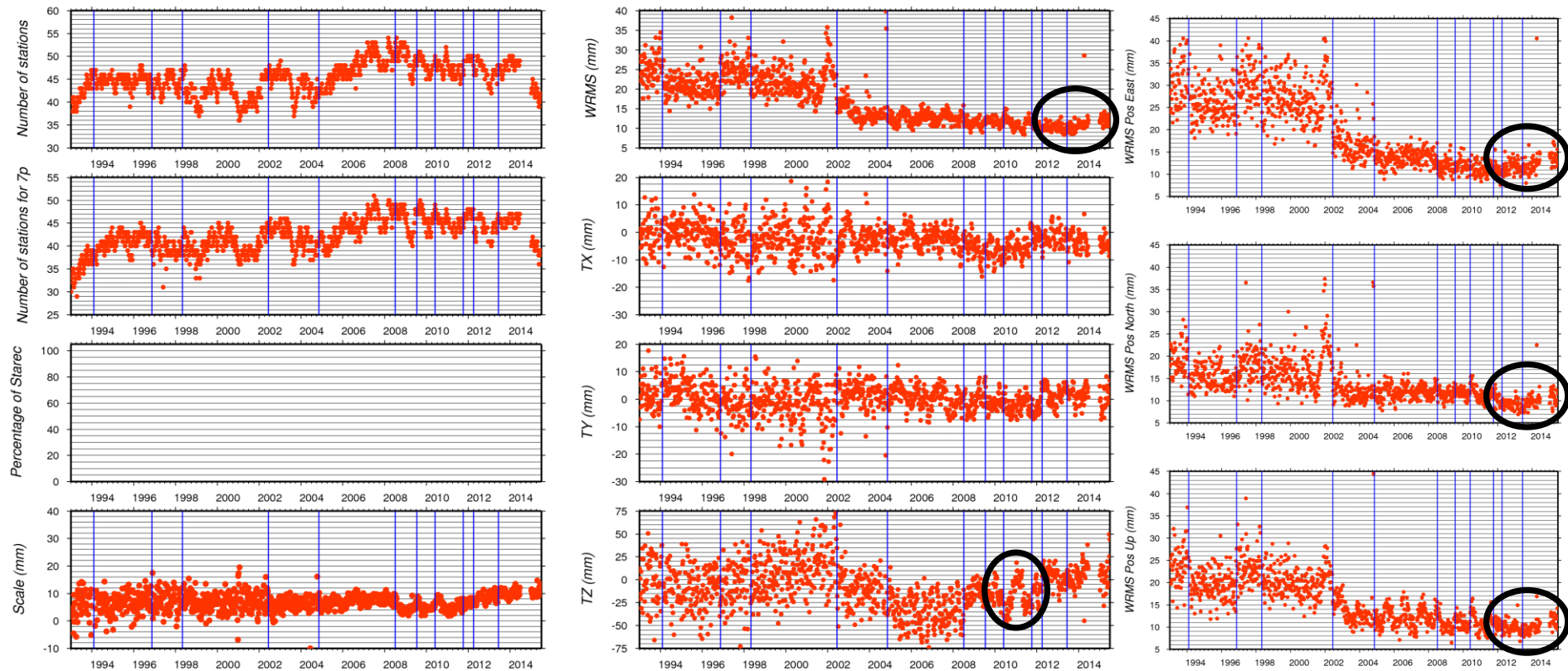
Series Available

Page 2

- On October 14th from CDDIS

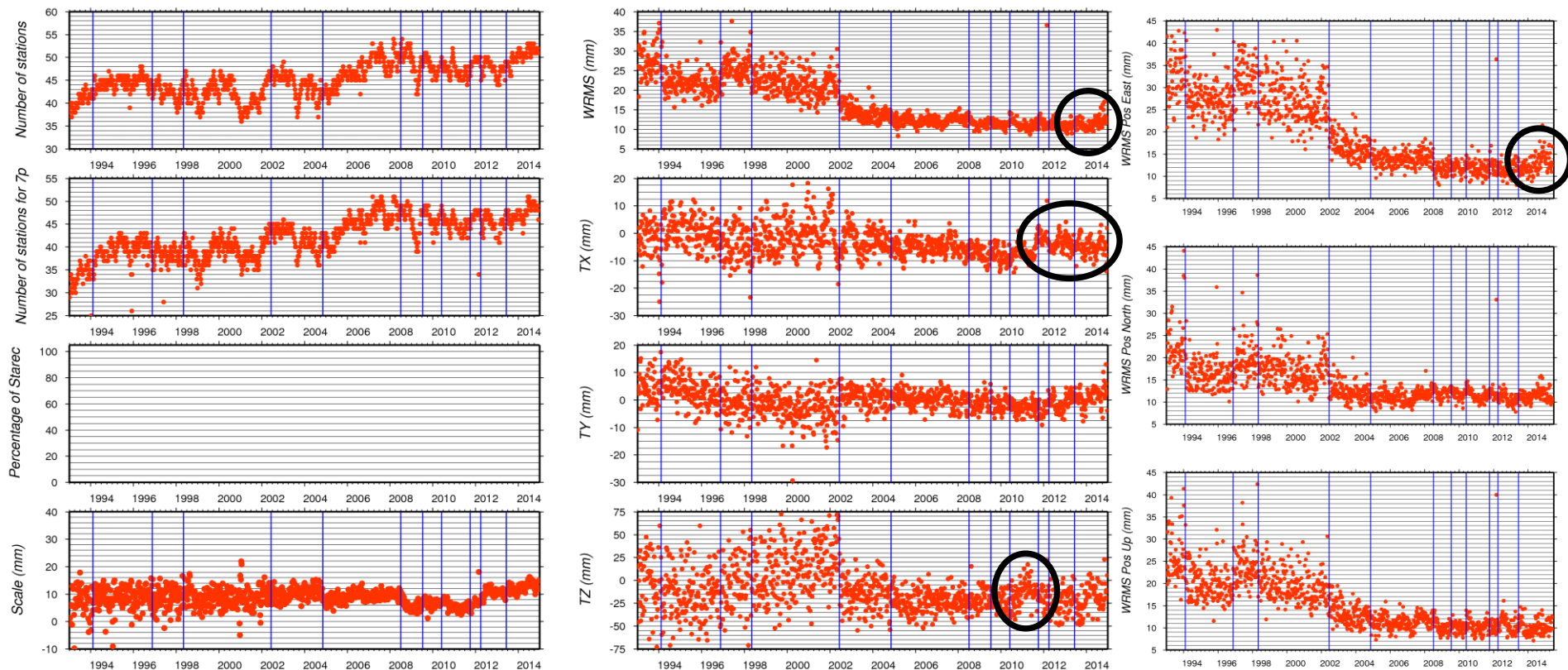
	Contribution to IDS 09 (ITRF2014)		Extension		Saral
ESA	10	1993 doy 003 2014 doy 181	10	2015 doy 004 2015 doy 179	No
GOP	43	1993 doy 003 2013 doy 363	43	2014 doy 362 2015 doy 158	Yes
	46	2014 doy 005 2014 doy 355			
GRG	40	1993 doy 003 2015 doy 355	40	2014 doy 362 2015 doy 151	Yes
GSC	26	1993 doy 003 2014 doy 362		2015 doy 004 2015 doy 088	No
IGN	15	1993 doy 003 2014 doy 355	15	2015 doy 362 2015 doy 158	Yes
INA	08	1993 doy 003 2014 doy 362	10		

- **GOP 46 = GOP 43 – HY-2A – Saral**
- **INA 10 = INA 08 + HY-2A + Saral + phase laws**
- **Evaluation wrt ITRF2014P with not use of Post-Seismic Deformation corrections.**
- **GOP new SINEXs could not be evaluated due to later arrival.**

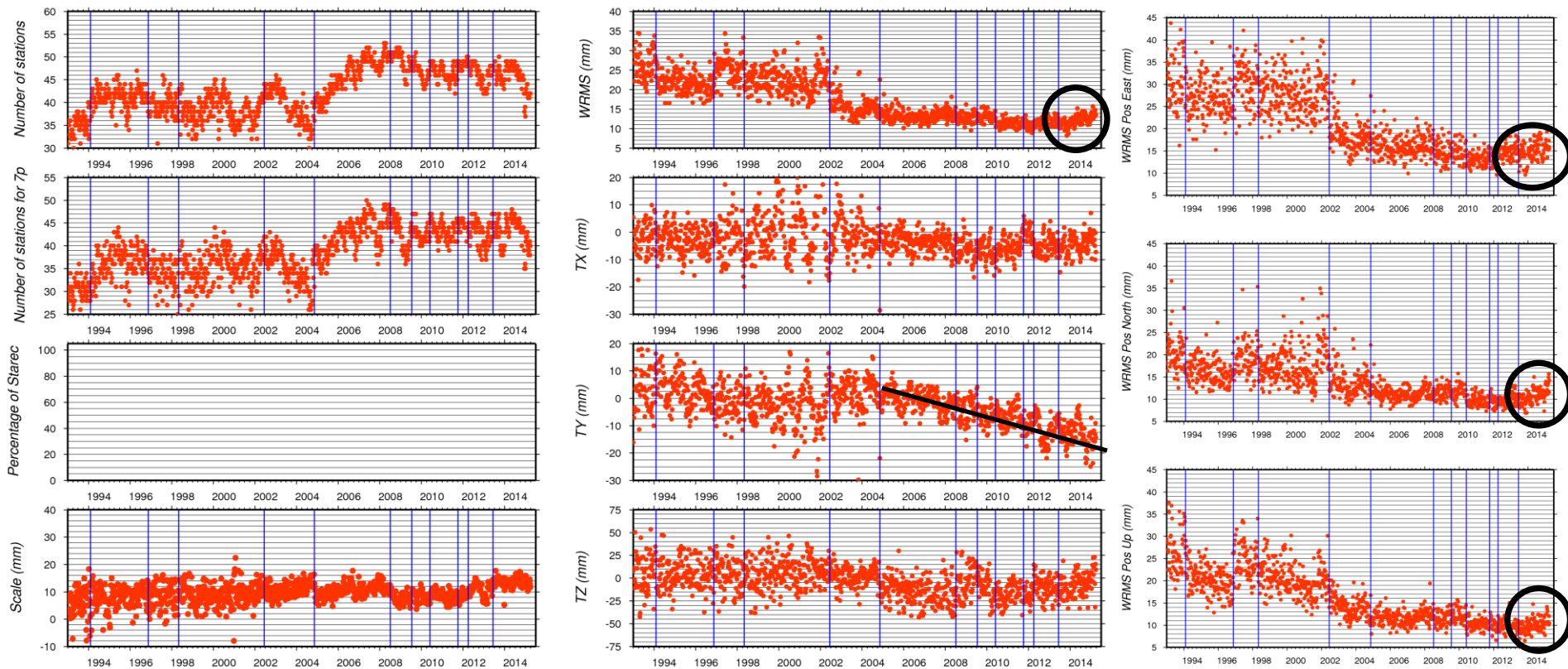


- Tz: 2011 peak is linked to the solar activity.
- WRMS: degradation in all the directions since end of SPOT4.

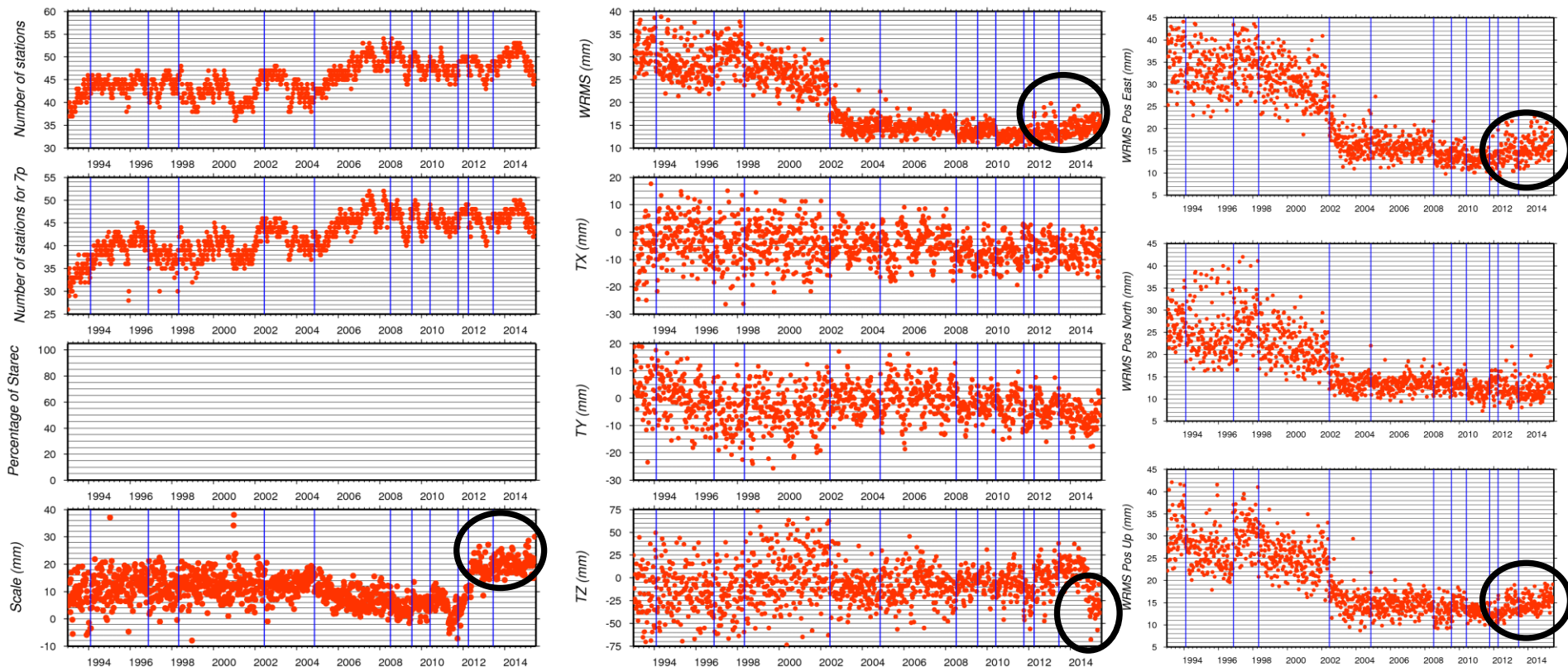
GRG 10 wrt ITRF2014P



- Tx: discontinuity while Saral is added.
- Tz: 2011 peak is linked to the solar activity.
- WRMS: degradation in the East direction since last quarter of 2014.



- Ty: negative linear trend since end of TOPEX.
- WRMS:
 - degradation in North and Up since end of SPOT4 or late 2013.
 - degradation in East since end of Envisat.



- Scale: higher increase early 2012.
- Tz: discontinuity late 2014 – early 2015.
- WRMS:
 - degradation in Up mid 2012 – Scale consequence ?
 - degradation in East since end of Envisat.

- Evaluation be will redone using PSD corrections and wrt IDS 09 cumulative solution.
- IDS CC will start the extension of combined series from 2014 doy 362 to 2015 doy 151/158 on October 26th.
- From these SINEX, IDS CC plans to compute its first DPOD solution including stations with C-beacons: ADHC, GONC, KEUC, OWEC, PDNC, and ROWC.
- The DPOD will not contain Post-Seismic Deformation correction !!!