

gscwd10
Single Satellite
Tx, Ty, Tz, Scale
wrt DPOD2005

D. Chinn¹, K. Le Bail², F. Lemoine³

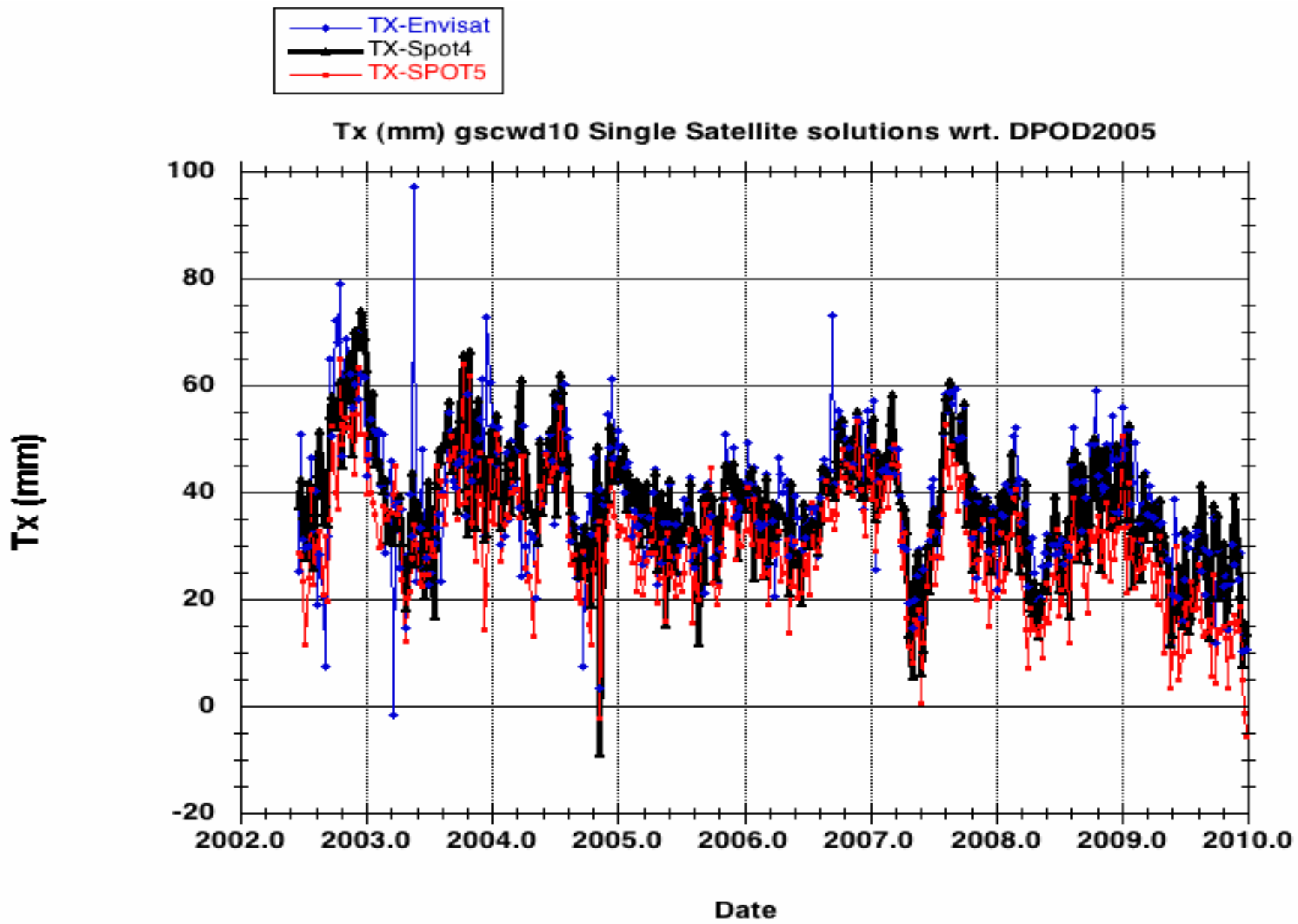
¹ SGT Inc., Greenbelt, Maryland, USA

² NVI Inc., Greenbelt, Maryland, USA

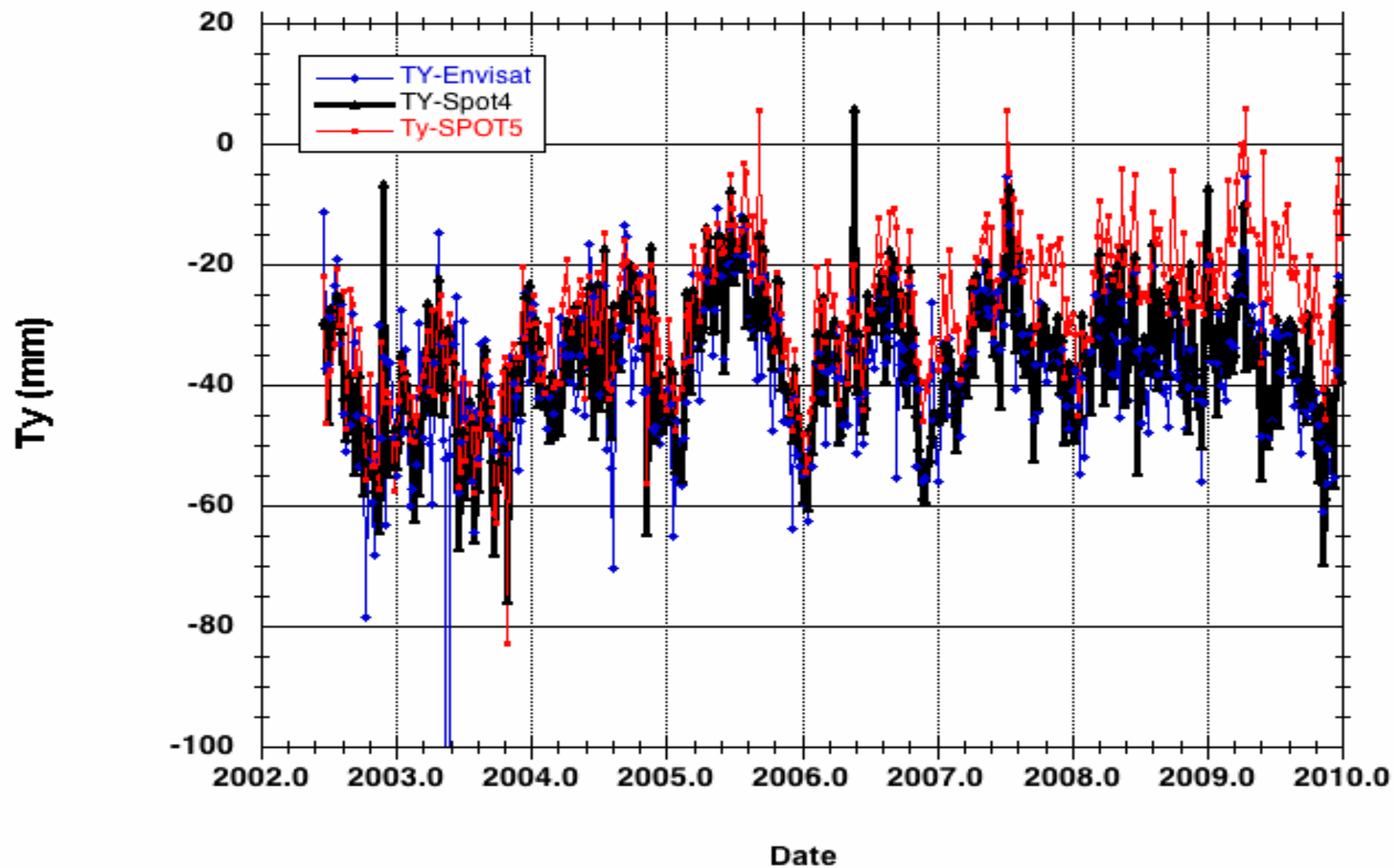
³ NASA GSFC, Greenbelt, Maryland, USA

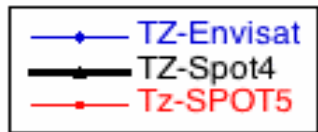
Methodology

- ITRF2008 normal equations (wd10 processing).
- Perform weekly single-satellite solutions with constraint ??? (what constraint)???
- Compare to DPOD2005 (reference stations??? Or Entire Set???)

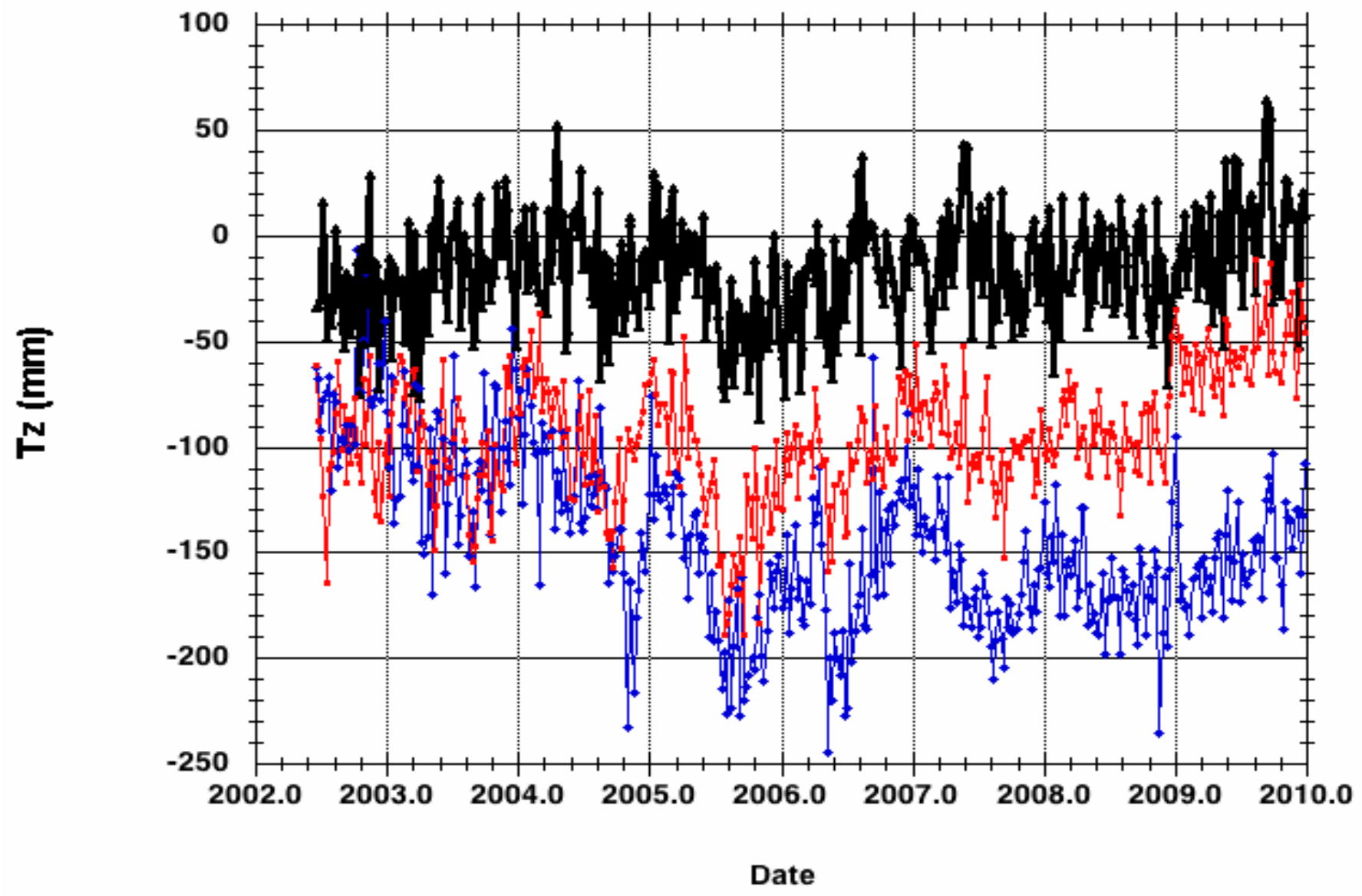


Ty (mm) gscwd10 Single Satellite solutions wrt. DPOD2005

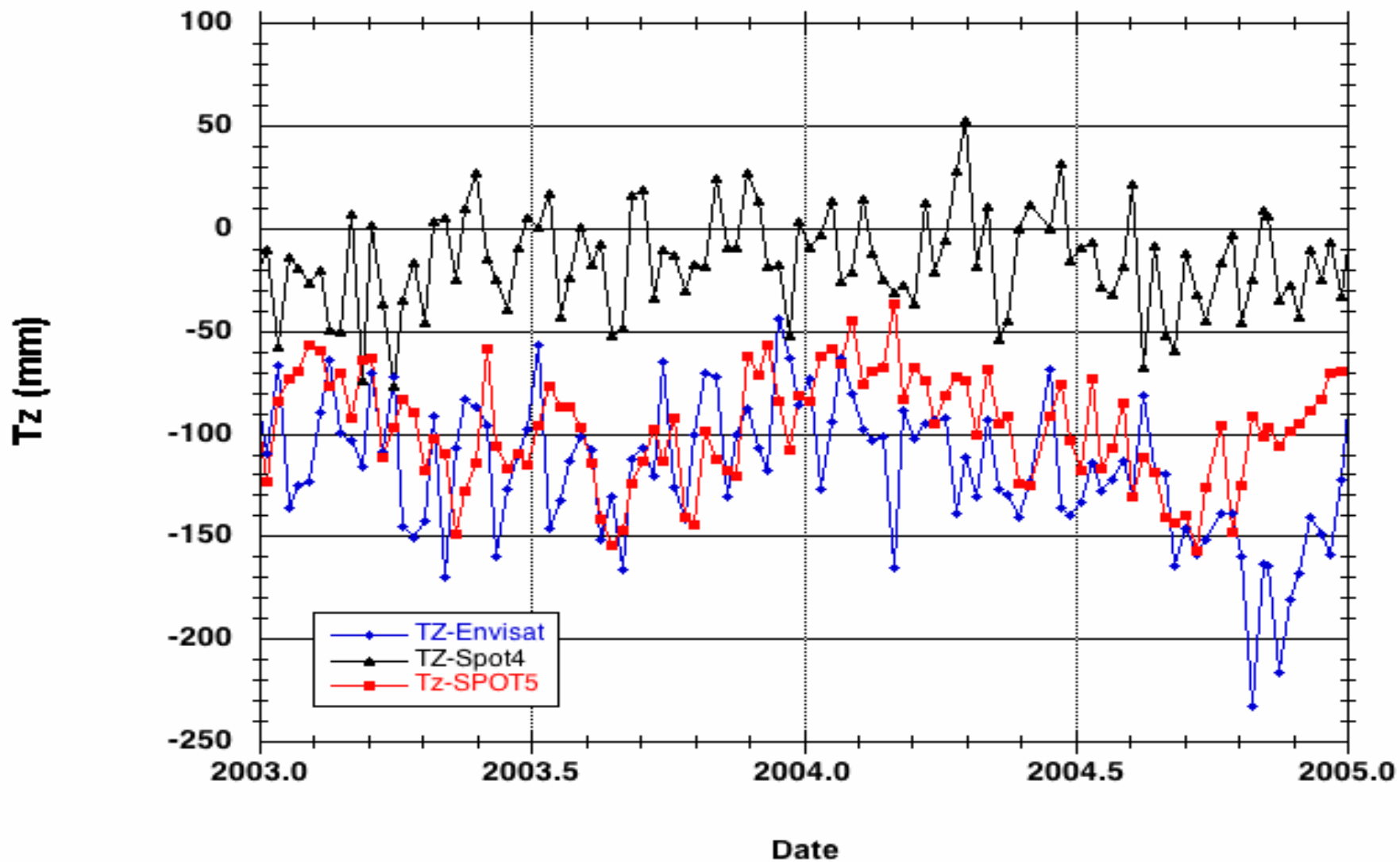




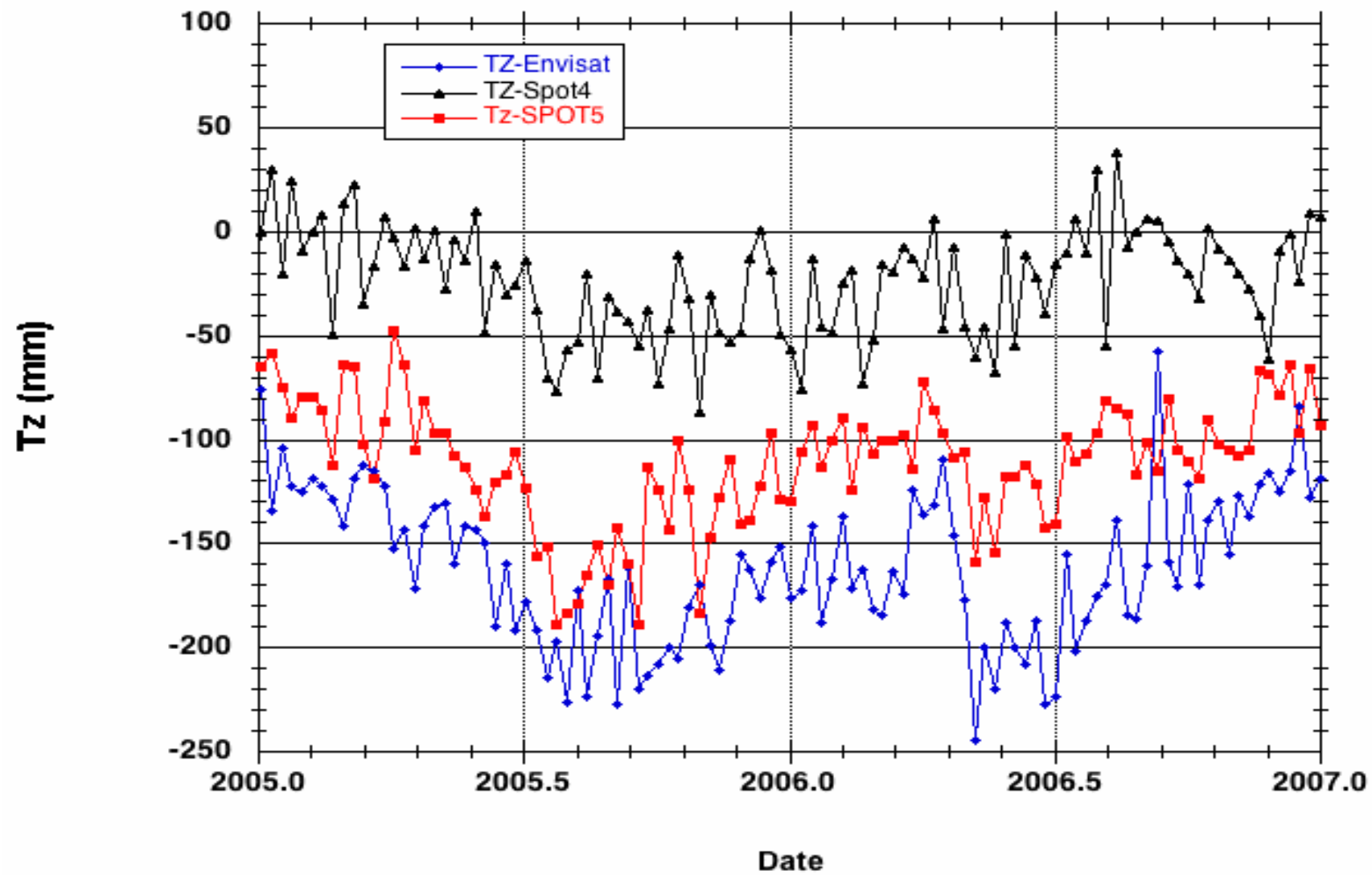
Tz (mm) gscwd10 Single Satellite solutions wrt. DPOD2005



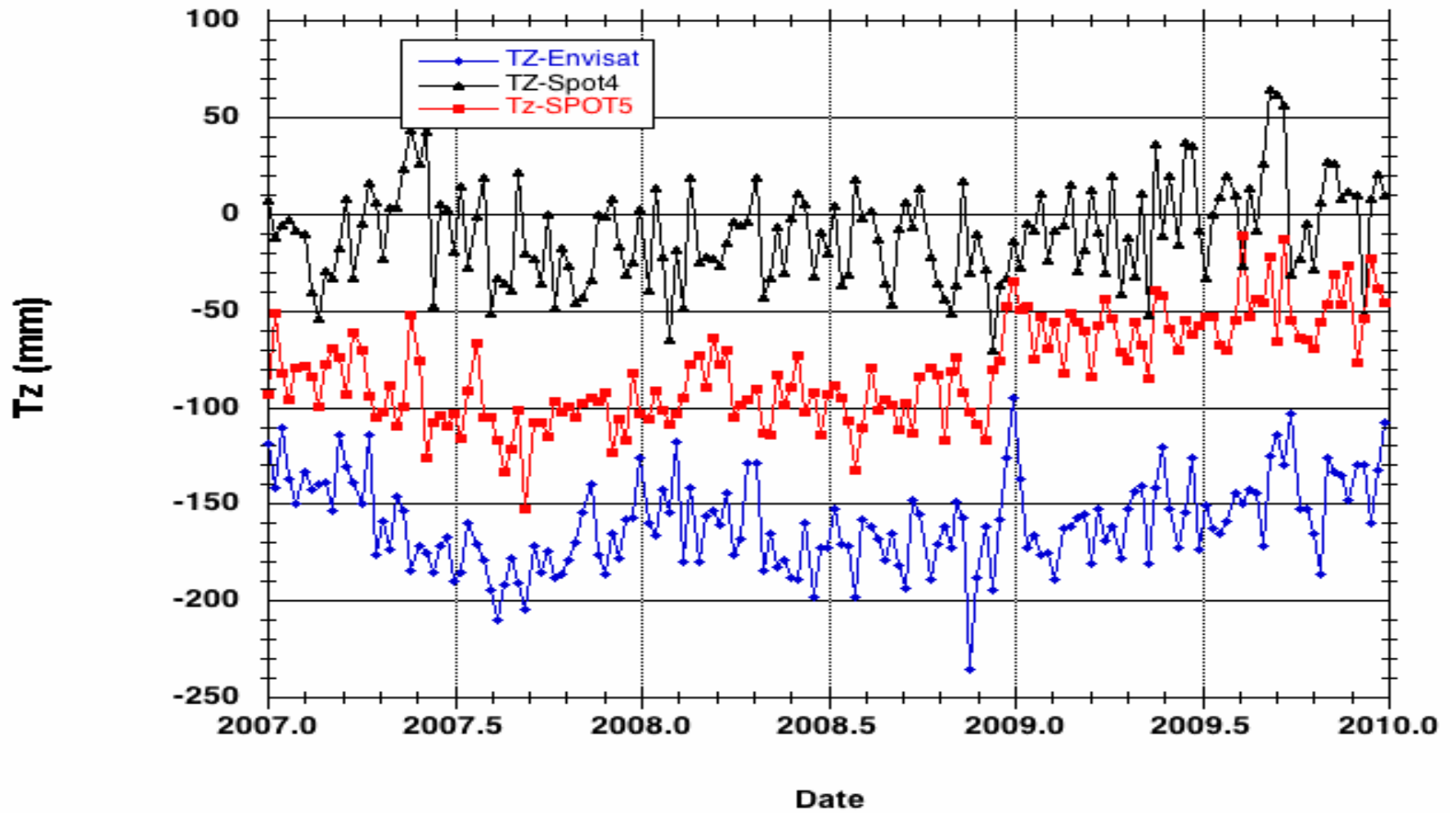
Tz (mm) gscwd10 Single Satellite solutions wrt. DPOD2005



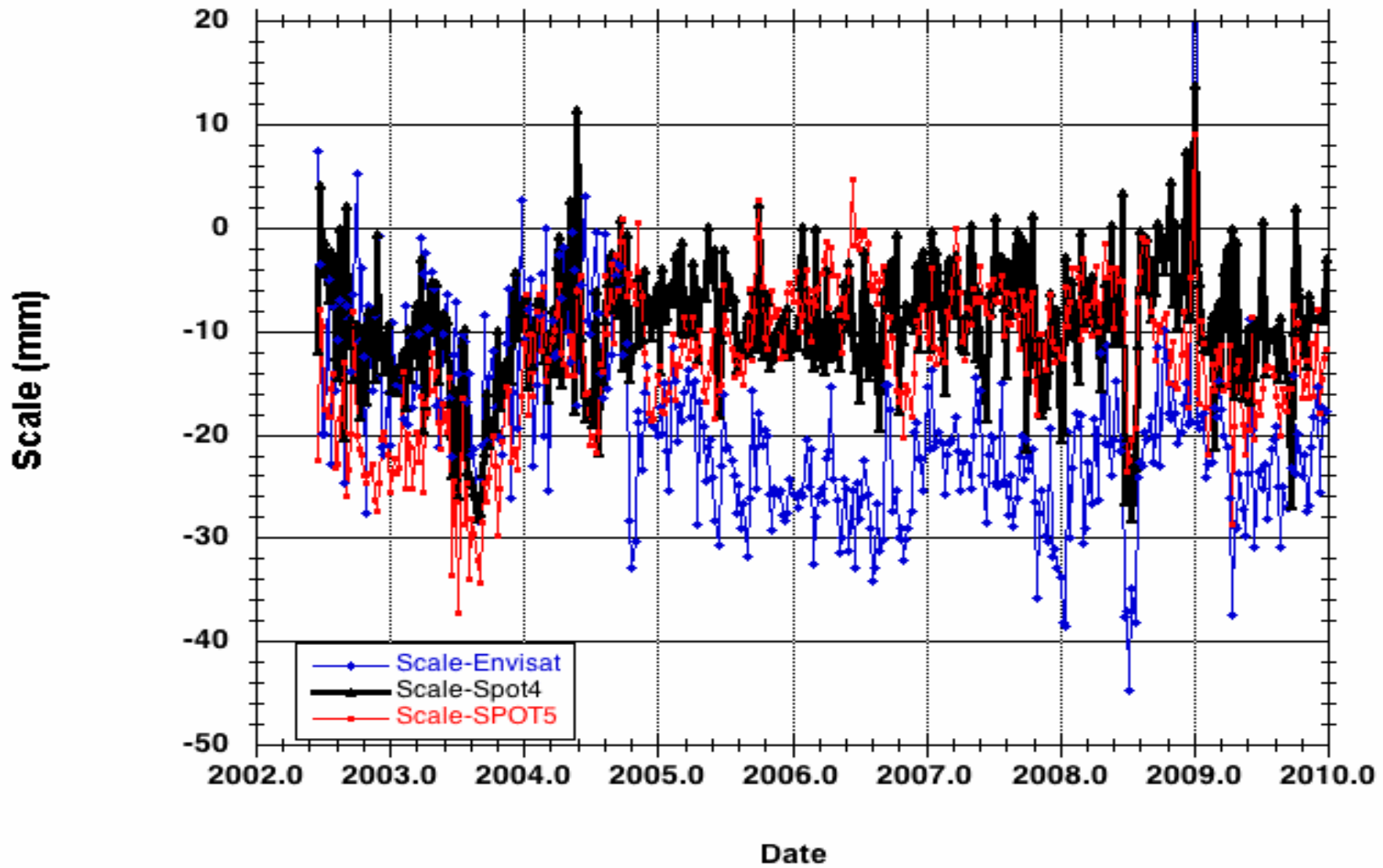
Tz (mm) gscwd10 Single Satellite solutions wrt. DPOD2005



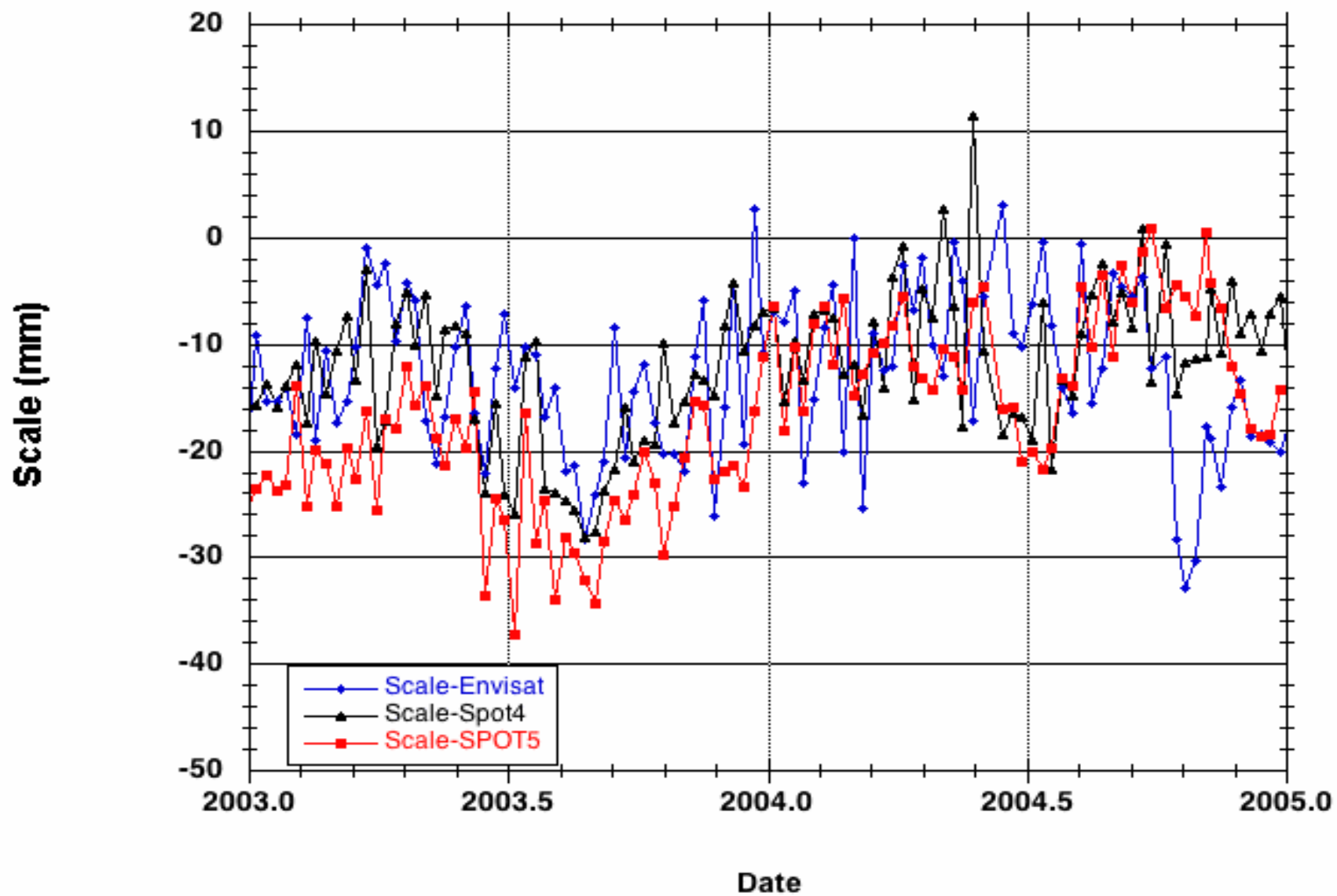
Tz (mm) gscwd10 Single Satellite solutions wrt. DPOD2005



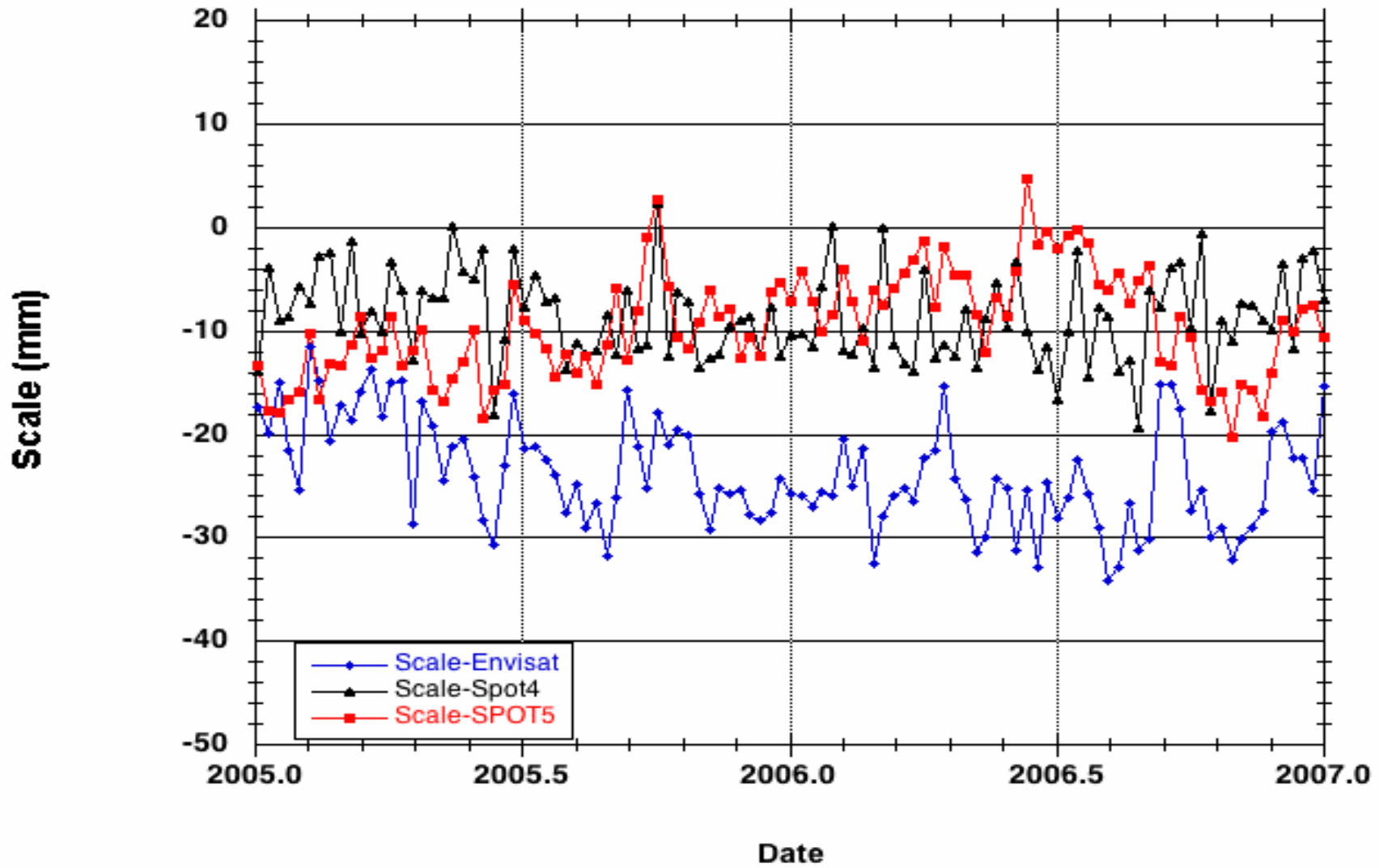
Scale (mm) gscwd10 Single Satellite solutions wrt. DPOD2005



Scale (mm) gscwd10 Single Satellite solutions wrt. DPOD2005



Scale (mm) gscwd10 Single Satellite solutions wrt. DPOD2005



Scale (mm) gscwd10 Single Satellite solutions wrt. DPOD2005

