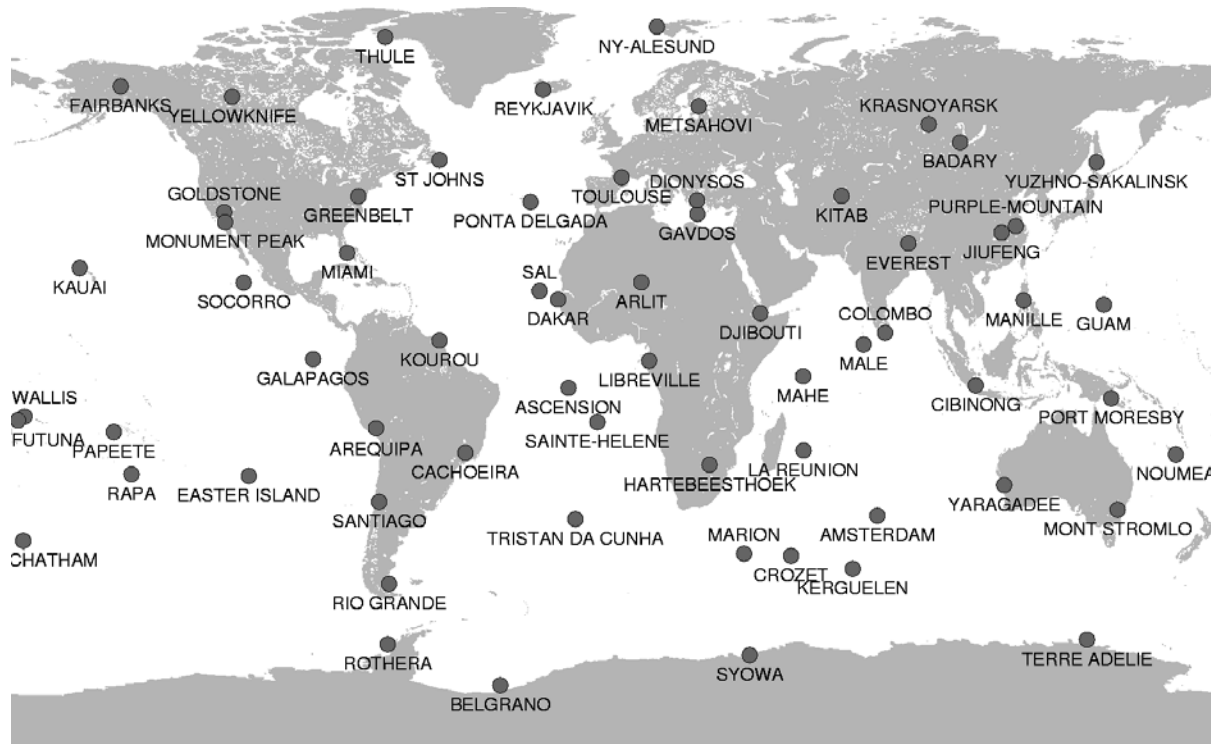


# IDS latest developments and perspectives

Pascal Willis, Frank Lemoine

# DORIS network for ITRF2008



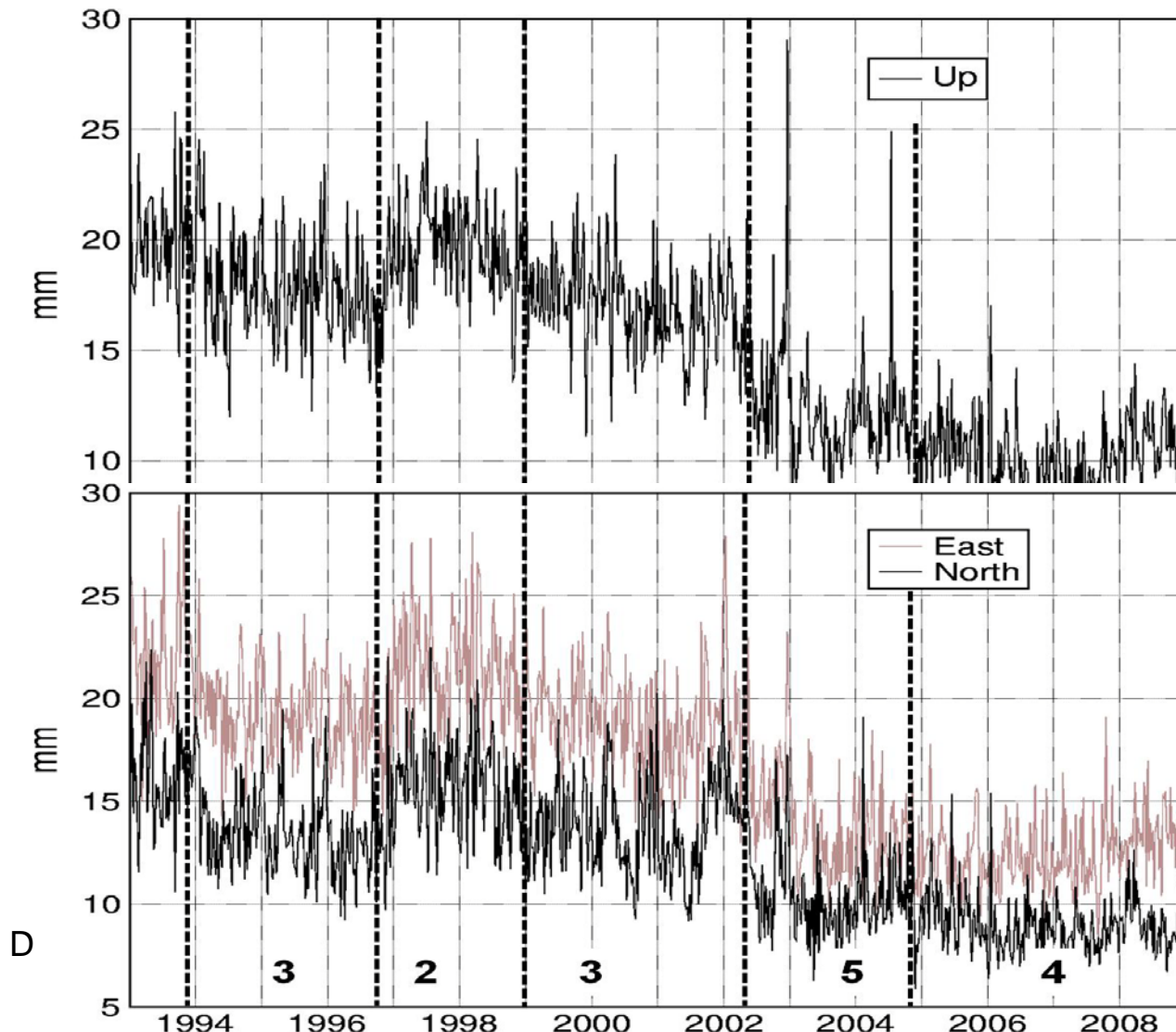
1993.0-2009.0

# IDS ACs contribution to IDS-3 (used for ITRF2008)

IDS AC	Country	Sotware	Data for ITRF2008
ESA	Germany	NAPEOS	1993.0-2009.0
Geoscience Australia	Australia	GEODYN	2002.1-2009.0
CNES/CLS	France	GINs/DYNAMO	1993.0-2009.0
GOP	Czech Rep.	Bernese	1993.0-2008.0
GSFC	USA	GEODYN	1992.8-2008.9
IGN	France	GIPSY/OASIS	1993.0-2009.0
INASAN	Russia	GIPSY/OASIS	1997.0-2008.8

# Station coordinates

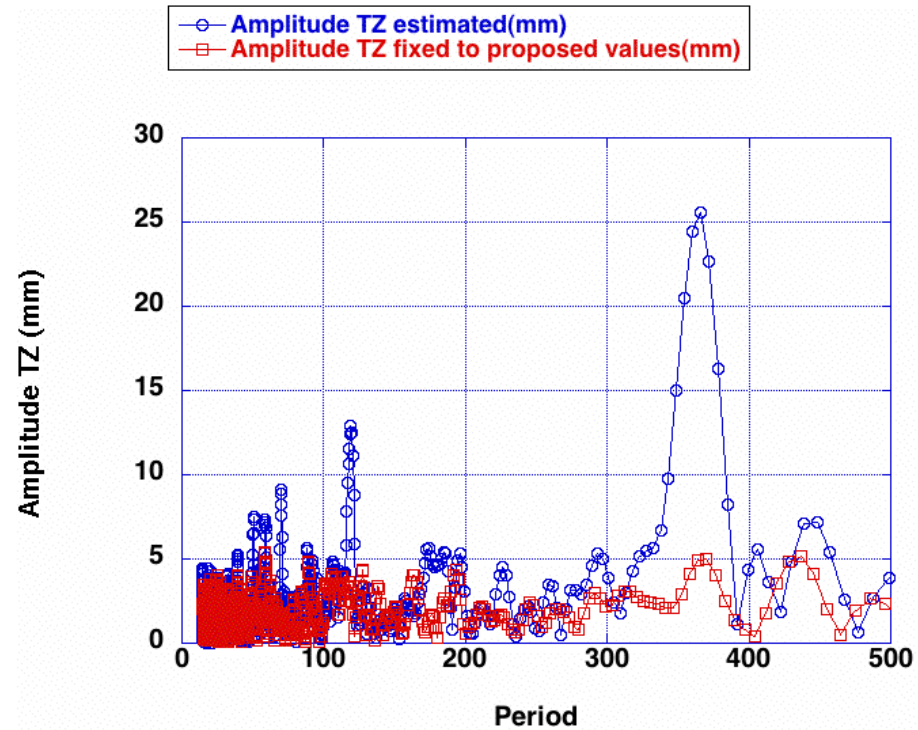
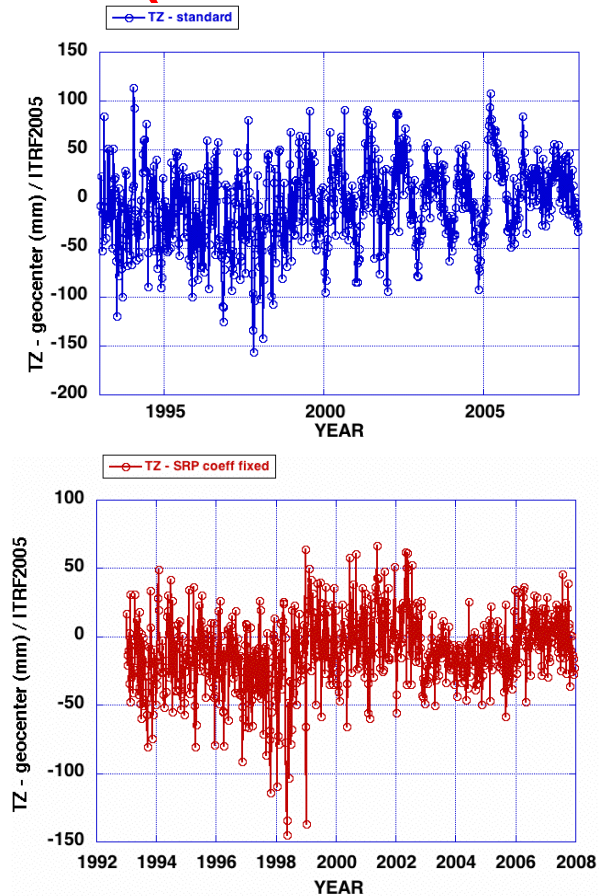
## Internal agreement (IDS-3)



Valette et al.,  
submitted

San Francisco, USA

# Recent developments (solar radiation pressure)



Gobinddass et al., 2009

# Open issues

- 11-year signal in TZ-geocenter (ionosphere, drag?)  
(Valette et al., ...submitted)
- use of Jason-2 raw phase and pseudorange (RINEX format)  
(Mercier et al., submitted)
- SAA effect detected on SPOT-5 oscillator  
(Stepanek et al., submitted)
- Dependency on station residual on solar flux  
(Valette et al., Gobinddass et al., submitted)

# Conclusions

- Currently 7 IDS Acs (5 software packages)
- Improved data processing
  - Solar radiation pressure
  - Atmospheric drag (geomagnetic storms + 11 cycle max)
- Better results
  - Geocenter (mostly TZ)
  - Station coordinates