

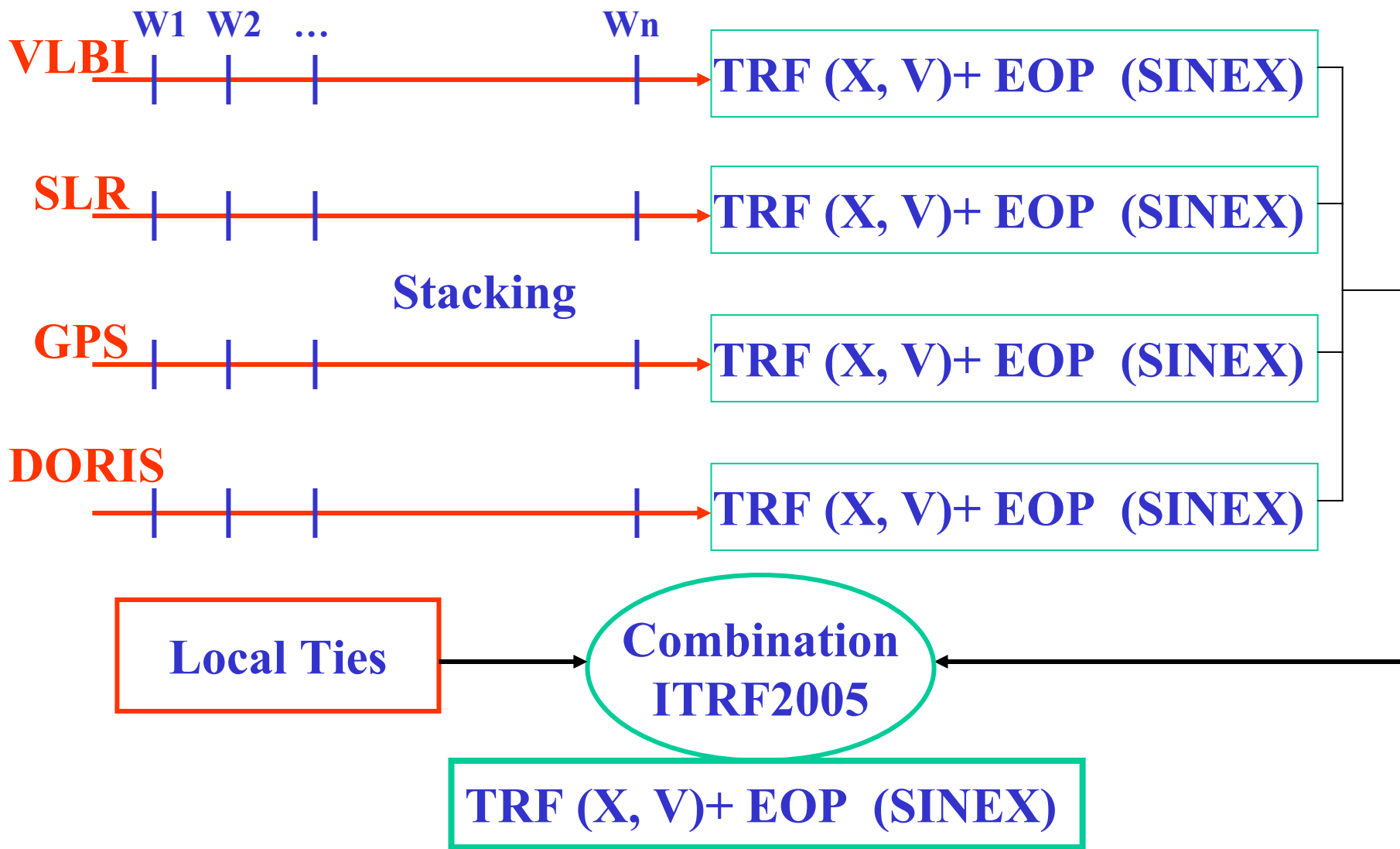
**Status of the ITRF2005  
(March 10, 2006 )**

**Zuheir Altamimi  
Institut Géographique National, France**

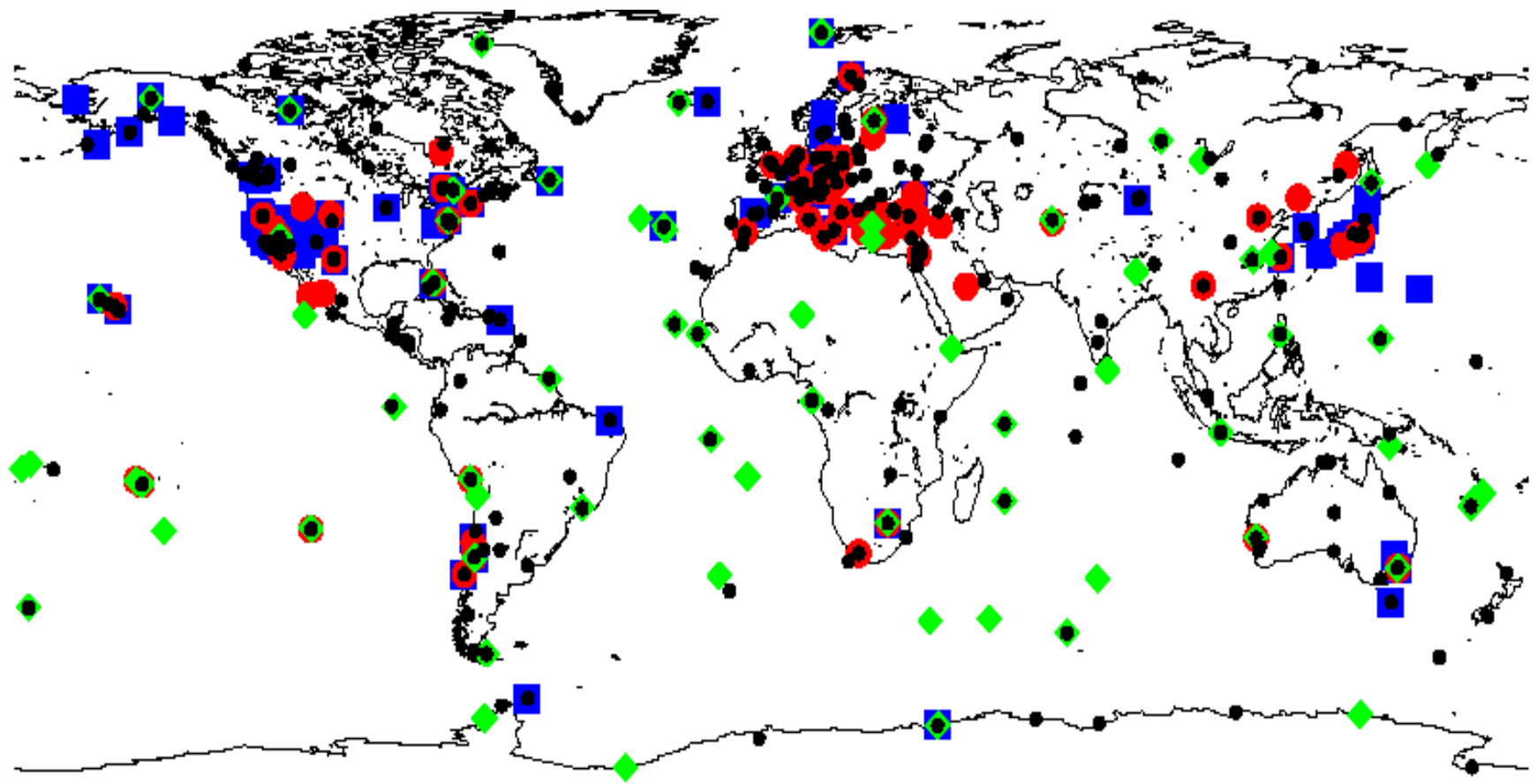
# SUMMARY

- ITRF2005 vs. previous ITRFs
- Submissions to ITRF2005
- DORIS preliminary results
- ITRF2005 origin and scale
- Plans for final ITRF2005 computation

# ITRF2005 Derivation



# ITRF2005: Co-locations



■ VLBI  
107

● SLR  
93

◆ DORIS  
124

● GPS  
350

## **Status of IVS submission**

- **Last version submitted March 1, 2006:**
  - **Data span 1979.x – 2006.0**
  - **~3600 Sessions/SINEX files**
  - **Current analysis seems OK**

## **Status of ILRS submission**

- **Last version submitted January 2006:**
  - **Data span 1993.0 – 2006.0**
  - **641 Weeks/SINEX files**
  - **Current analysis stabilized**

## **Status of IGS submission**

- **3rd version submitted in August 2005:**
  - **Data span 1996.1 – 2005.6**
  - **EOPs start 1999.2**
  - **497 weeks/SINEX files**
  - **Long-term solution by time-series stacking is ready**

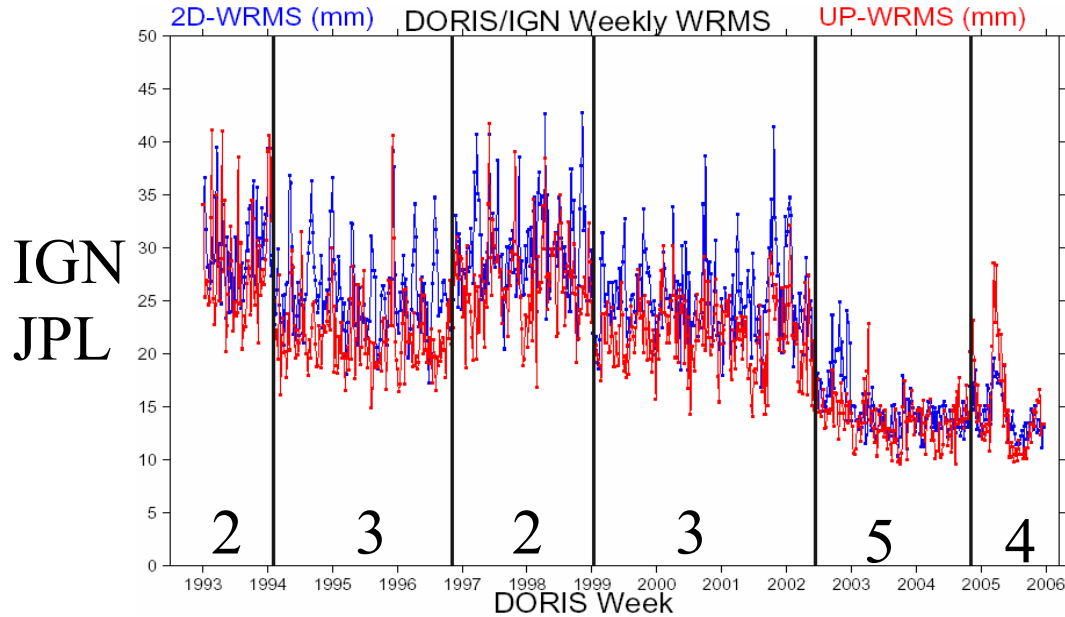
# Status of IDS submission

- **3 solutions**
  - **IGN-JPL: 1993.0 – 2005.5 (updated weekly)**
  - **LCA: 1993.0 – 2005.0 (resubmission on January 2006)**
  - **INASAN: 1993.0 – 2004.4 (early submission)**

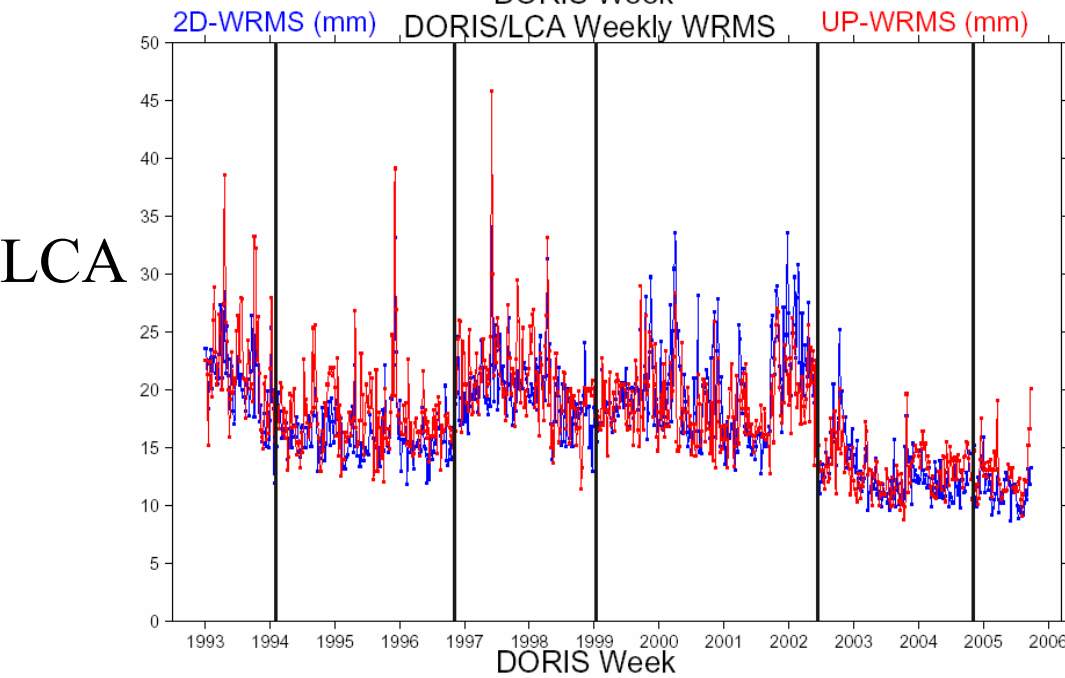


# DORIS WRMS: IGN & LCA

## Comparison to IGS: Indicative WRMS



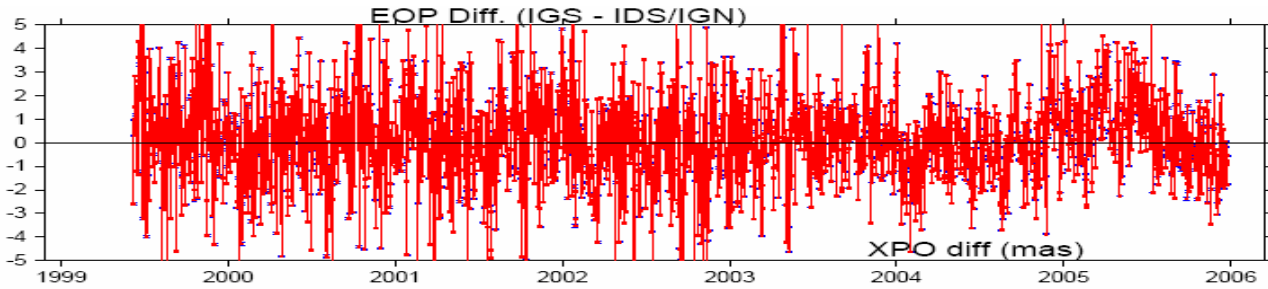
Pos.	2-D mm	UP mm
IGN	6.5	6.7
LCA	6.6	9.0



Vel.	2-D mm/y	UP mm/y
IGN	1.7	1.6
LCA	1.6	2.3

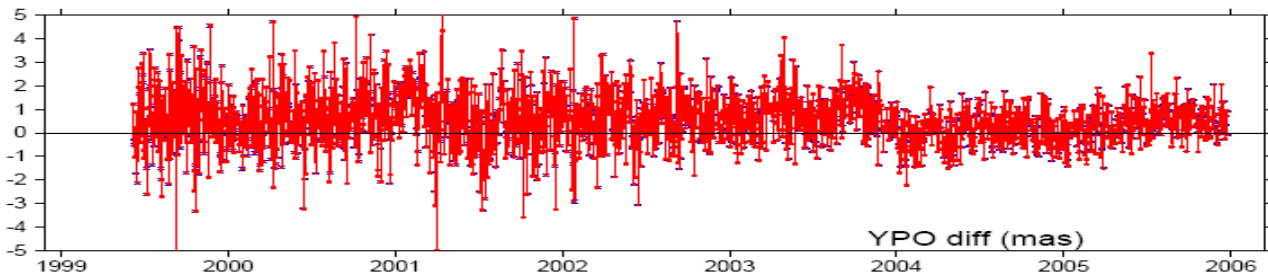
# IGS – DORIS Polar Motion Differences

Xpole

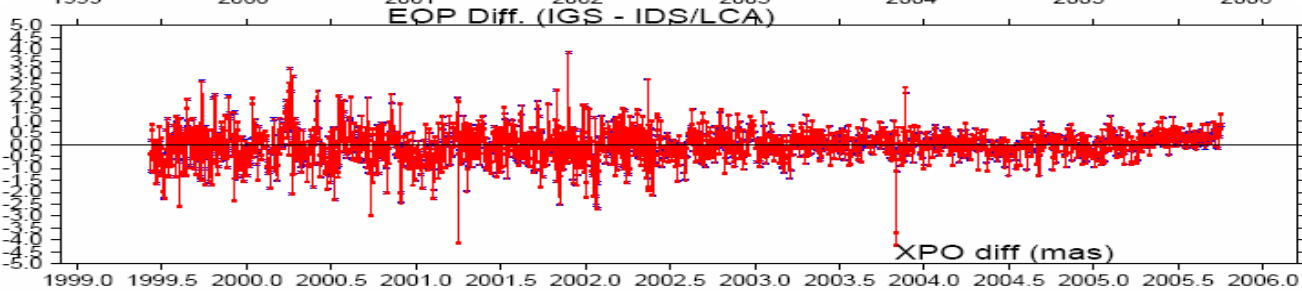


IGN

Ypole

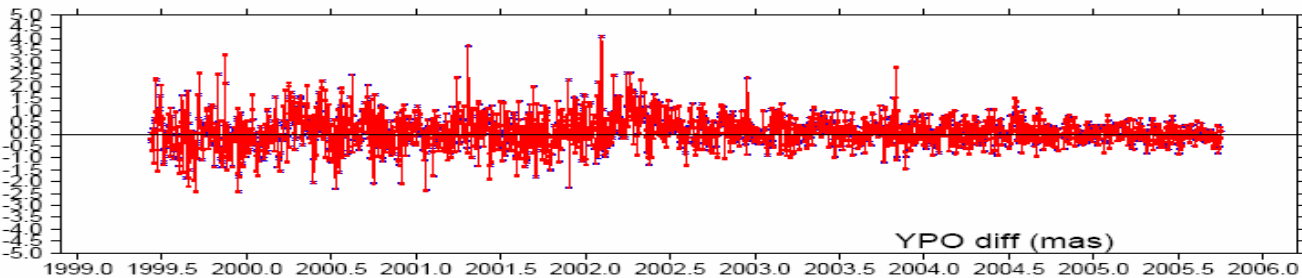


Xpole

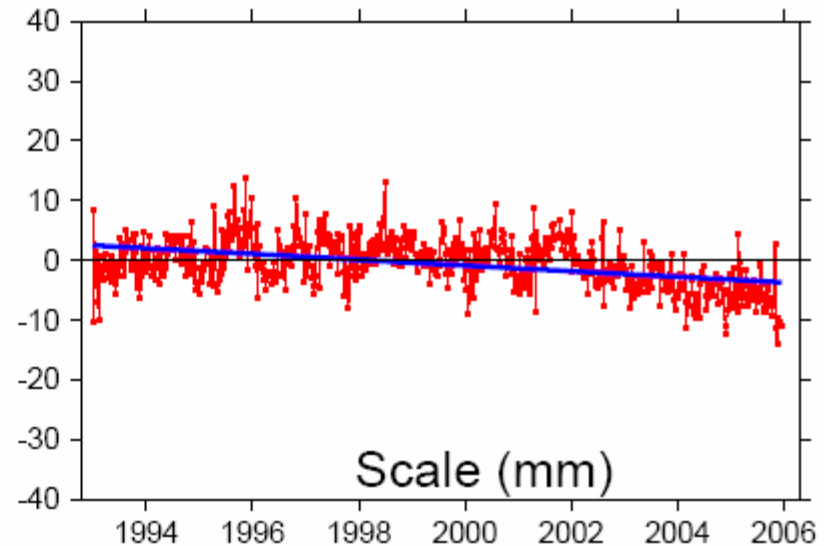
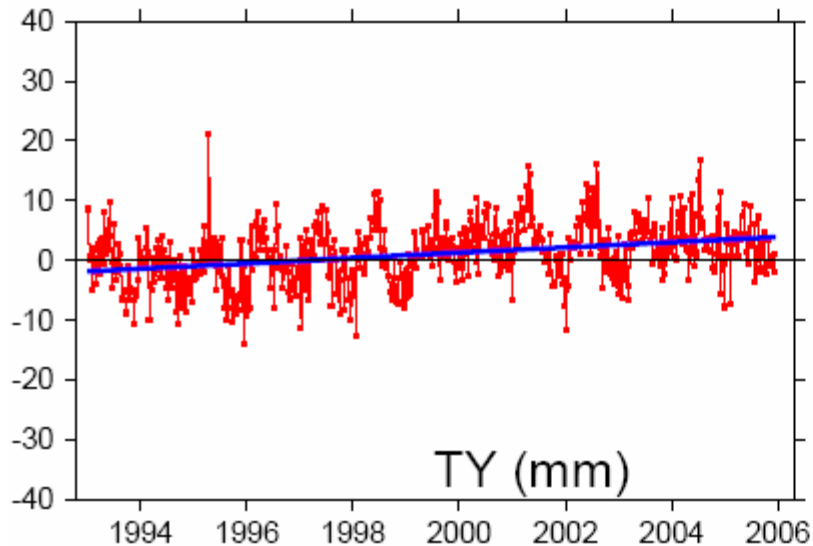
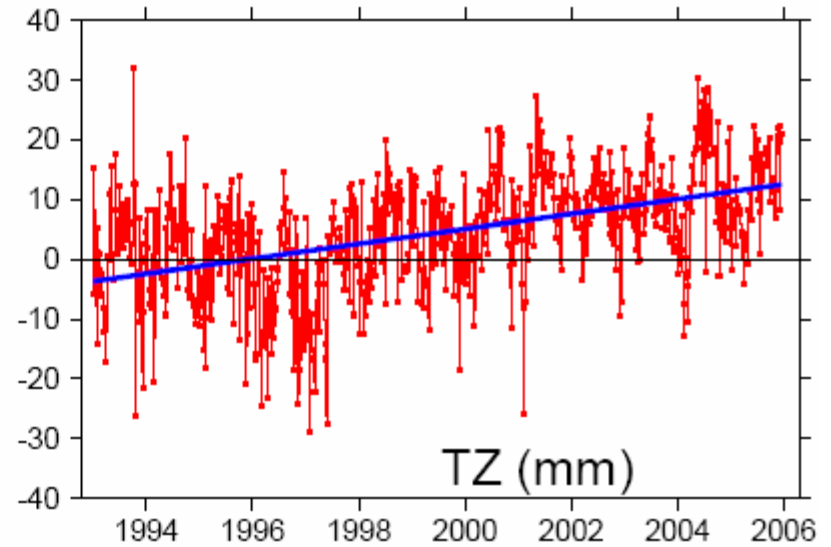
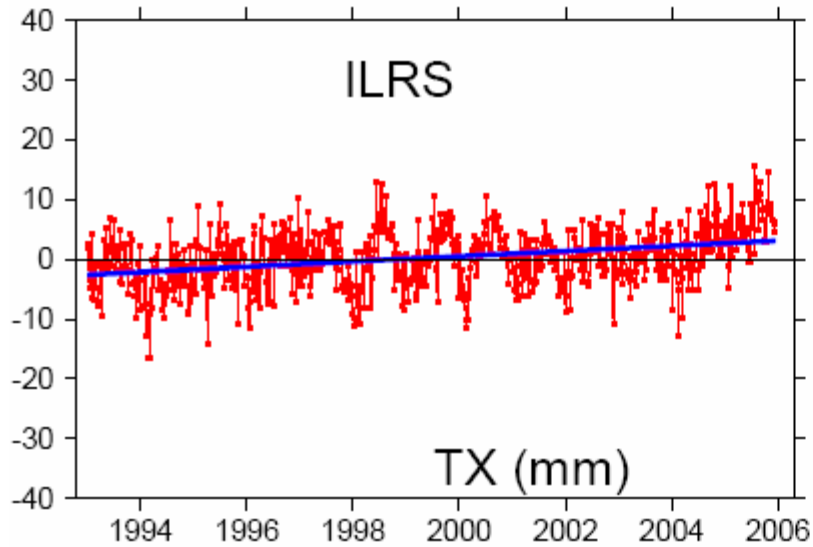


LCA

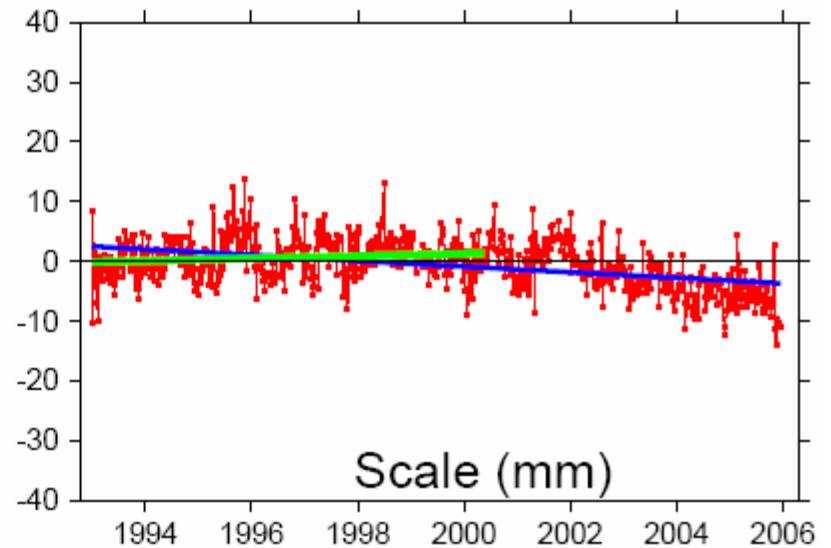
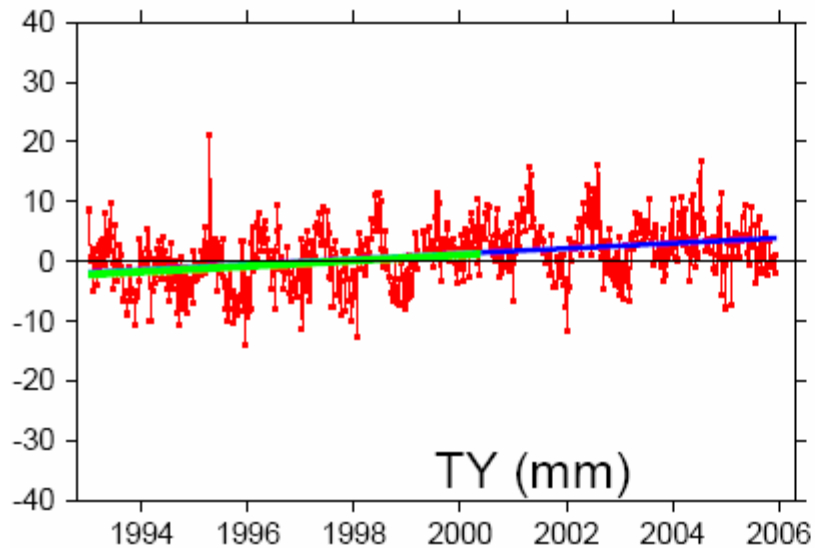
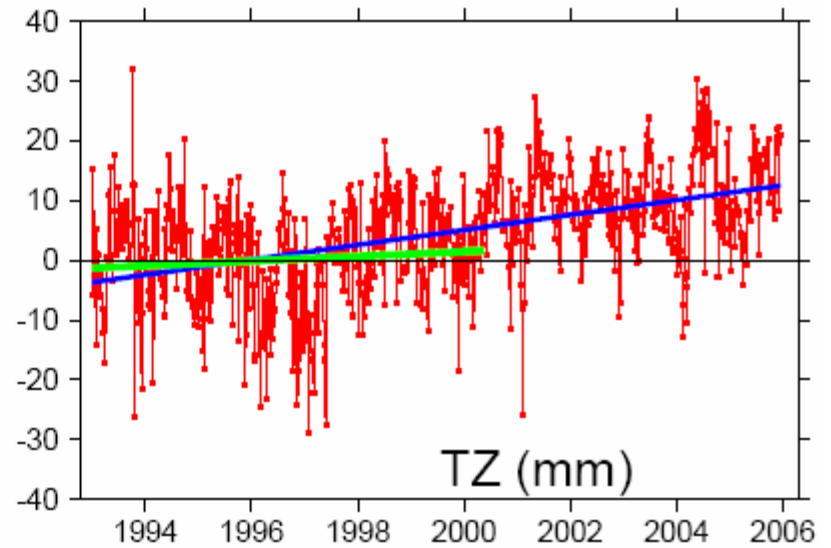
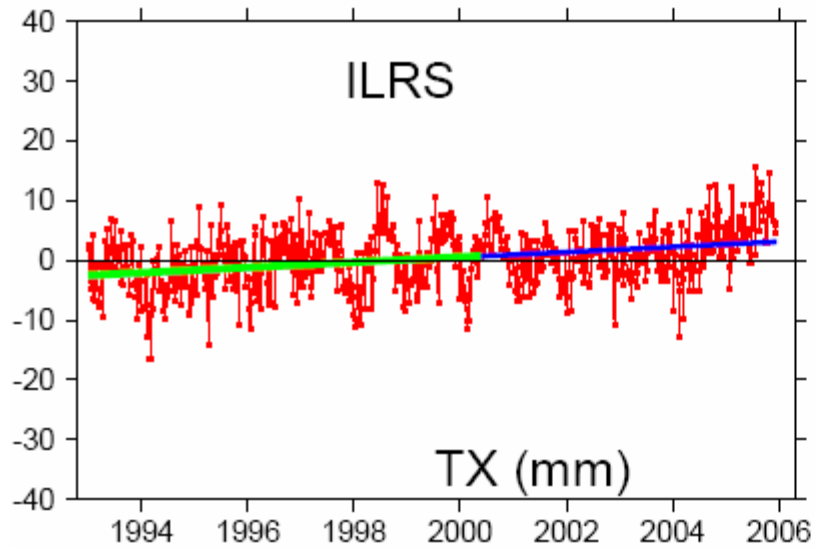
Ypole



# SLR Origin and Scale Variations WRT ITRF2000

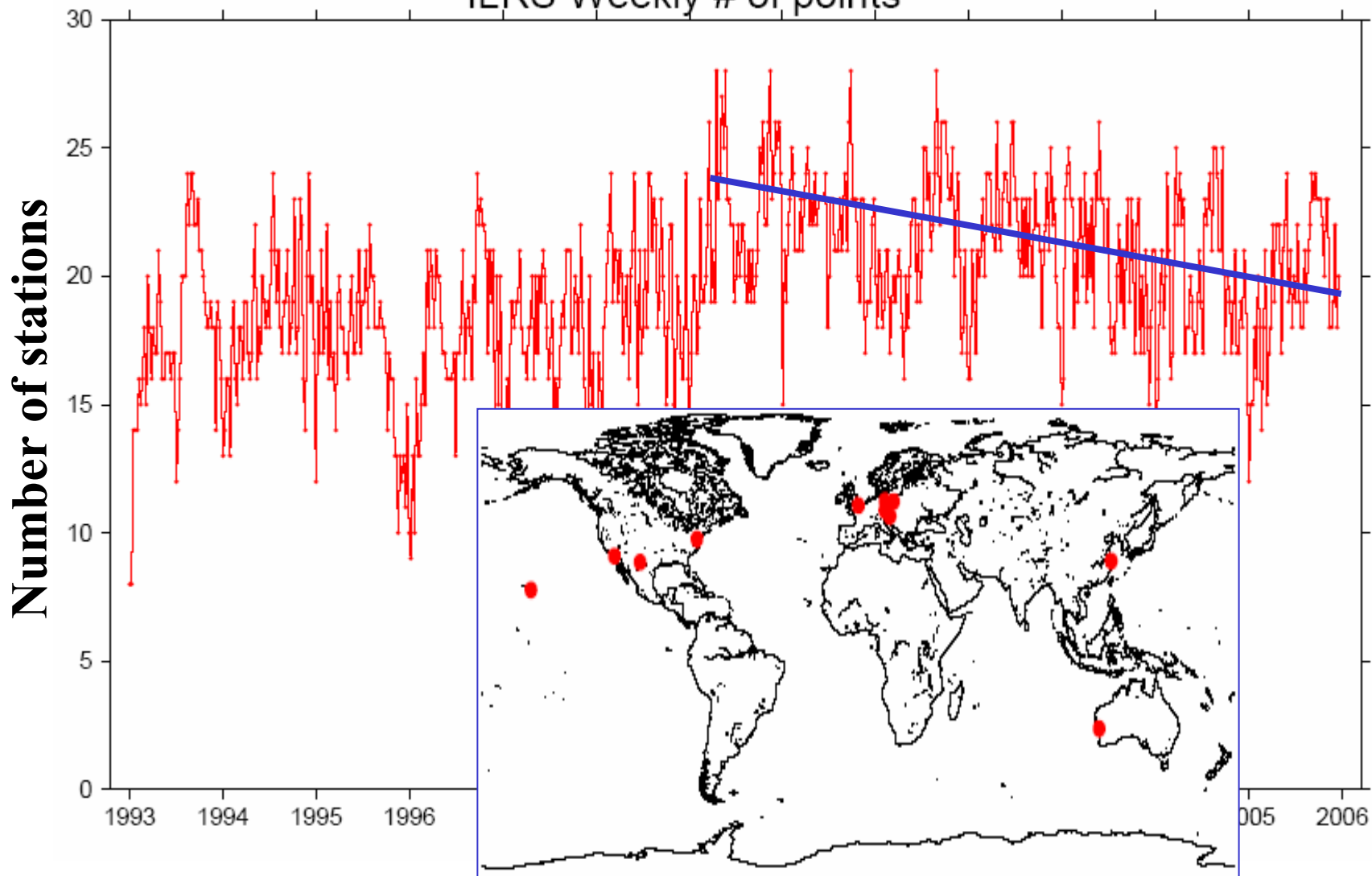


# SLR Origin and Scale Variations WRT ITRF2000



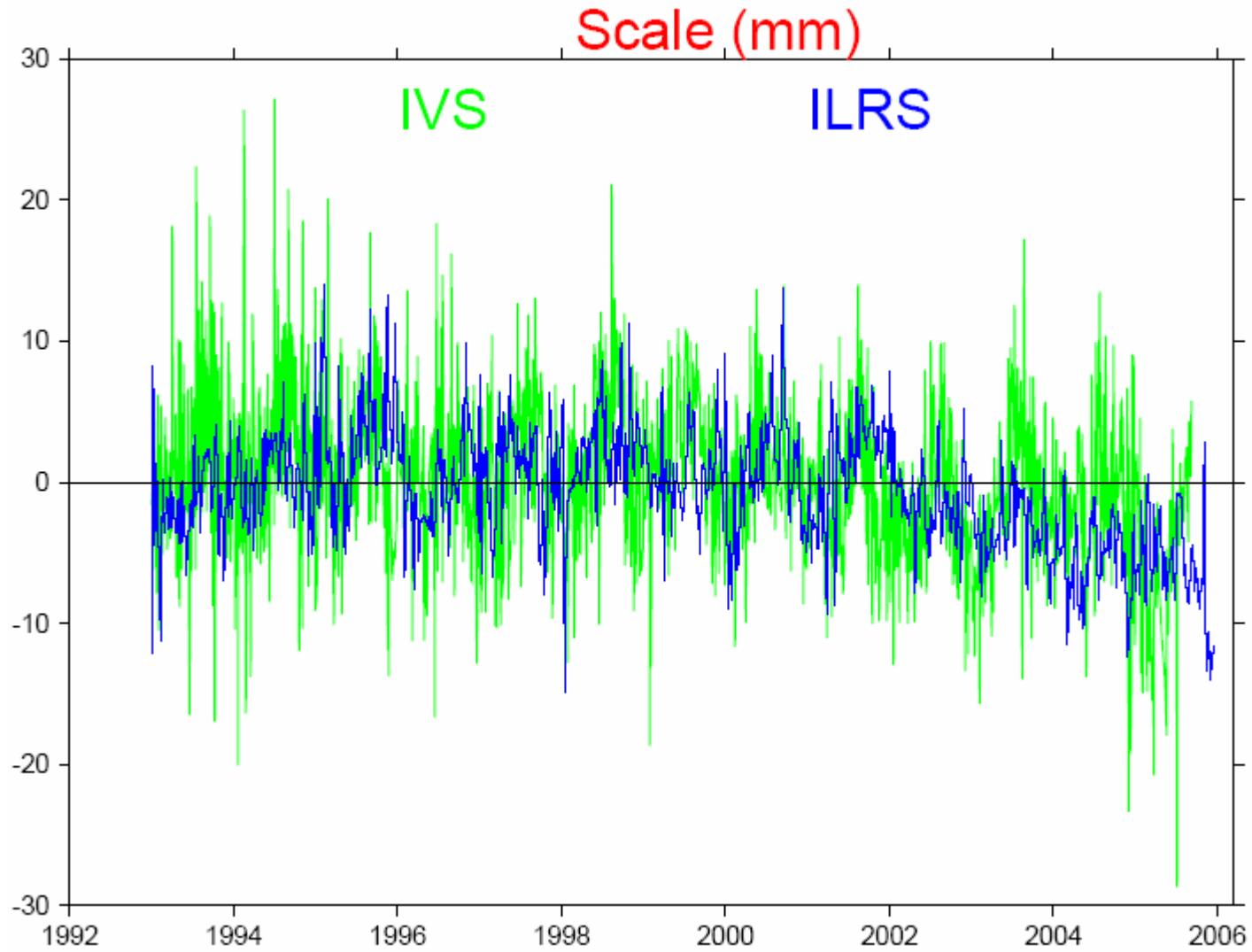
# ILRS Network

ILRS Weekly # of points



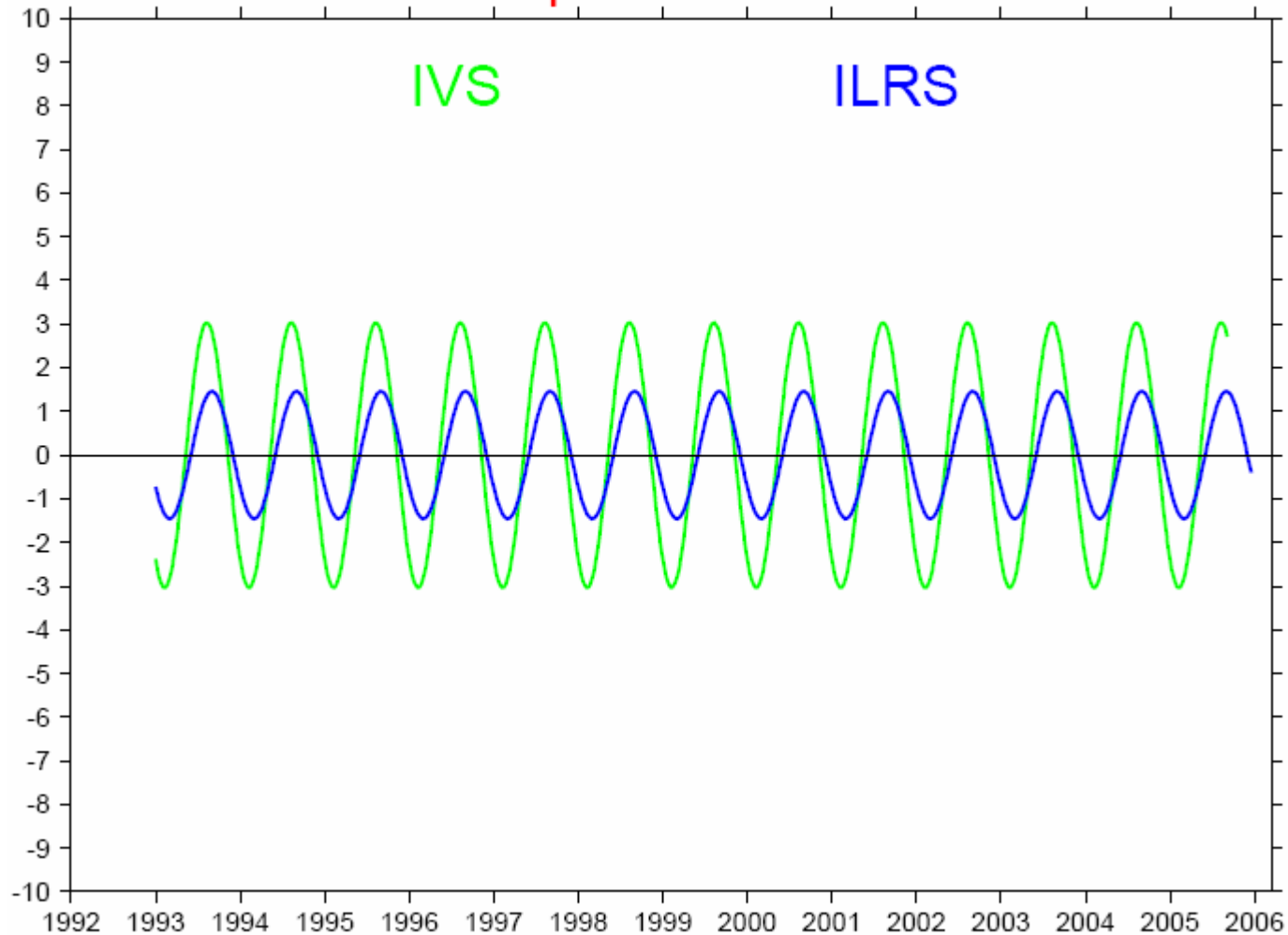
Core Network

# VLBI and SLR Scale wrt ITRF2000

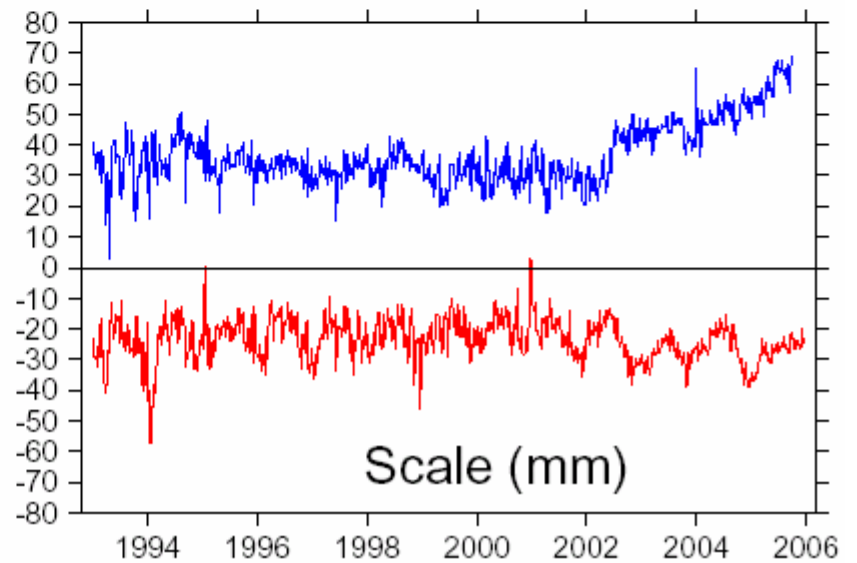
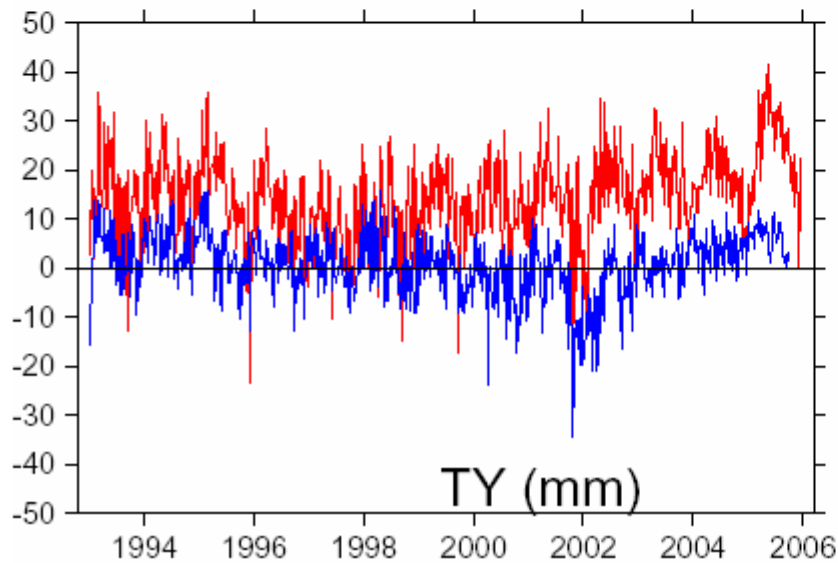
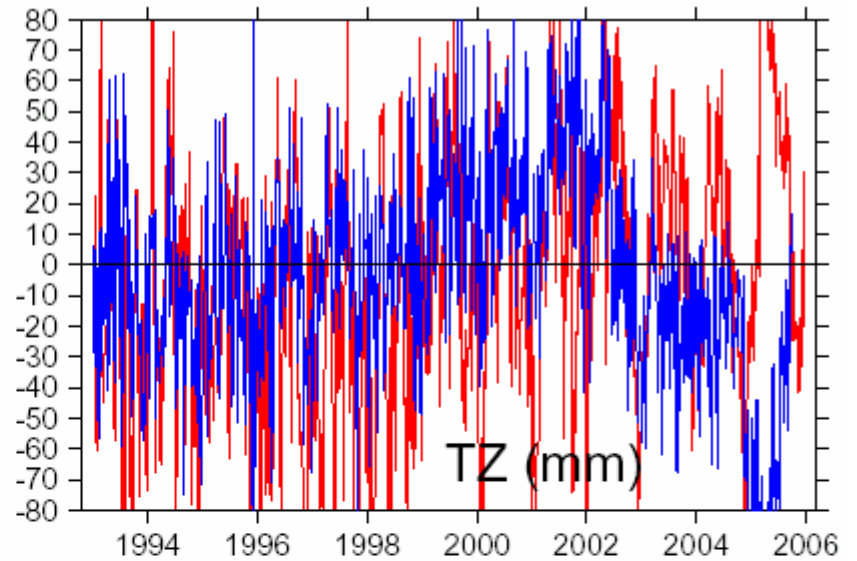
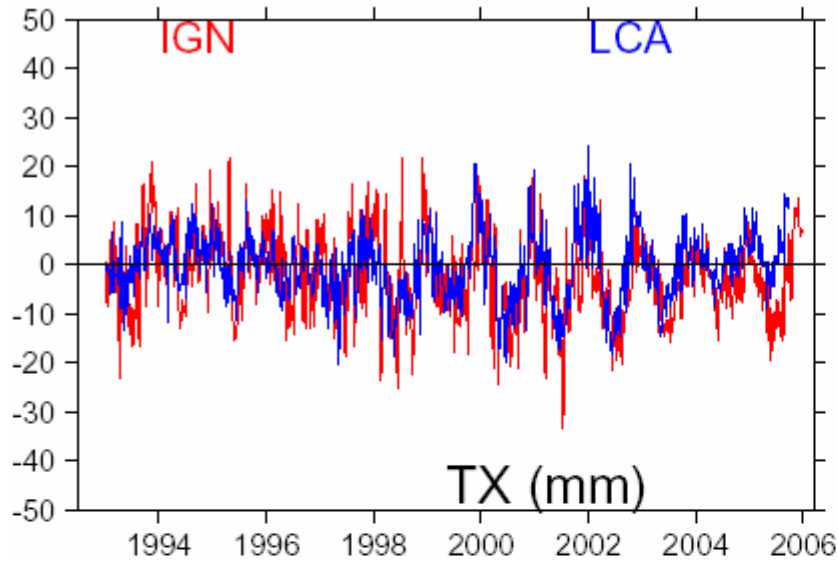


# VLBI and SLR Scale wrt ITRF2000: Annual Amplitude & Phase

Scale Amplitude and Phase

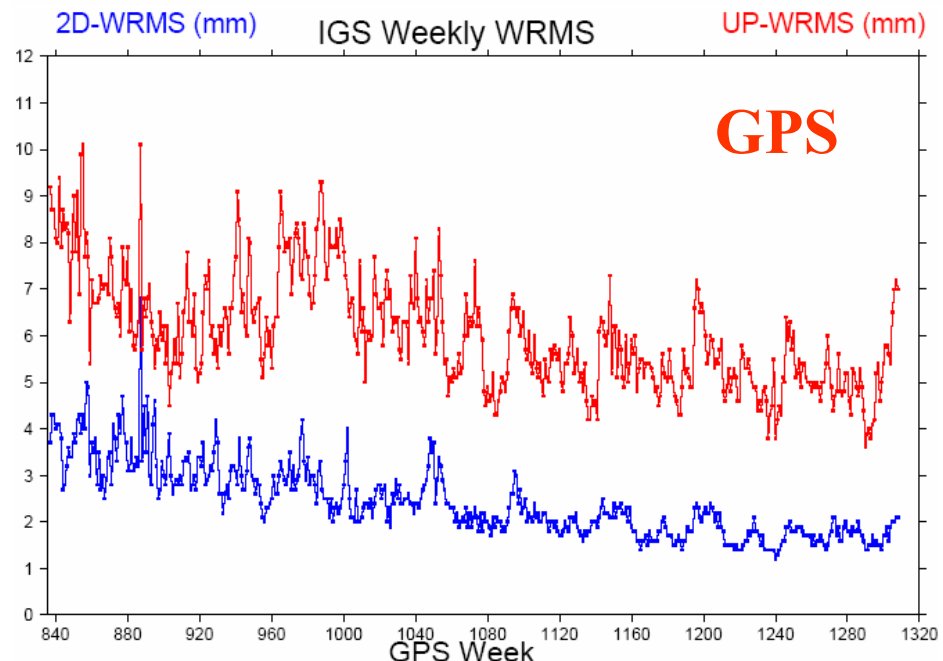
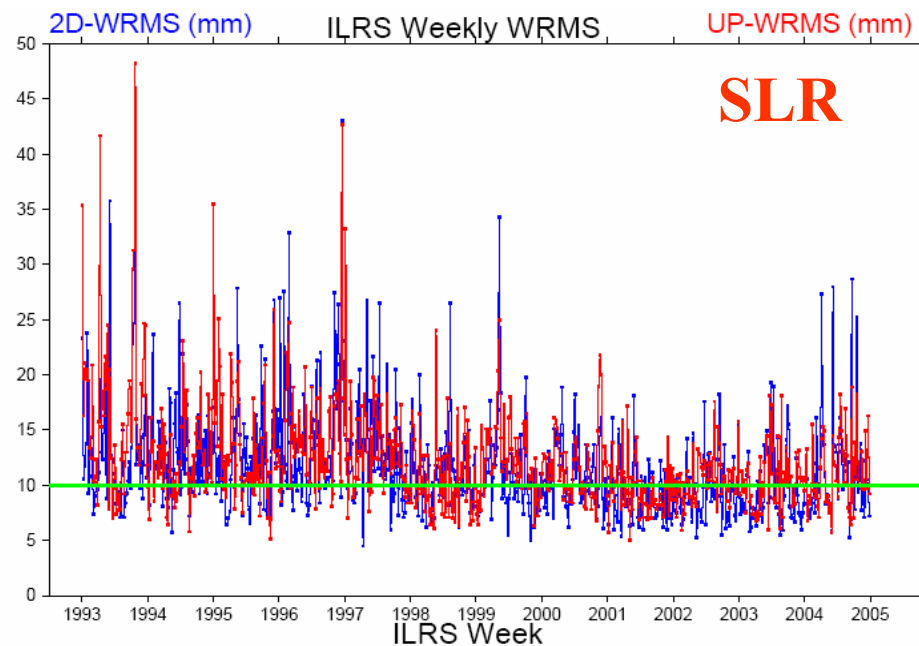
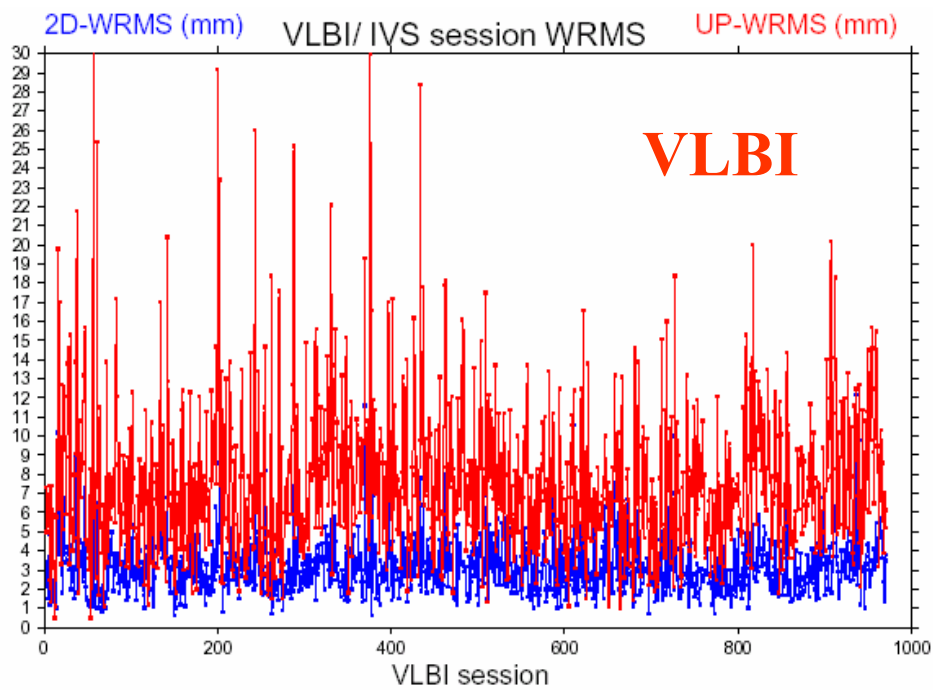
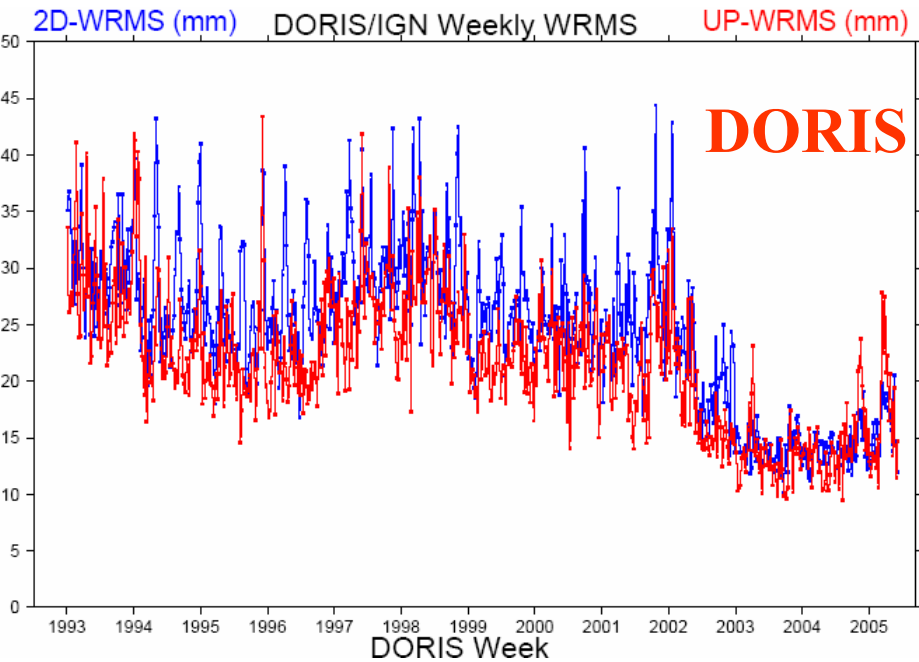


# DORIS Origin and Scale Variations WRT ITRF2000





# Internal Quality Evaluation: Weekly WRMS



# **ITRF2005 Final**

**Target: End of April - Early May 2006**

**Thank you!**