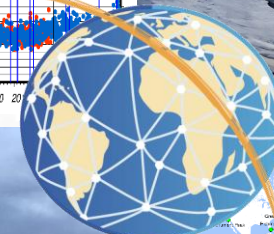
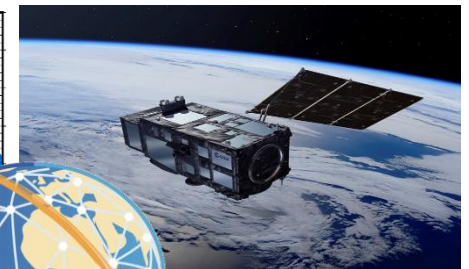
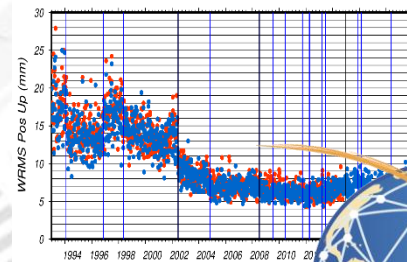


DPOD2020 Version 6.0

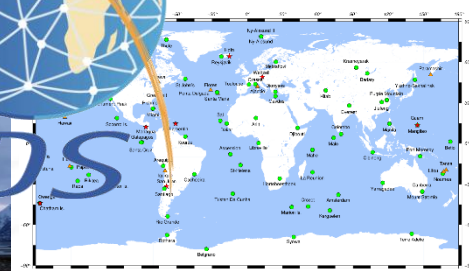
Guilhem Moreaux

Collecte Localisation Satellites

2026/05/29



IDS





DPOD2020 Version 6.0

- **Is based on the DORIS position and velocity cumulative solution ids26d01**

(stacking of the IDS combined series ids 19/26 from 1993 doy 003 to 2025 doy 362). More details on that cumulative solution can be found on <https://ids-doris.org/user-corner/combination/cumulative-solution.html>

- **As version 5.0, this new release includes:**

- Annual and semi-annual corrections.
- Periodic terms are only estimated for sites with observations after mid-2002.
- Post-Seismic Deformation corrections from DORIS observations only. Concerns only SODA (Socorro Island) and GONC (Goldstone) stations.

- **Is available in SINEX and text formats.**

- **SINEX solution contains two additional (and unofficial) blocks:**

- SOLUTION/DISCONTINUITY: origin (ex: earthquake, beacon change, antenna problem...) of the position discontinuities.
- SOLUTION/DATA_REJECT: periods of time not included in the combination.

- **To facilitate the identification of stations which were active late 2025, for these stations their ending time in the SOLUTION/EPOCHS were set to 49:365:86399.**



DPOD2020 Version 6.0

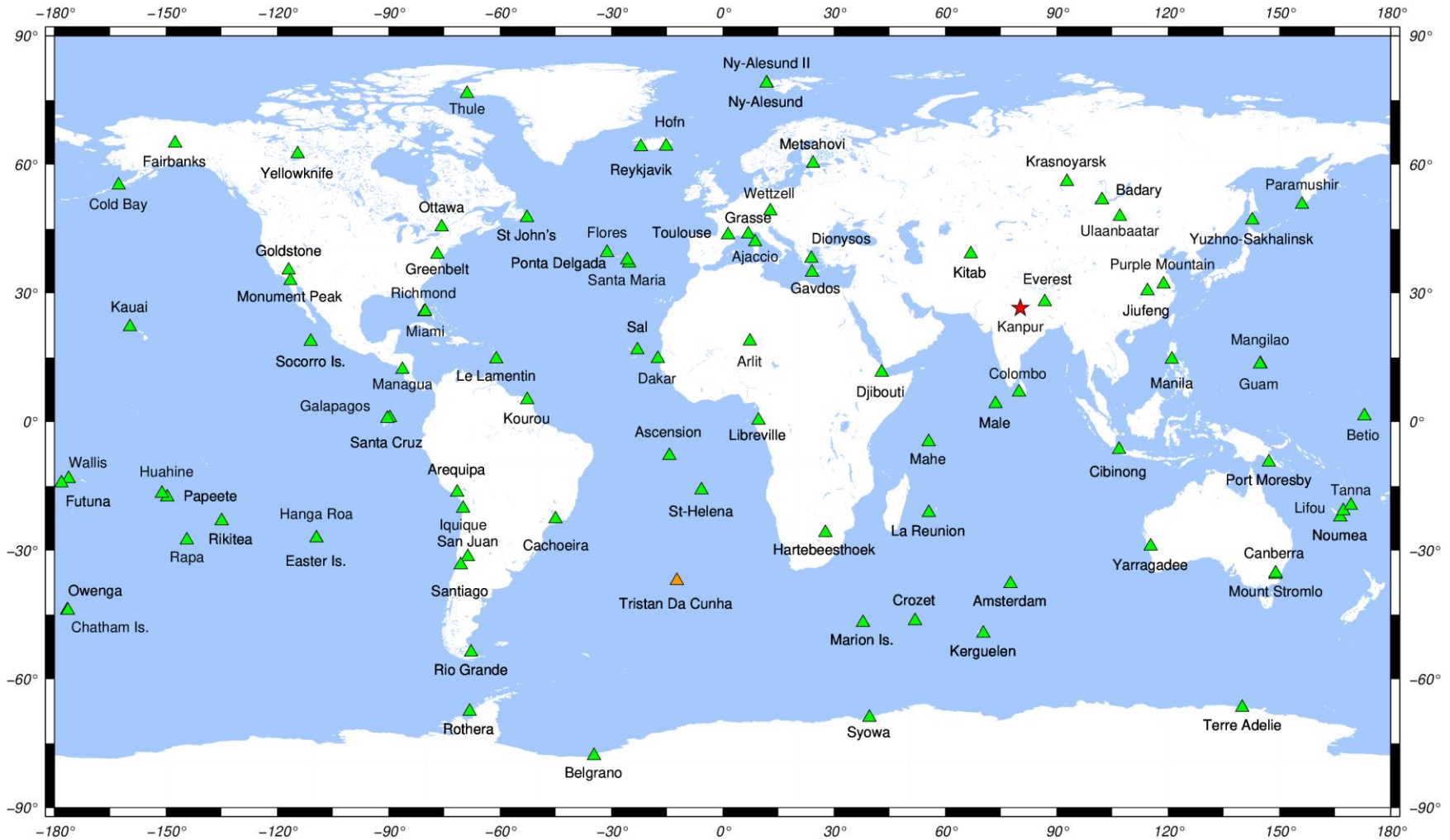
	DPOD2020 v5.0	DPOD2020 v6.0
Observations time span	1993.0-2025.5	1993.0-2026.0
Nb of stations	226	228
Nb of sites	90	91
Discontinuities		
Overall number	135	140
Nb of affected sites	50	51
Nb of affected stations	68	69
With geophysical origin	60	63
With technical origin	25	26
With unknown origin	50	51

**Two more stations: KANC (Kanpur) and TRJC (Tristan).
One more site: Kanpur (India).**



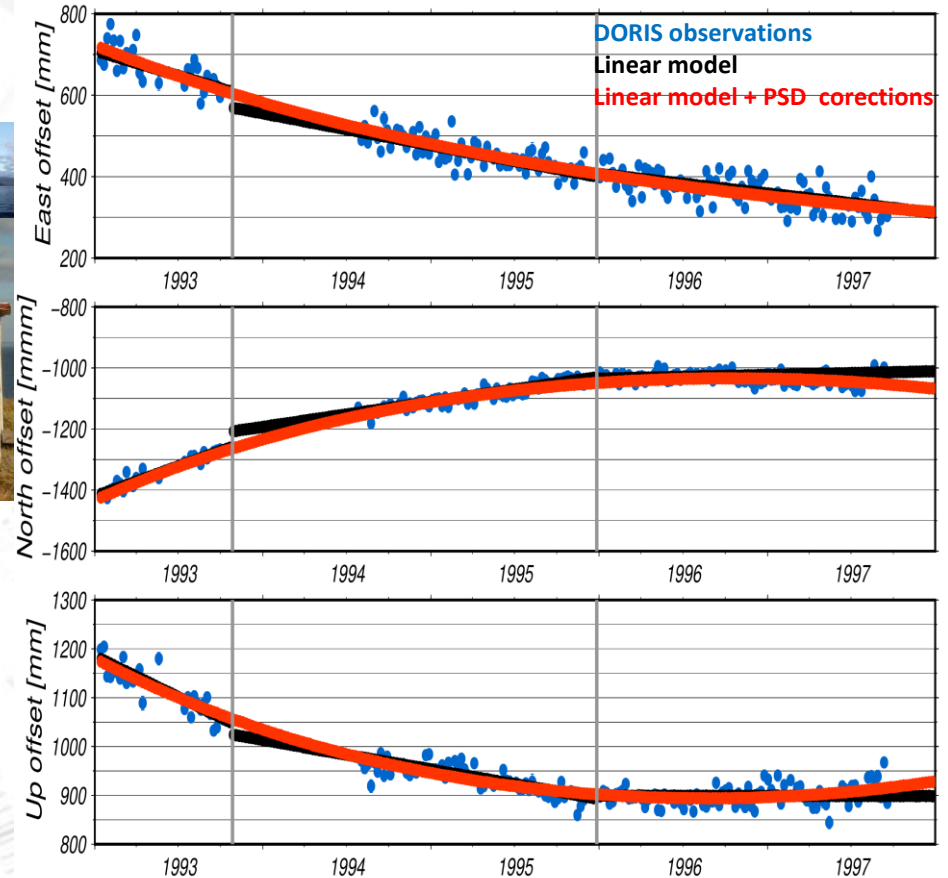
DORIS Station Network

Two more stations since DPOD2020 v5.0: KANC (Kanpur) and TRJC (Tristan).
One more site since DPOD2020 v5.0: Kanpur (India).



Post-Seismic Deformation Corrections

SODA – Socorro Island



DORIS is at Socorro since 1991/02/08.
Host agency: INEGI & Armada de Mexico.
Tide gauge (Gloss nb 162) @ 370m.
No GNSS, no SLR, no VLBI.

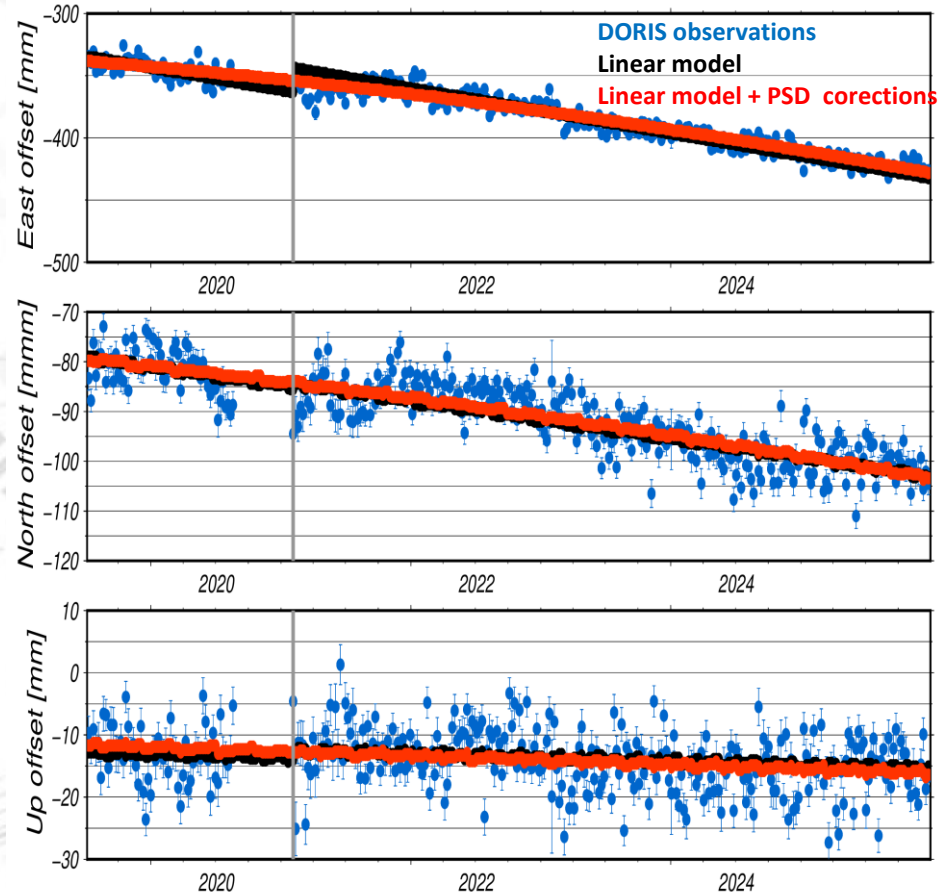
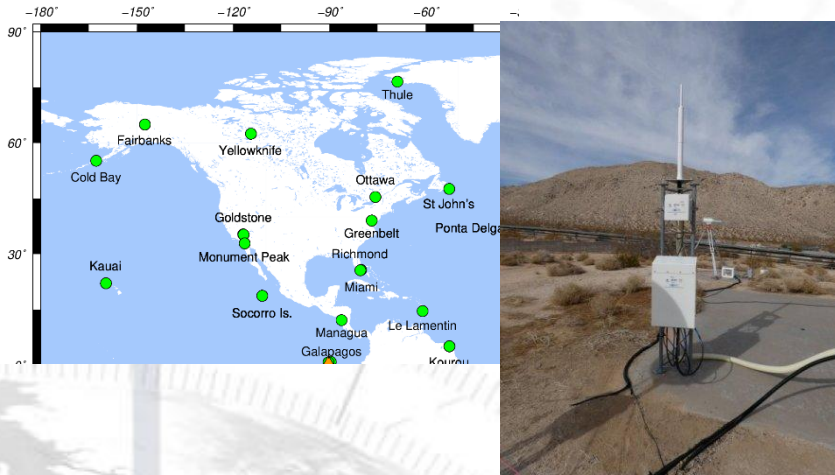
Submarine eruption on 1993/01/29 @ 4km.

PSD weekly corrections from 1993/01/13 to 1998/05/13.
PSD corrections are given in ASCII text file *dpod2020_060_psd_corr.txt*.



Post-Seismic Deformation Corrections

GONC – Goldstone



**DORIS is at Socorro since 1988/01/21.
Host agency: NASA.
No colocation.**

M7.1 Earthquake on 2019/07/06 @ 93km.

**PSD weekly corrections from 2019/07/10 to 2027/12/29.
PSD corrections are given in ASCII text file `dpod2020_060_psd_corr.txt`.**