

DORIS



The *IDS* Web service



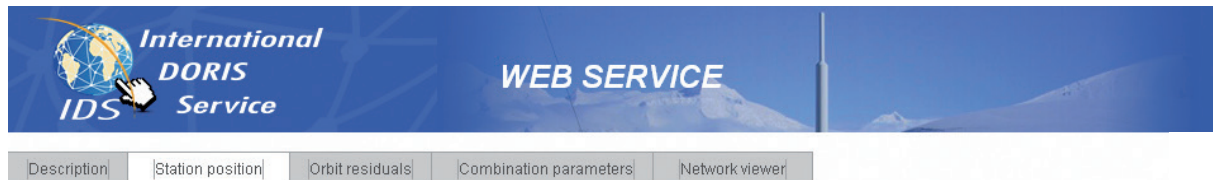
Introduction



DOR-O-T for DORis Online Tools (pronounced in French like the given name Dorothee) is the IDS web service developed to promote the use of DORIS products.

The current version of the service provides tools to browse time series in an interactive and intuitive way.

Besides products provided by the CNES Orbitography Team and the IDS components (Analysis Centers and Combination Center), this service allows comparing time evolutions of coordinates for DORIS and GNSS stations in co-location, thanks to a collaboration with the IGS Terrestrial Frame Combination Center.



The Tools



The tools proposed by this web service are:

→ a NETWORK VIEWER to select sites

→ a family of PLOT TOOLS to visualize the following time series:

Station position differences at observation epochs relative to a reference position

- North, East and Up trended time series.

Orbit residuals and amount of station measurements from CNES Precise Orbit Ephemeris processing

- RMS of post-fit orbit residuals, total and validated number of DORIS measurements per arc.

Combination parameters i.e. outputs of the IDS Combination Center analysis

- WRMS of station position residuals, scale and translation parameters, number of stations used in the analysis.

The plot tools allow users to:

→ select charts to plot

→ display time series

→ edit data

→ change plot appearance

→ specify scaling

→ download data, plots and graph statistics in several formats.

They are equipped with statistic tools for the calculation of mean, slope and weighted rms with respect to the slope (Weighted Relative Standard Deviation).

Several series can be viewed and compared on the same graph.

Additional data can also be displayed, such as station or satellite events.

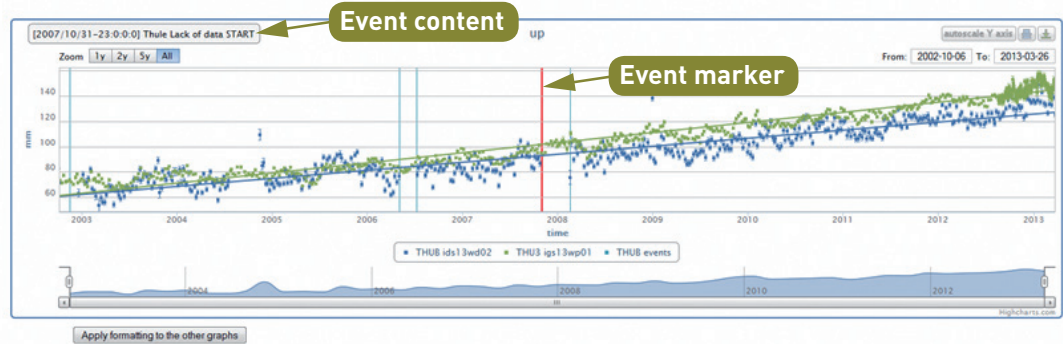
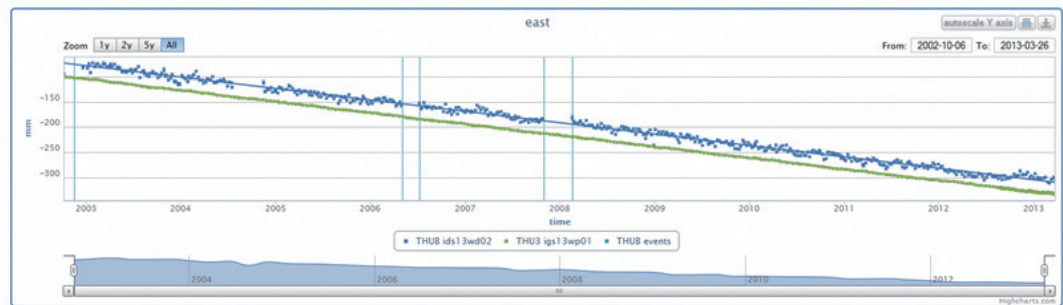
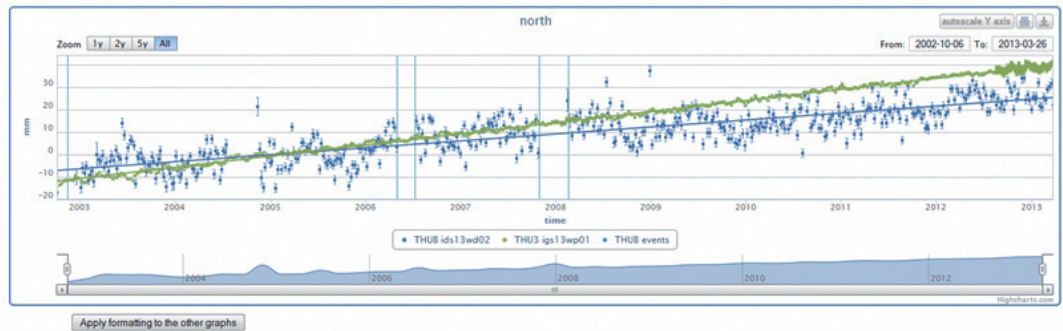
An online help is available too.



Time series of station positions

The available time series are:

- for **DORIS** sites, series from the IDS Analysis Centers and combined series from the IDS Combination Center.
- for **GNSS** sites **co-located with DORIS**, combined series from the IGS Terrestrial Frame Combination Center.



- Print chart
- Export menu

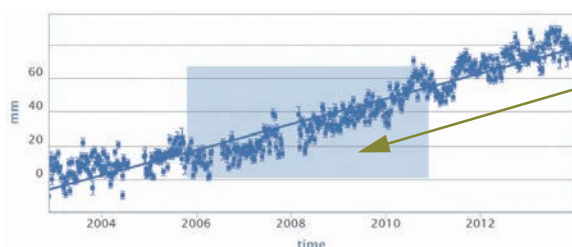
From: 2009-04-08

- export data to CSV
- export data to XML
- export plot to PNG
- export plot to JPEG

Displayed series (including modifications i.e. edited points, slope and/or bias added/removed) can be downloaded in CSV or XML formats. Each plot can be exported in PNG or JPEG format.

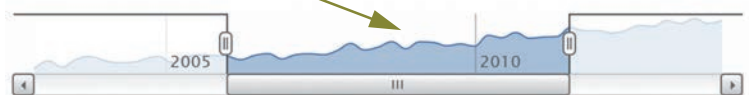
Time series of the DORIS and GNSS stations in Thule (Greenland)

Zooming



"Ctrl" key and mouse range selector navigator below graph

From: 2006-01-03 To: 2011-07-14



- THUB ids14wd04
- THUB esa14wd10
- THUB lca14wd40

To hide a series, just click on its caption



Site selection, data loading

Additional data

Complete the selection with station and satellite events

→ new sites, new antennas, removed sites, beacon failures, major recent earthquakes in vicinity (from USGS survey service).

→ events concerning DORIS onboard receivers, POE performances.

Series selection

You can choose here the data to plot :

1. Select a station from the list or the map.
2. Select data series from the station tables.
3. If desired, complete your selection with additional data.
4. Click on "Plot new graphs" when ready.

Search: Thule

DORIS

- THULE : THUB

GNSS

- THULE : THU3

Station	Code	Series
THULE	THU3	igs13wp01

DORIS stations

Name	Code	ids13wd02	esa13wd07	gsc13wd18	ign13wd08	lca13wd30
THULE	THUB	[icon]	[icon]	[icon]	[icon]	[icon]

Additional data: None

Buttons: Unselect all series, Reset all selections, Plot new graphs

Access to site information

Download data in IDS STCD format

Load the charts

More with the menu bar

Select Stations	Graphs appearance	Statistics	Modify data	Create a PDF report	Help
-----------------	-------------------	------------	-------------	---------------------	------

Besides the site selection, the menu bar proposes functions to:

→ tune the graph appearance

Change color, line size and style, remove trend lines and error bars, choose the time scale.

→ get statistics for the plotted points

They are refreshed each time the plots are modified (zoom, data removed, selection,...).

→ modify data

Shift, change slope, remove a series or a selection of points.

→ get a report in PDF format

It includes the North, East and Up plots, and the statistic table.



Use the selection mode to paste series and obtain statistics of the merged series

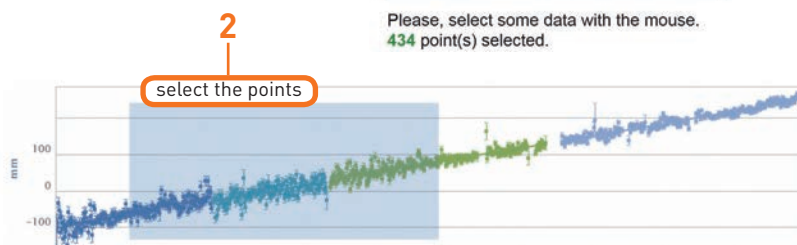
Action

- Shift data/change slope
- Remove data

Data

- Series
- Selected points

Please, select some data with the mouse. 434 point(s) selected.



Statistics

Series	Mean	WRSD	Fitted slope	Period
HBKA lca14wd40	-59.99mm	16.68mm	19.47+/-0.87mm/year	1993/1/6-1997/5/21
HBKB lca14wd40	77.85mm	12.53mm	15.79+/-0.43mm/year	2000/9/13-2006/9/20
HBLA lca14wd40	-2.91mm	16.74mm	17.36+/-1.42mm/year	1997/6/11-2000/8/9
HBMB lca14wd40	194.98mm	8.66mm	17.27+/-0.24mm/year	2007/3/7-2013/12/25
Selected points	9.18mm	16.06mm	16.47+/-0.31mm/year	1995/3/29-2000/8/9



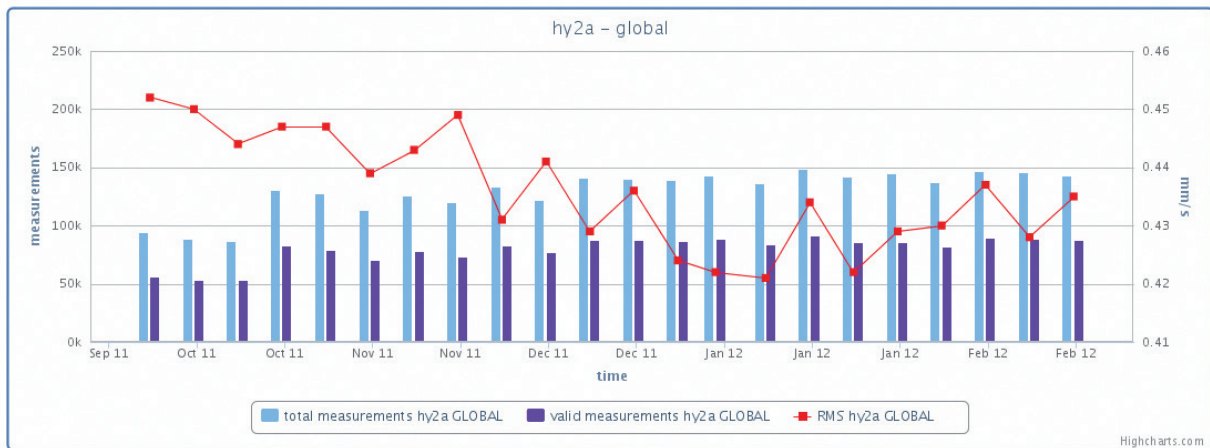
Orbit residuals



Complete the selection with station and satellite events

→ RMS residuals for DORIS in mm/s per arc (red dots).

→ number of DORIS measurements per arc: total (light blue columns) and validated (superimposed dark blue columns).



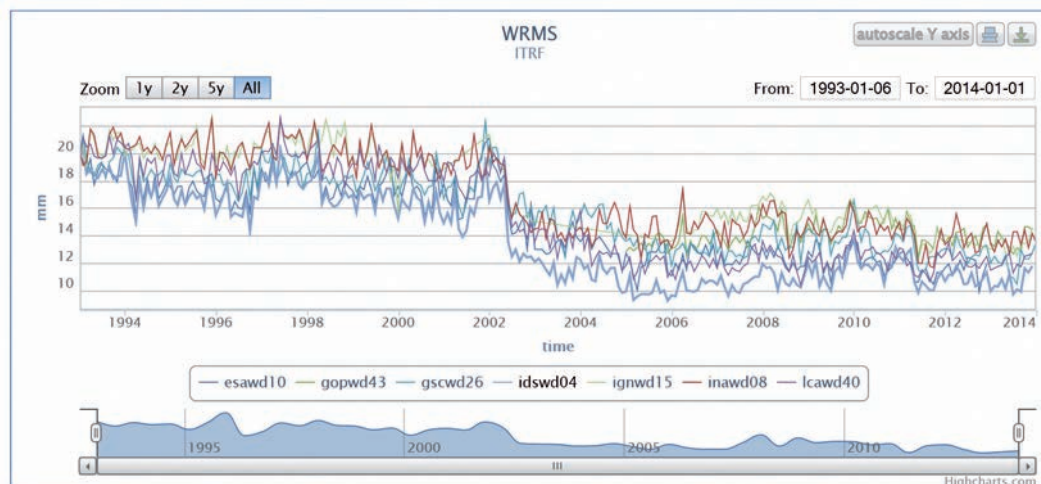
Statistics for the HY-2A mission from CNES POE

Combination parameters



The IDS Combination Center (CC) analyzes and combines sets of weekly solutions of station positions and EOP from the IDS Analysis Centers (ACs) to generate DORIS combined geodetic products. The IDS web service gives access to some outputs of the combination processing:

- WRMS of station position residuals.
- scale and translation parameters.
- number of stations used in the analysis.



WRMS of weekly series provided by the IDS ACs



The network viewer

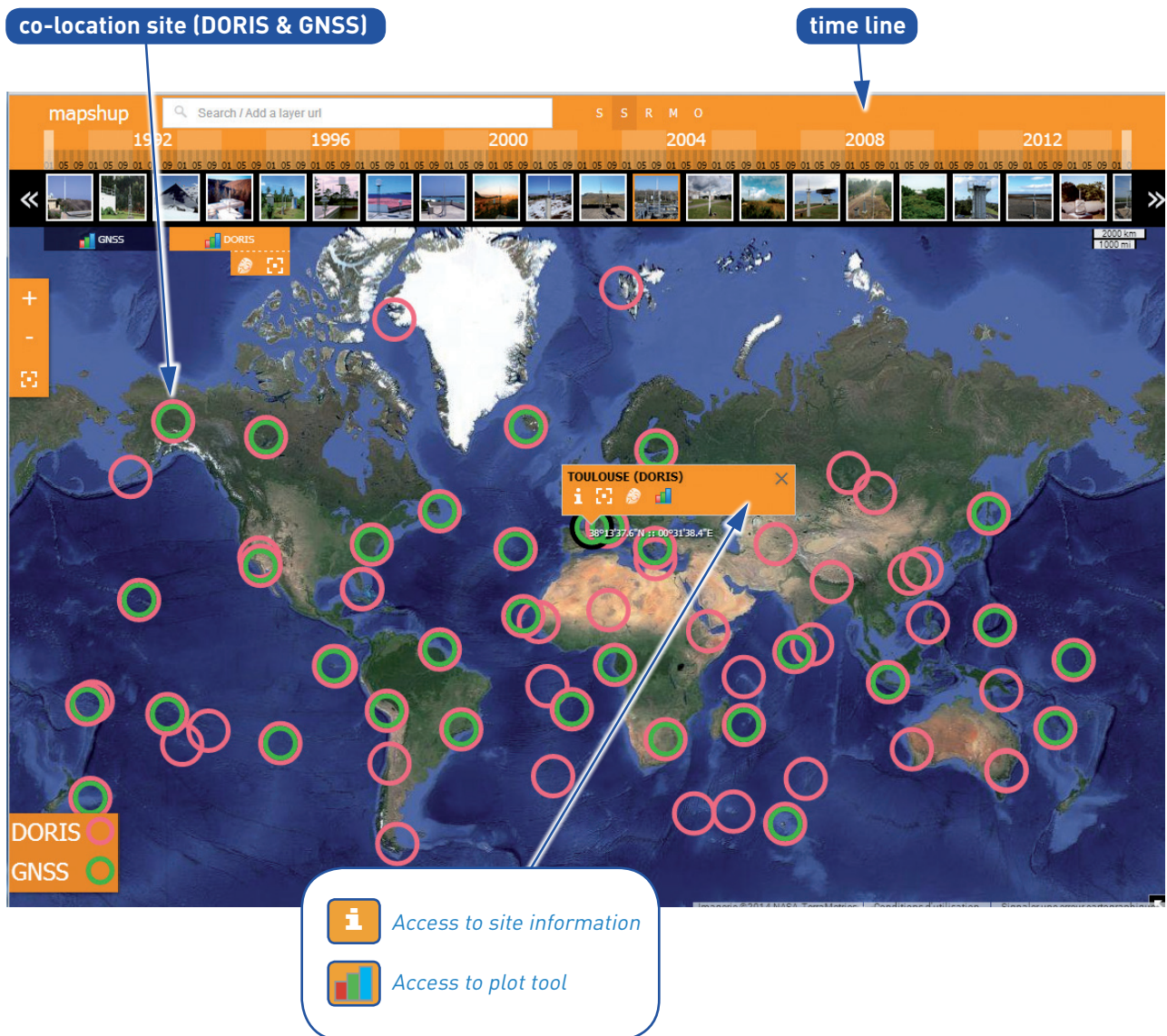


The interactive global map visualizes the DORIS sites and co-locations with other space geodetic techniques (only IGS GNSS sites for the moment).

From the map, the users can select sites and plot the available combined coordinates time series from IDS and/or IGS combination center.

They can also get access to site information.

The time line at the top of the map can be used to display the network over time.

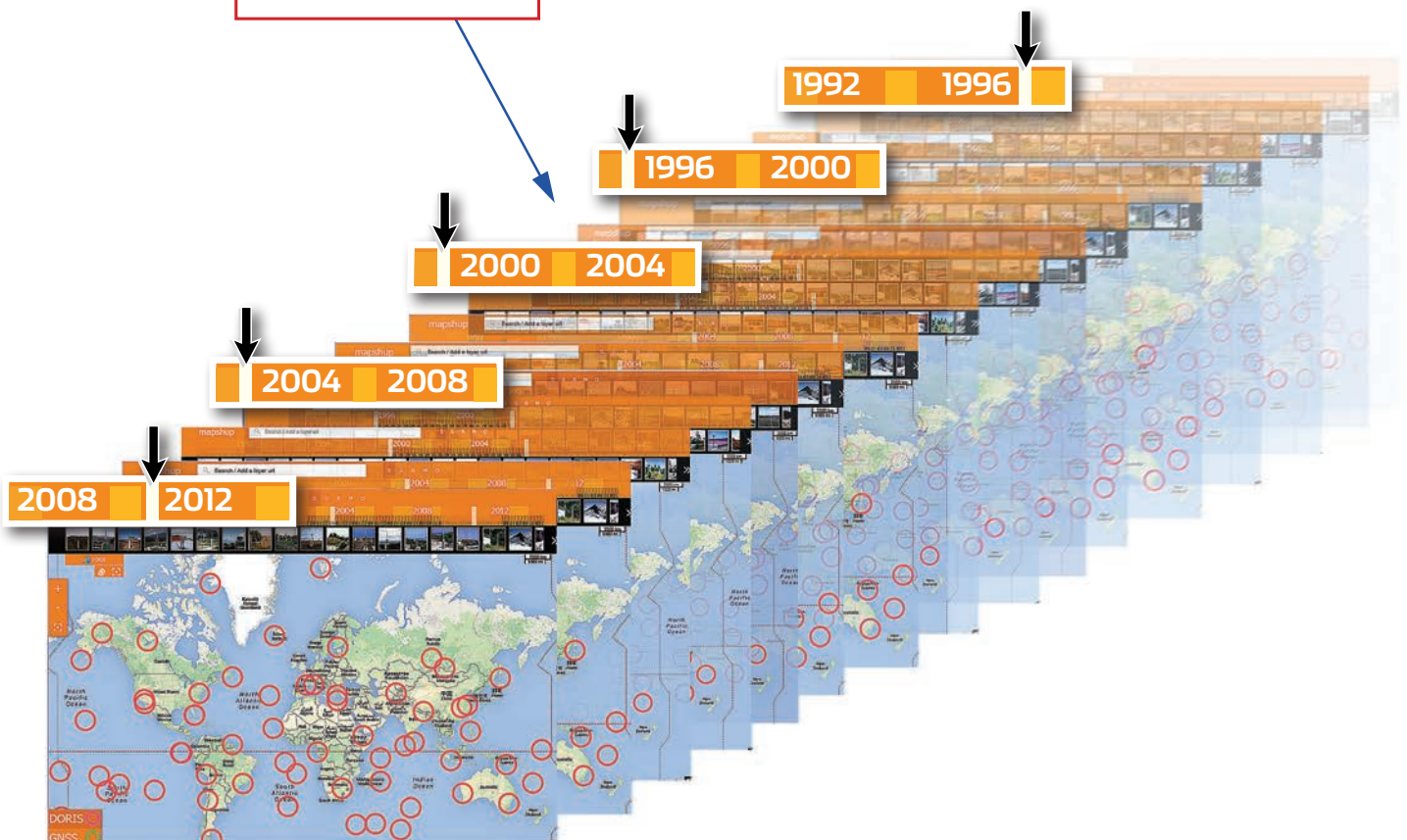




Using the time line



*Visualize the
time evolution
of the
DORIS network*



Technical details



- The network viewer is an interactive global map application called **Mapshup**.
- Supported browsers: Firefox, Google Chrome, Safari, Internet Explorer 8+.

<http://ids-doris.org/webservice>



IDS