



*International  
DORIS  
Service*



# Evaluation of Atmospheric Loading and Improved Troposphere Modeling



*N.P. Zelensky<sup>1</sup>, F.G. Lemoine<sup>2</sup>, D.S. Chinn<sup>1</sup>, K. Le  
Bail<sup>3</sup>, D.E. Pavlis<sup>1</sup>, S.S. Sanders<sup>1</sup>*

*<sup>1</sup> SGT Inc., Greenbelt, Maryland, U.S.A.*

*<sup>2</sup> NASA Goddard Space Flight Center, Greenbelt, Maryland,  
U.S.A.*

*<sup>3</sup> NVI Inc., Greenbelt, Maryland, U.S.A.*



**IDS Workshop – Session 3  
Venice, Italy  
September 25, 2012**

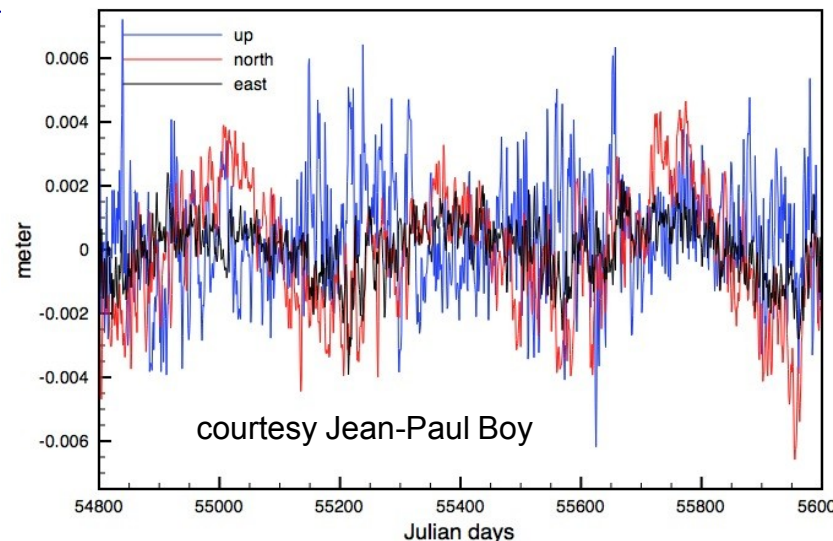




# Atmospheric station loading - Outline

- Evaluate non-tidal atmospheric station loading on SLR/DORIS Jason-2 POD with GEODYN, loading applied at the observation level.
- non-tidal atmospheric station surface displacements from ECMWF 6-hour pressure data (Tonie Van Dam, 2012, and/or Jean-Paul Boy, 2012).
- “nominal” orbit strategy includes SLRF2008 / DPOD2008 stations, and the Eigen\_gl04s gravity field (std1007 POD standards).

## Atmospheric Loading displacement at Greenbelt, Maryland 2009-2011

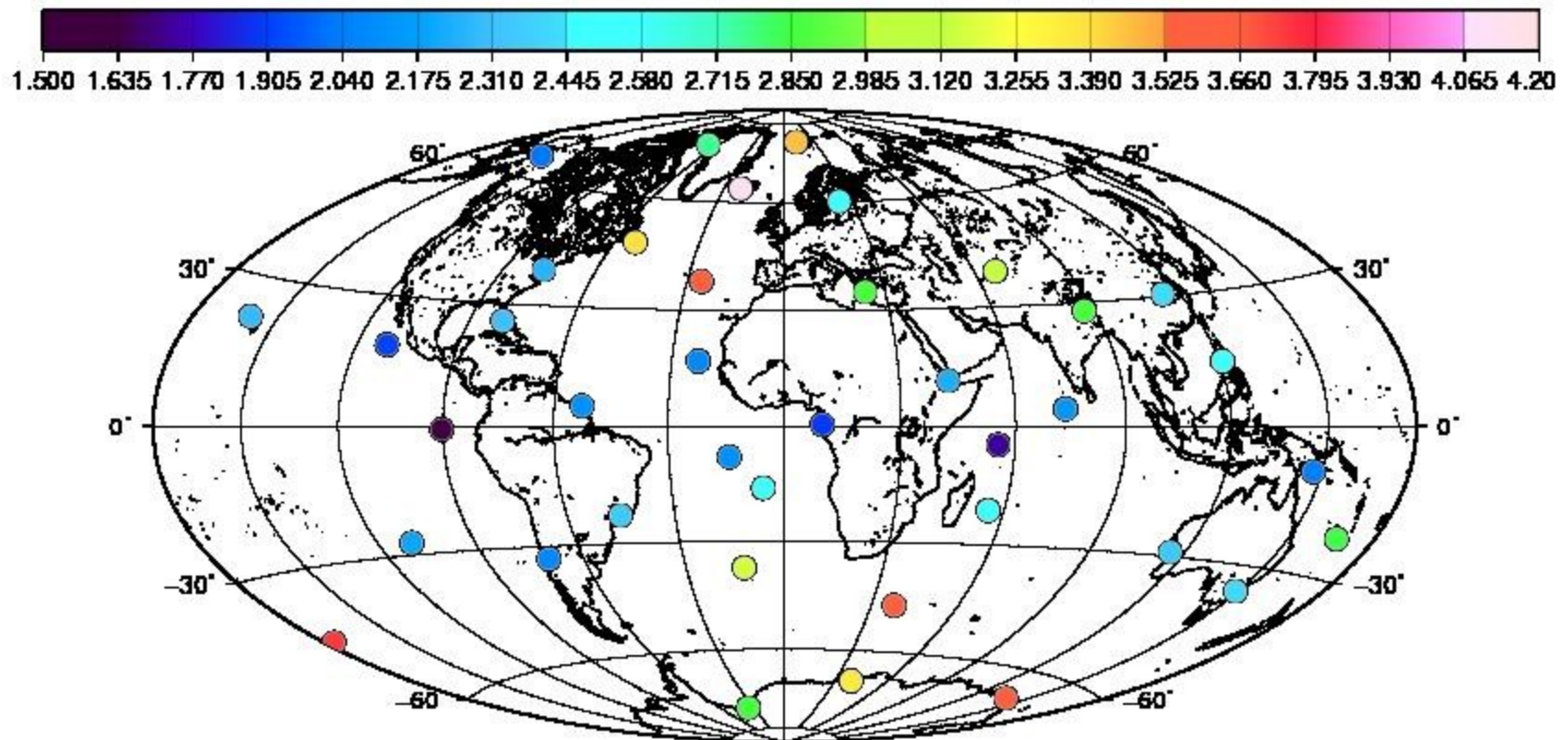


*Many thanks to Tonie Van Dam and to Jean-Paul Boy for their help validating the GEODYN implementation!!*



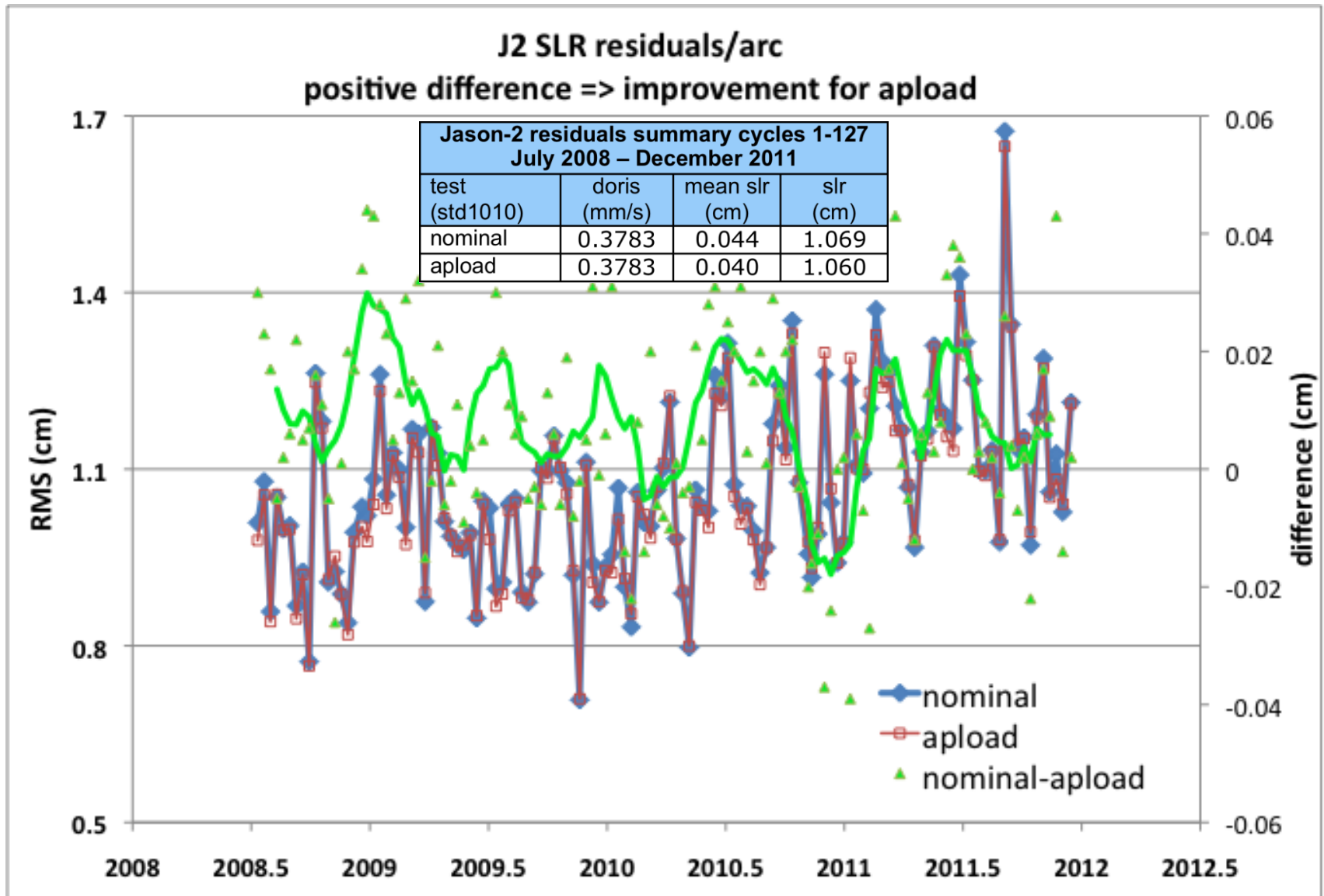
# Atmospheric loading (apload) displacement on average varies from about 1-5 mm RMS by station

apload RMS (mm) for 39 DORIS stations tracking Jason-2 cycles 1-57





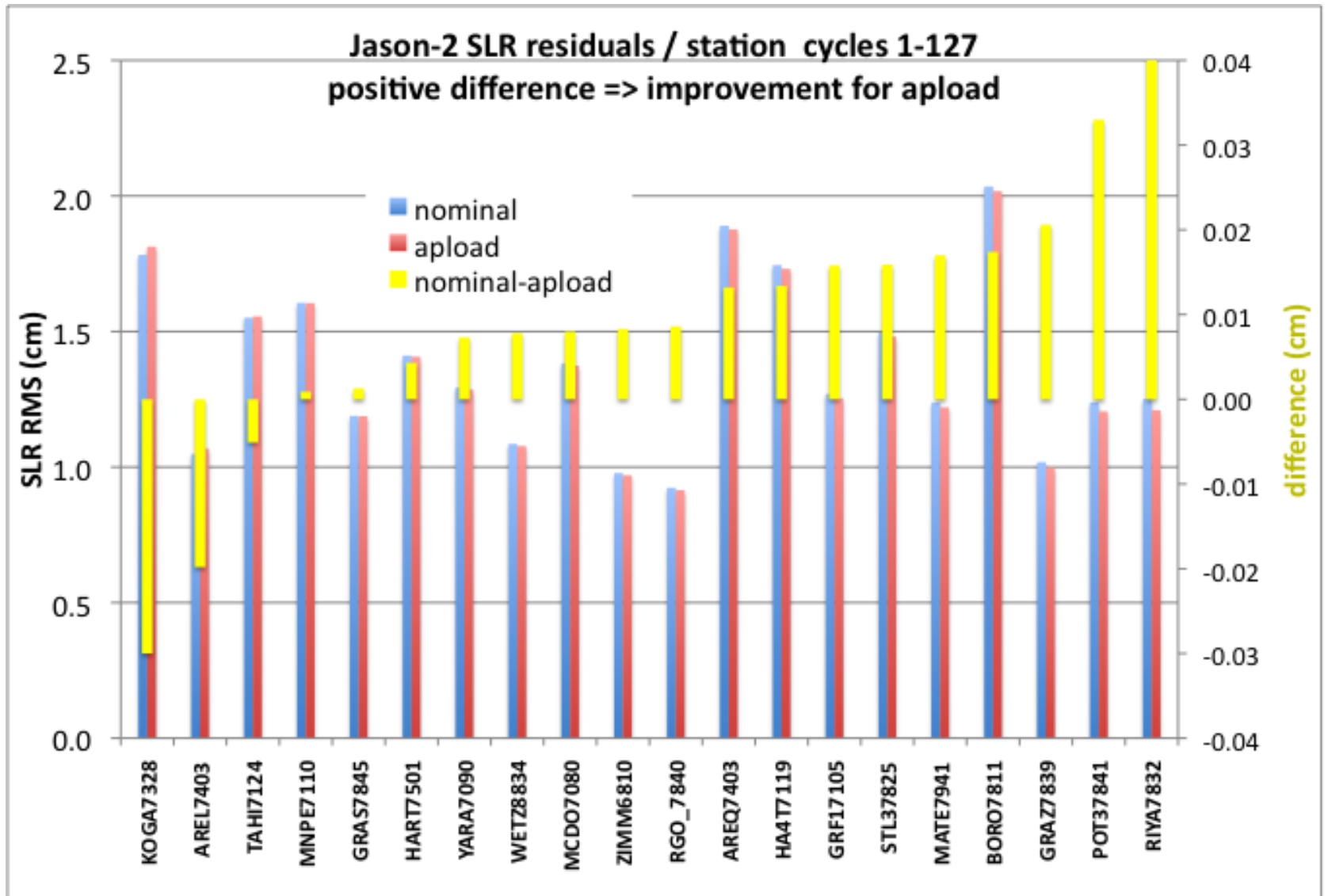
# SLR residuals improve with aupload, DORIS residuals not sensitive





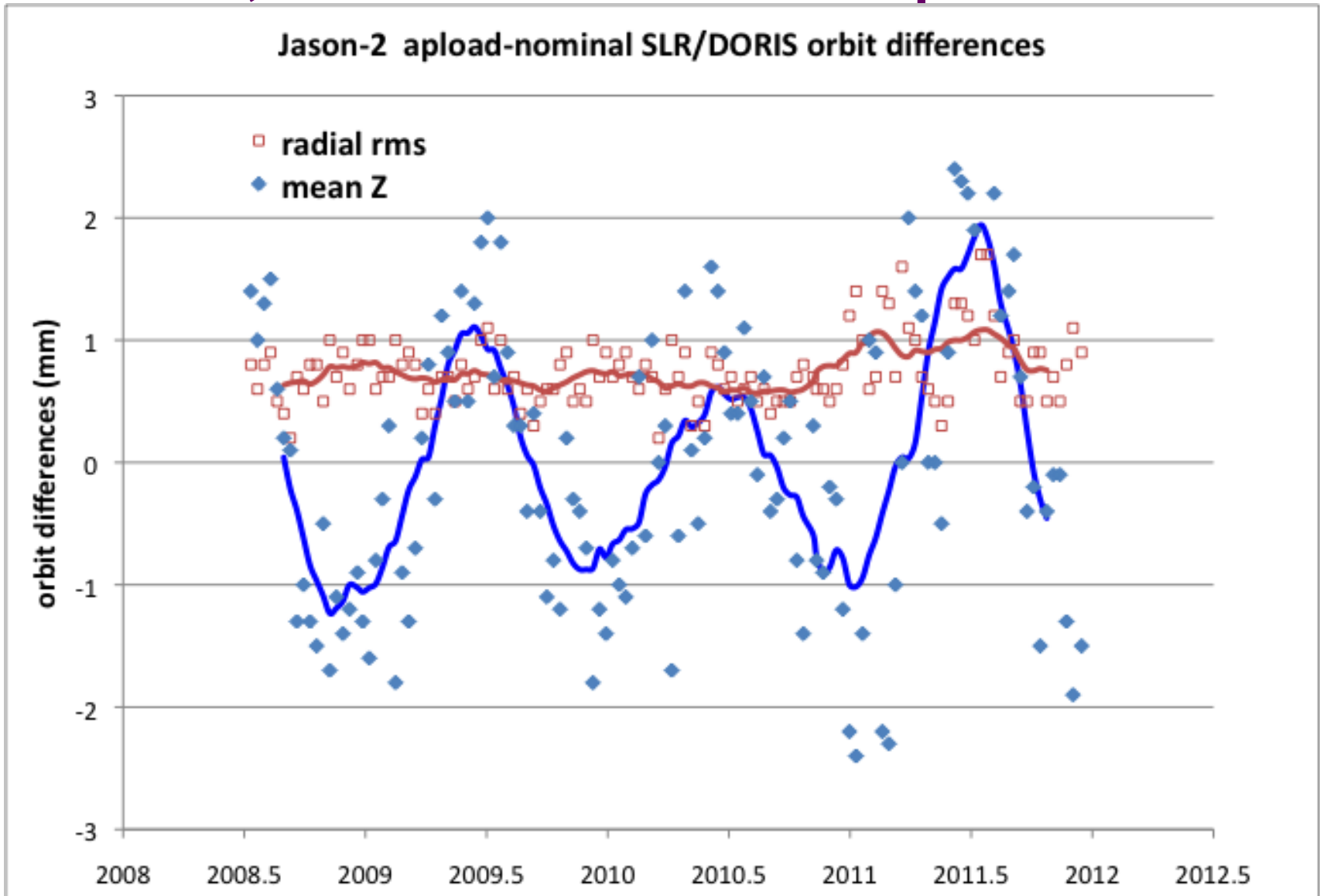


# SLR residuals improve for most stations





# apload effect on SLR/DORIS orbits is small, with annual 1-2 mm amplitude in Z





# New GSFC GSC DORIS weekly station solutions – gscwd13

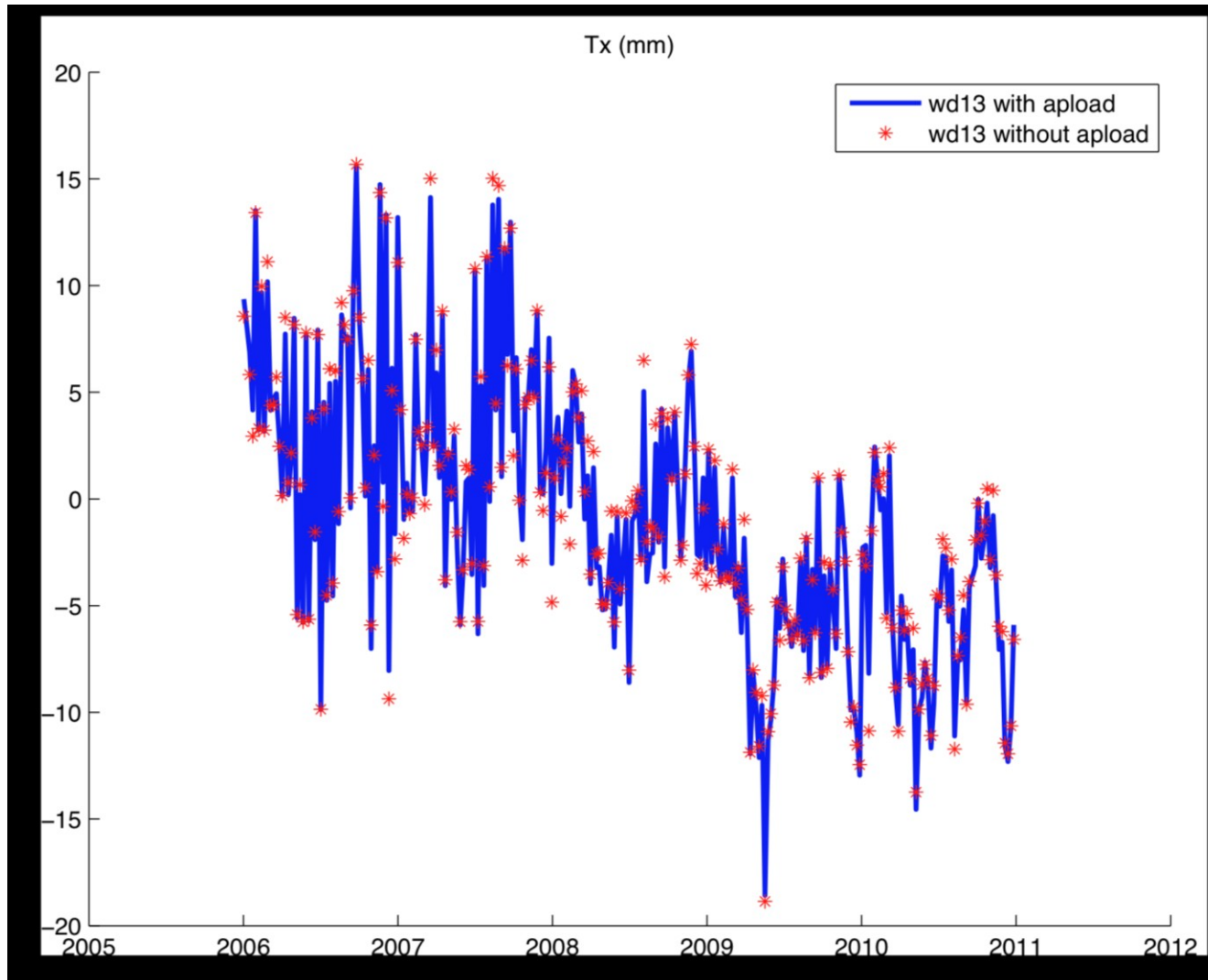
- Data to DORIS satellites are updated from the operational gscwd12 processing.
- New GSFC POD standards, std1201, are applied which include GOCO2S\_fit (Gravity Model), GOT4.8, ocean pole tide, GOT4.8 ocean loading, GMF/Saastamoinen/GPT instead of EIGEN-GL04S1/GOT4.7, Niell/Hopfield/GPT.
- All available satellites used to form weekly station-only solutions with SOLVE (weakly constrained). Satellites include SPOT2 (through 2009), SPOT4, SPOT5, ENVISAT, Jason2 (after July 2008), Cryosat2 (after June 2010).
- The baseline run is done without atmospheric loading and will be designated gscwd13. It will form basis of new operational series and is prelude to reprocessing & model updates for next ITRF.
- The atmospheric loading is applied on top of the gscwd13 modeling.
- Both SINEX series will be submitted to the IERS in response to the IERS Call (Toni Van Dam, Xavier Collilieux).



# DORIS weekly GSFC station solutions

## Helmert transfer to DPOD2008\_1.9

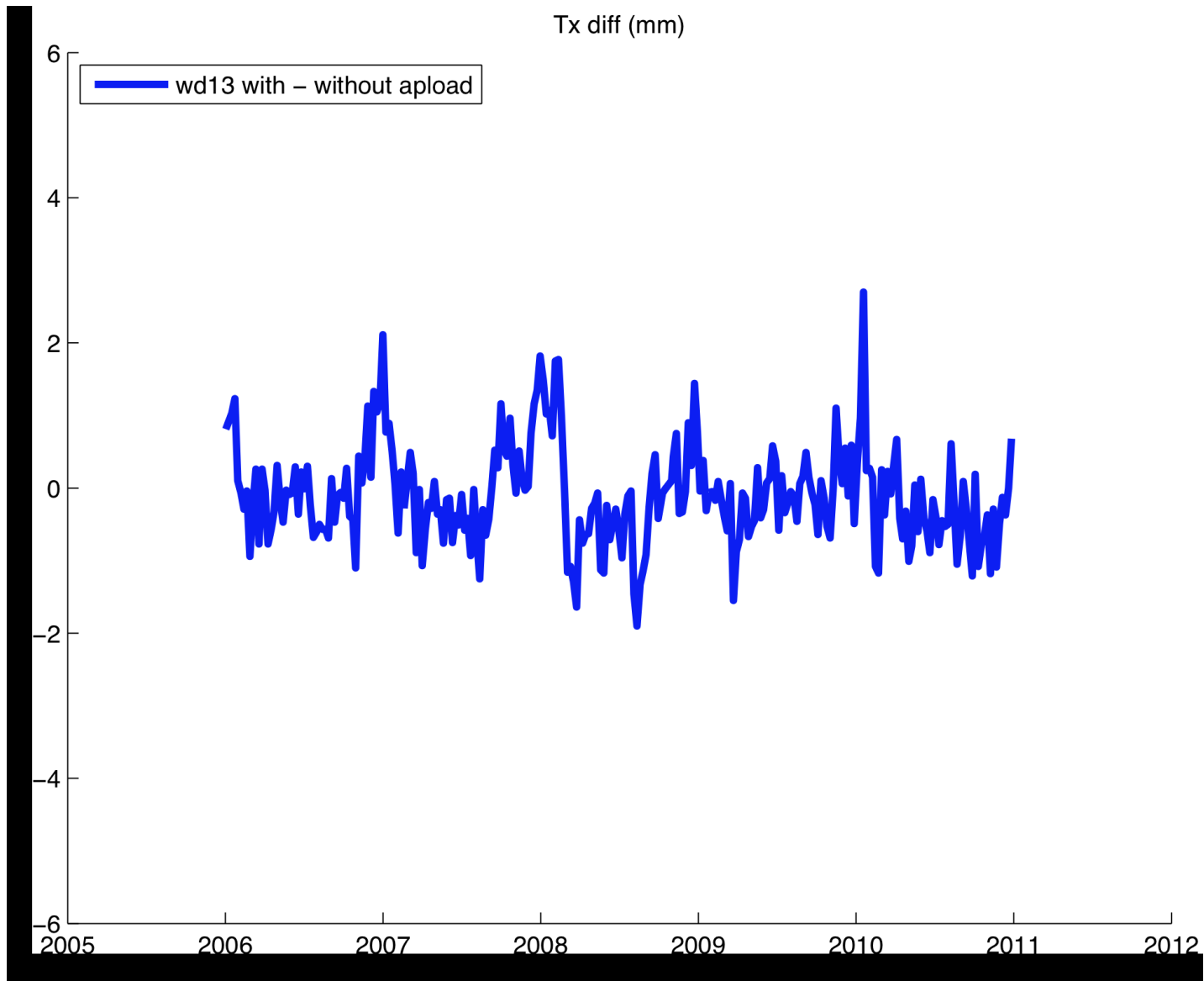
Helmert translation in X (mm)





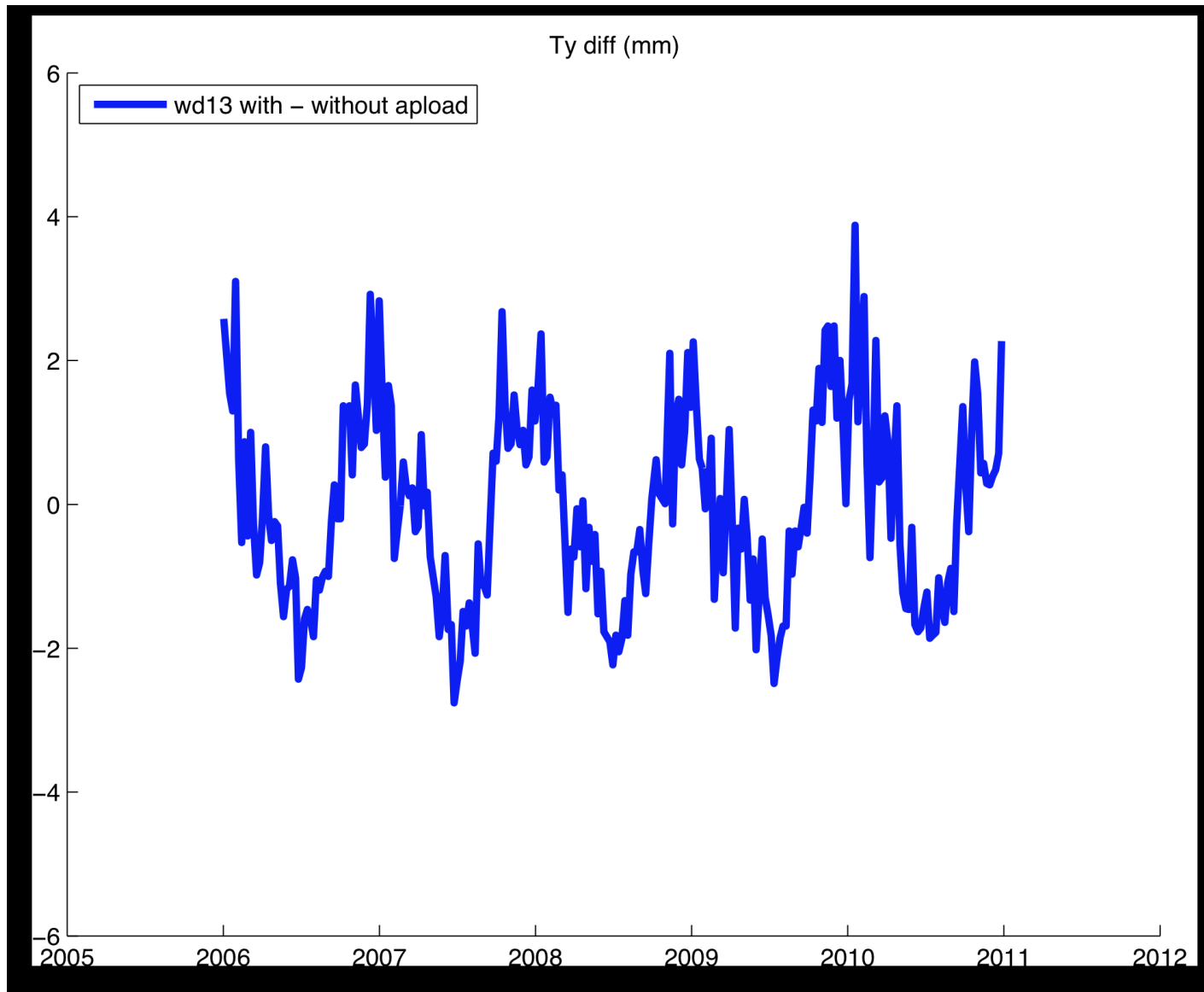


# Difference apload-nominal Helmert X (mm)



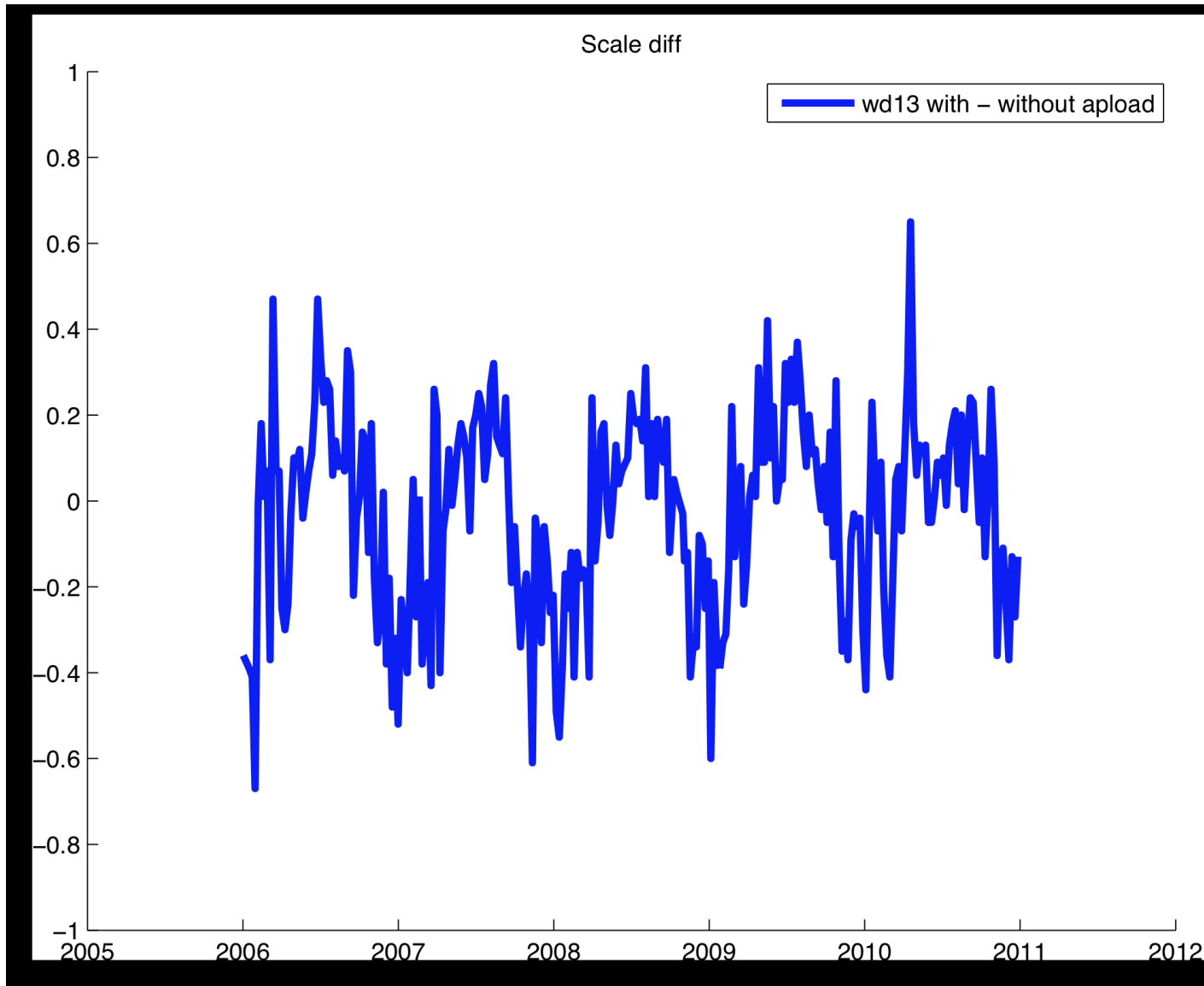


# Difference apload-nominal Helmert Y (mm)





# Difference apload-nominal Helmert Scale (mm)





## Summary - aupload

**Atmospheric station loading (aupload) based on 6-hour ECMWF pressure data has been implemented in GEODYN and evaluated with SLR and DORIS processing.**

- a) Jason-2 SLR residuals show a small, but consistent improvement over most stations.**
- b) Jason-2 SLR/DORIS orbits show a 1-2 mm annual amplitude in Z**
- c) DORIS gscwd13 station solution Helmert parameter differences show strong annual signals in Y of 2 mm amplitude and in scale of 0.4 mm amplitude (0.06 ppb).**
- d) DORIS gscwd13 station solution with and without aupload will be submitted to the IERS.**



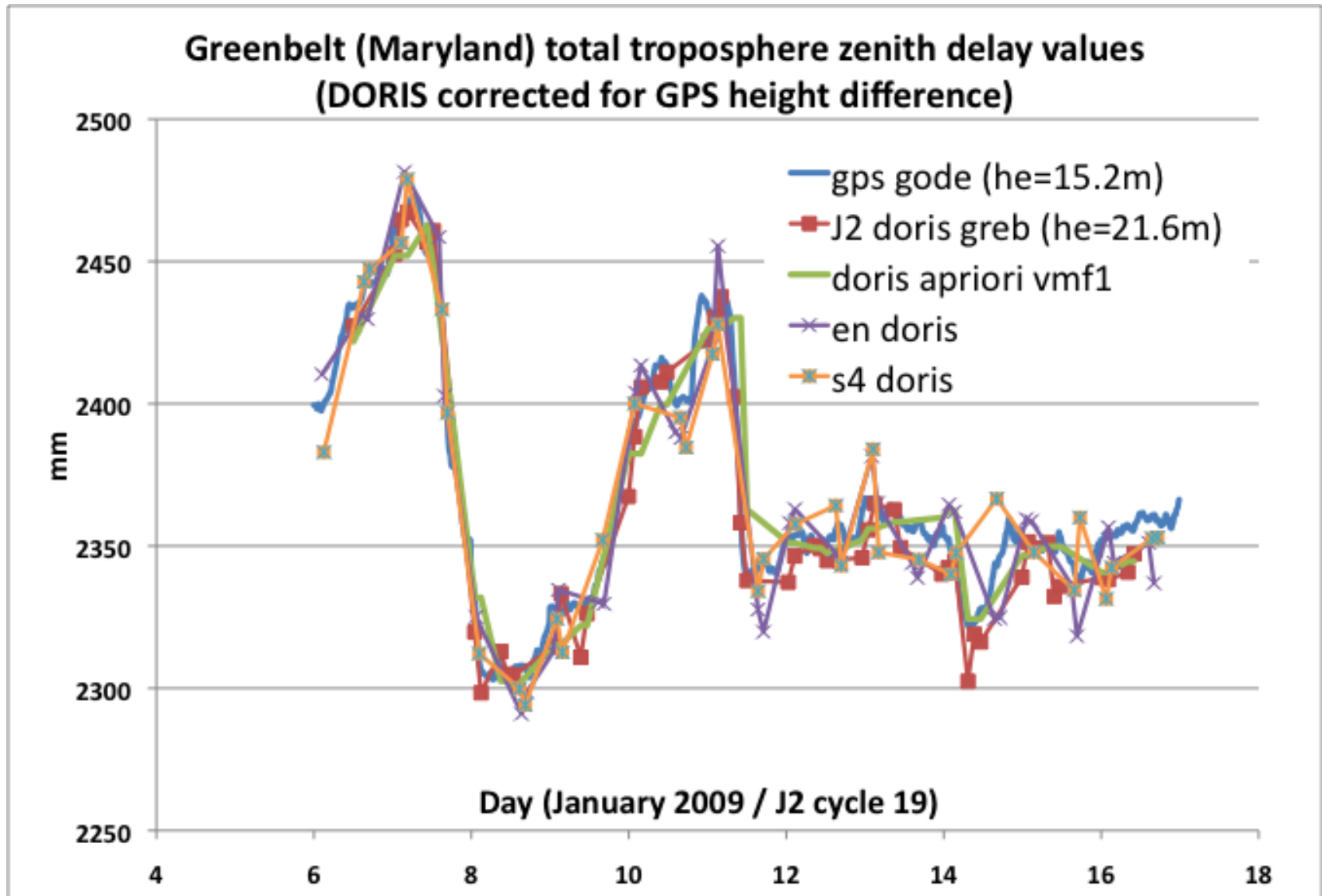
# Improved troposphere modeling - Outline

- The gridded Vienna Mapping Function (VMF1) troposphere refraction modeling capability has recently been implemented in GEODYN and is evaluated using DORIS. The gridded dry/wet zenith delay heights are reduced to the station height following Kouba (2007).
- DORIS VMF1 total zenith delay estimates compared to GPS.
- Jason-2 POD used to compare:
  - VMF1
  - GMF/GPT/Saastamoinen
  - Niell/GPT/Hopfield



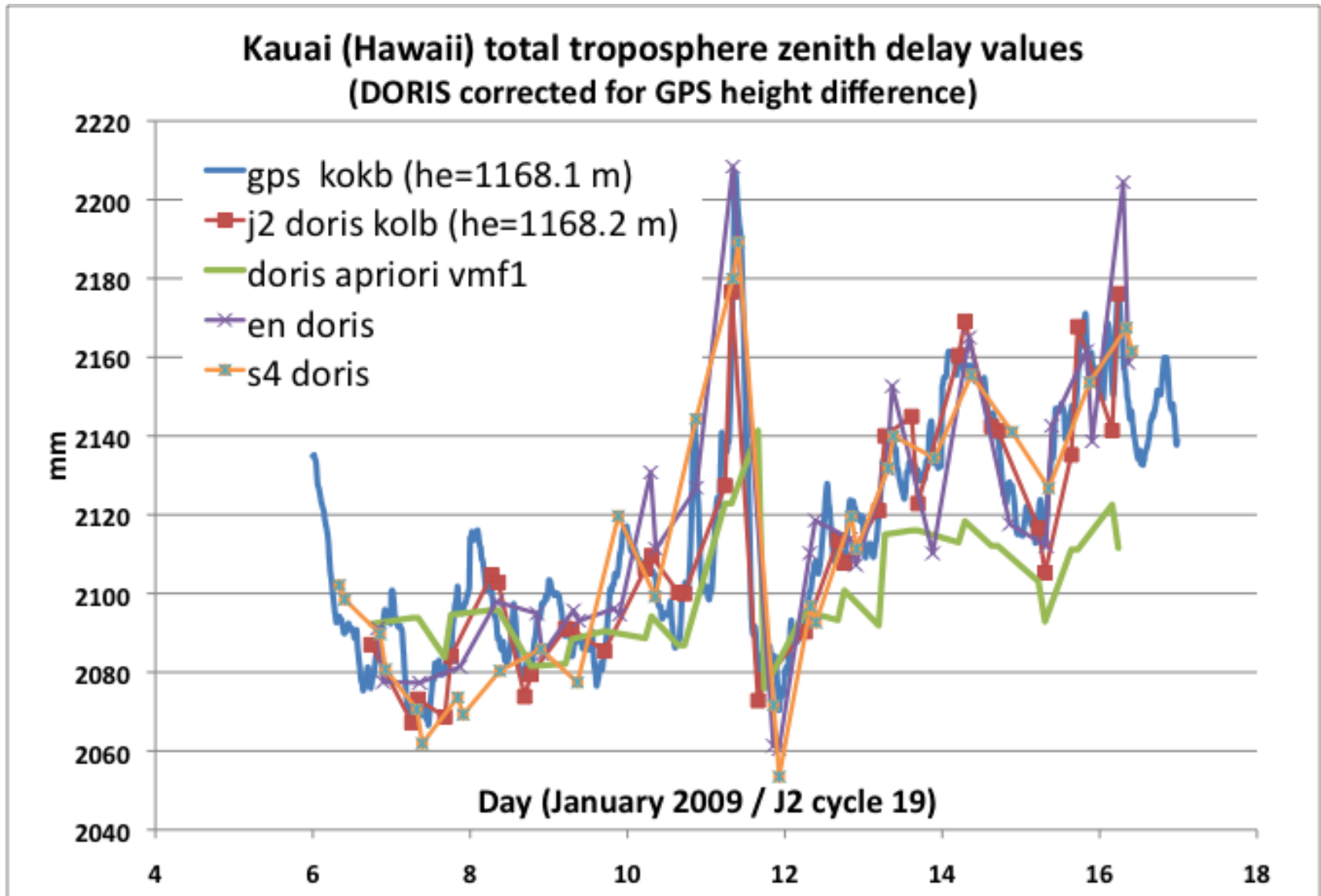


# Total Zenith Delay Estimate – Greenbelt (total VMF1 = a priori dry + estimated wet)



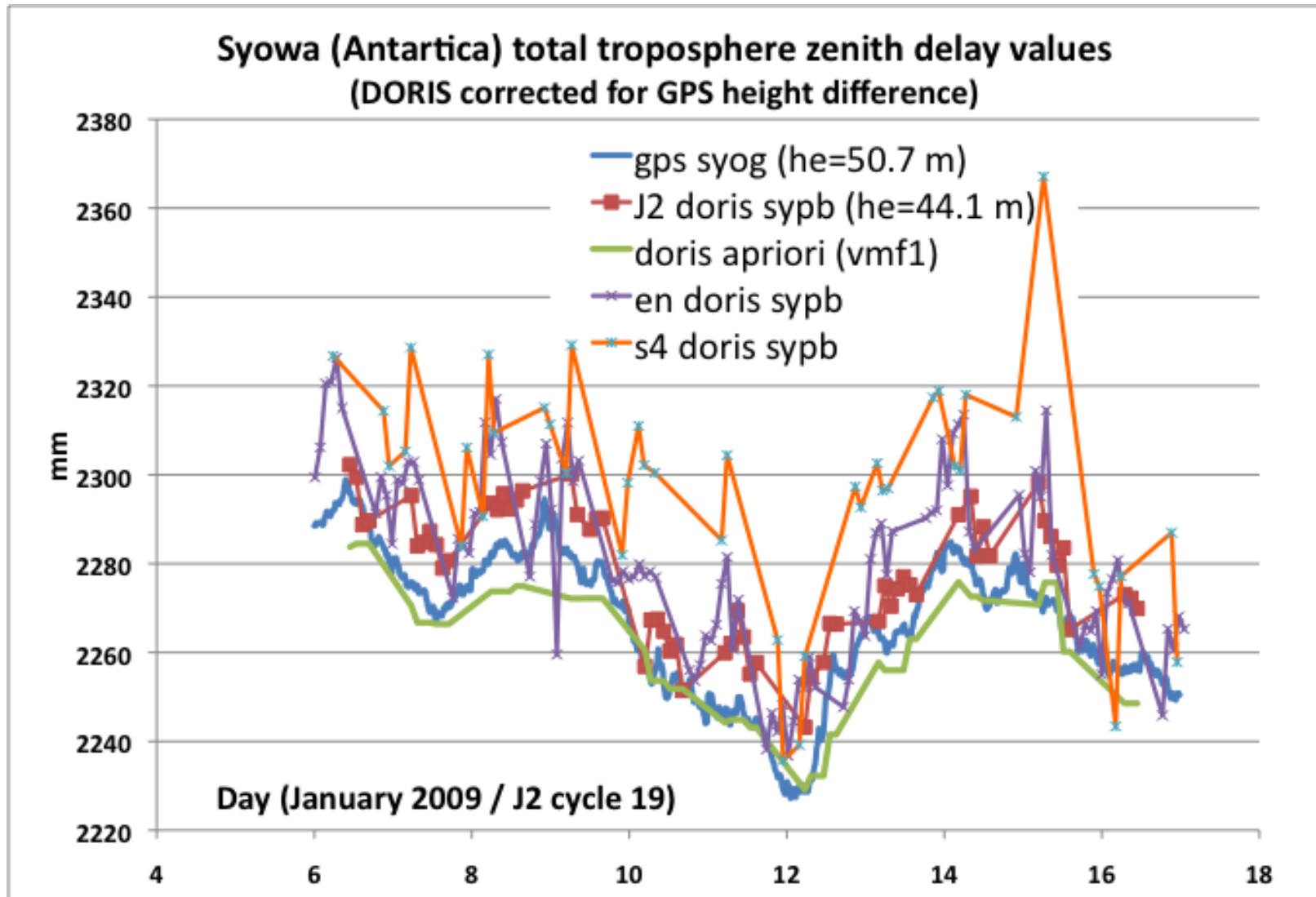


# Total Zenith Delay Estimate – Kauai (total VMF1 = a priori dry + estimated wet)



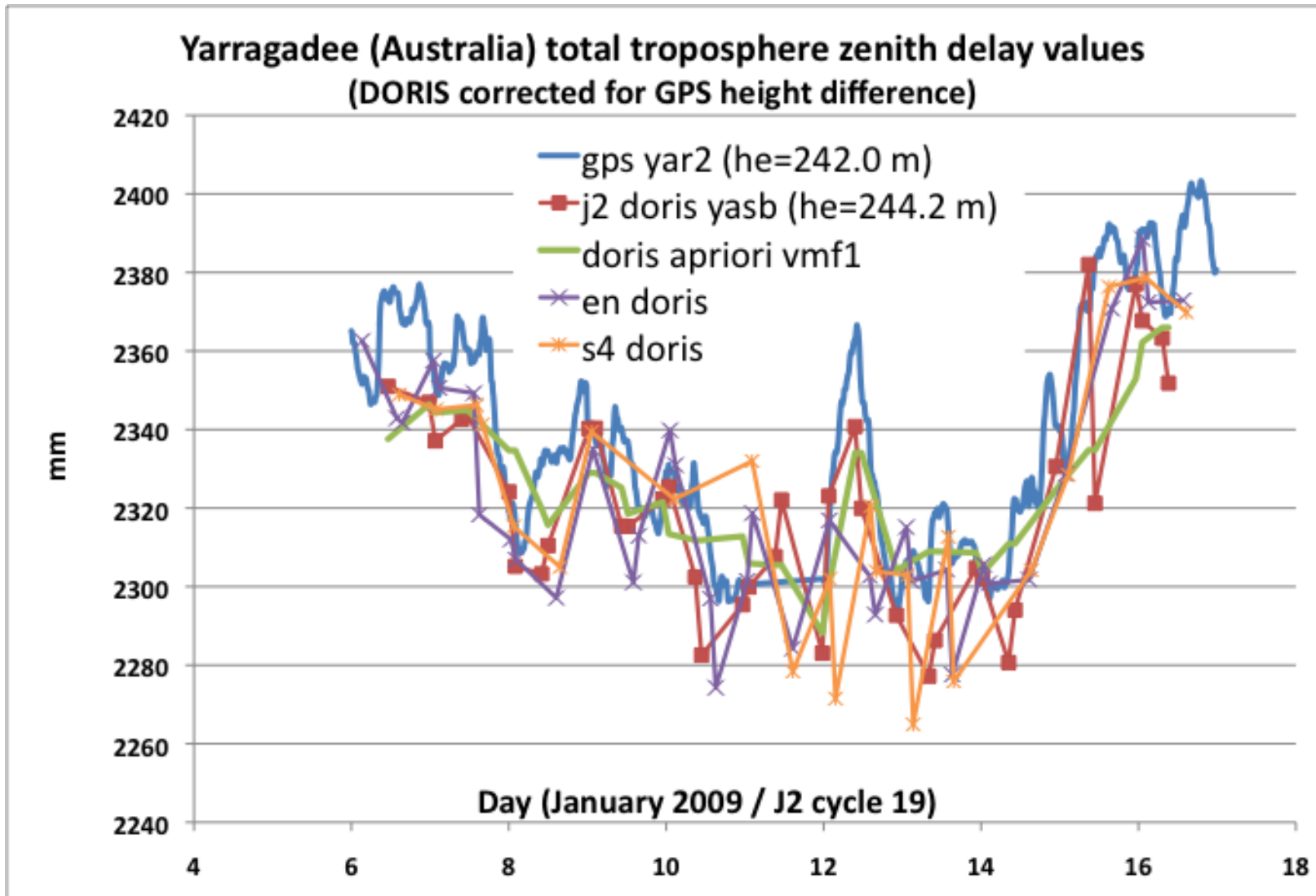


# Total Zenith Delay Estimate – Syowa (total VMF1 = a priori dry + estimated wet)



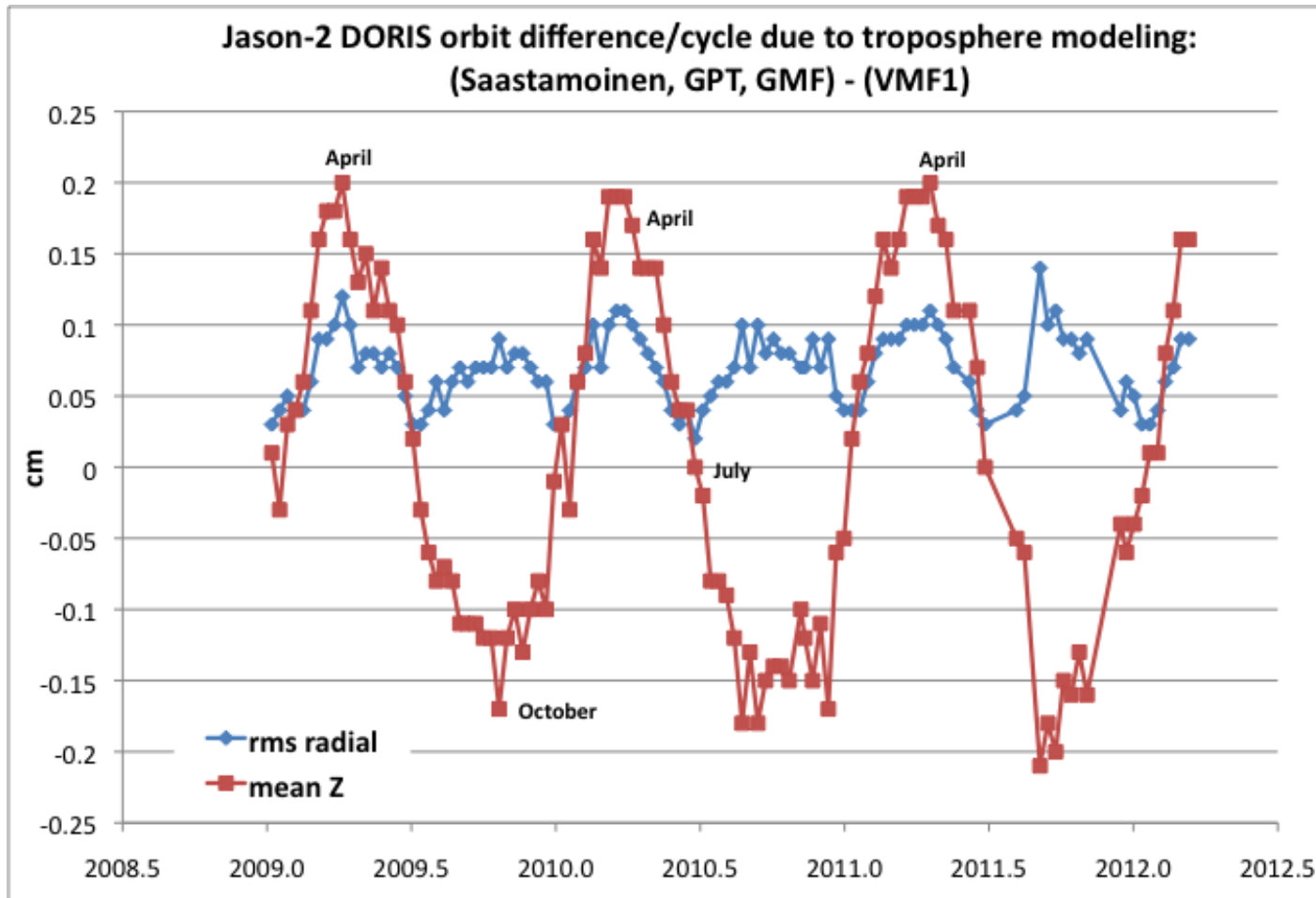


# Total Zenith Delay Estimate – Yarragadee (total VMF1 = a priori dry + estimated wet)





# VMF1 impact on Jason-2 Orbit



- 1 mm RMS signal in radial orbit differences;
- Annual signal in Z orbit differences – peak-to-peak of up to 3-4 mm.



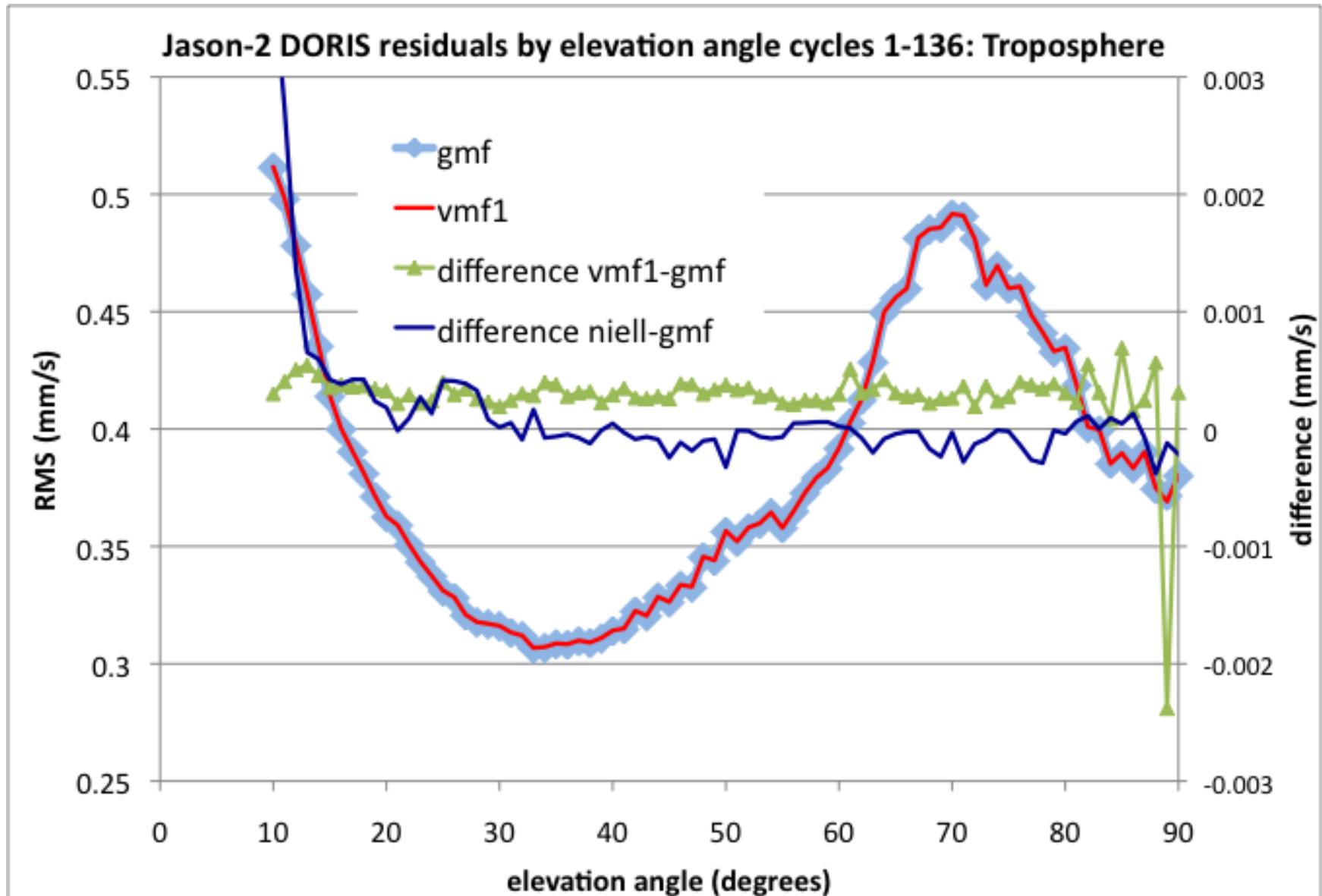


# DORIS-only Jason-2 POD performance

<b>Jason-2 residuals summary cycles 1-136: Troposphere July 2008 – April 2012</b>			
test (DORIS-only) mapping/zenith/meteo.	doris (mm/s)	independent data	
		slr (cm)	xover (cm)
Niell/ Hopfield/ GPT	0.3781	1.781	5.505
GMF/ Saastamoinen/ GPT	0.3777	1.849	5.504
VMF1 gridded	0.3781	1.837	5.505

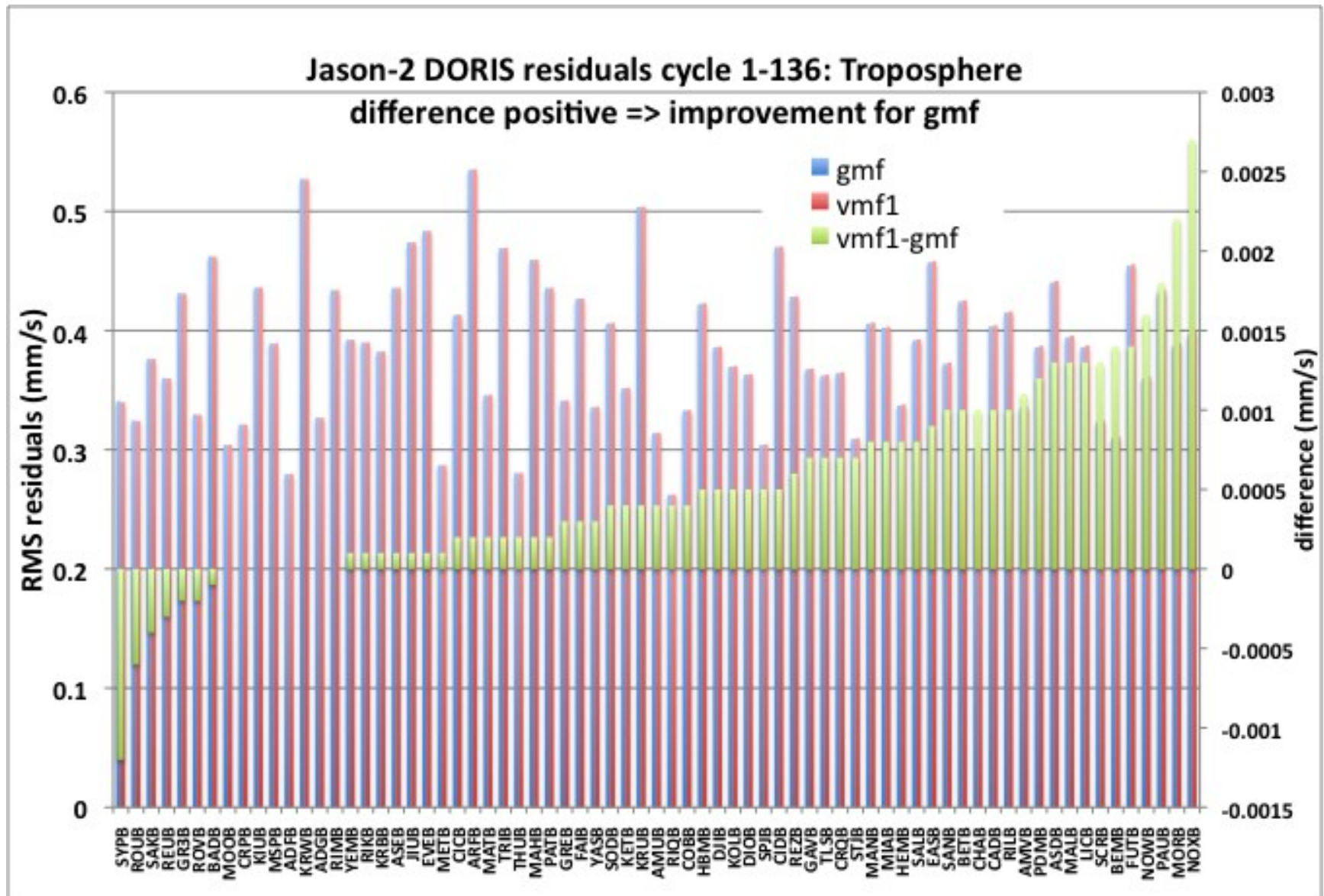


# DORIS residuals by elevation angle



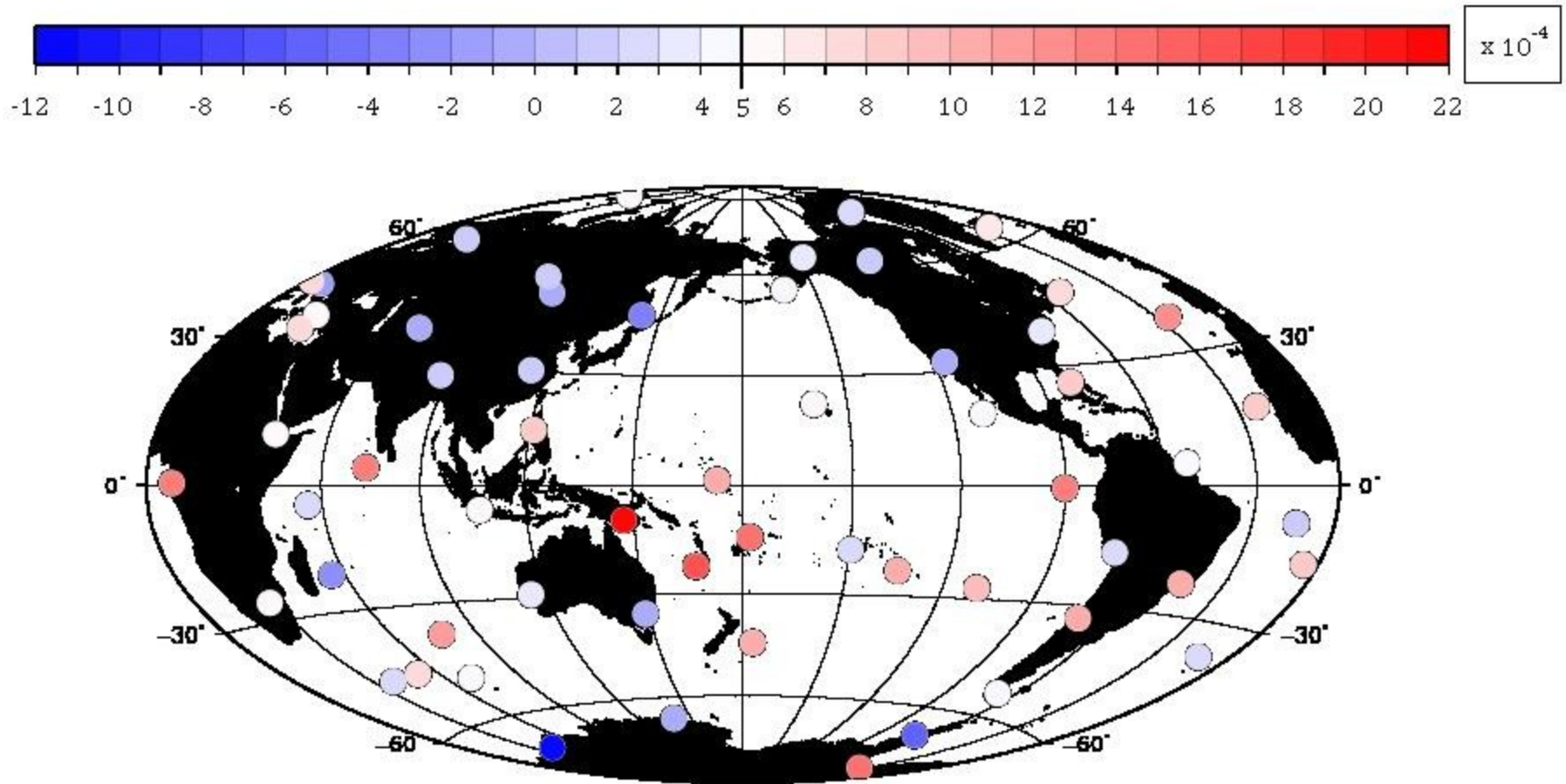


# DORIS residuals by station



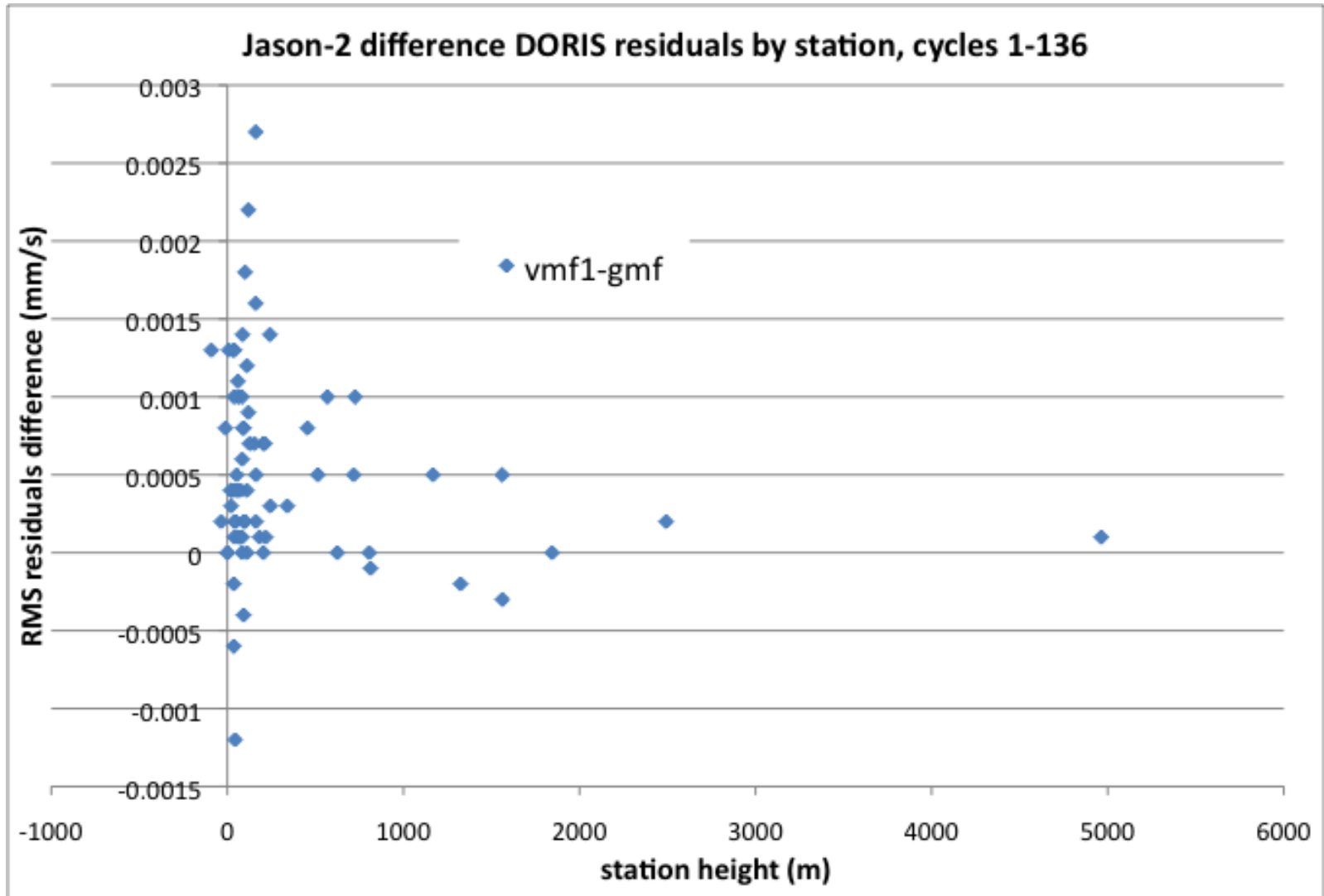


# DORIS (vmf1-gmf) difference residuals by station location





# DORIS (vmf1-gmf) difference residuals by station height







## Summary - Troposphere

**VMF1 gridded capability has been implemented in GEODYN and evaluated with DORIS processing.**

- a) VMF1 zenith delay DORIS estimates compare to those from GPS in a sanity check**
- b) Jason-2 DORIS residuals are very slightly, but consistently degraded using VMF1 compared to GMF/GPT.**
- c) VMF1 will be further evaluated with station solution comparison which includes atmospheric station loading and also using GPS data.**
- d) Other gridded VMF1 station height reduction approximations will be tested such as Steigenberger et al. (2009)**

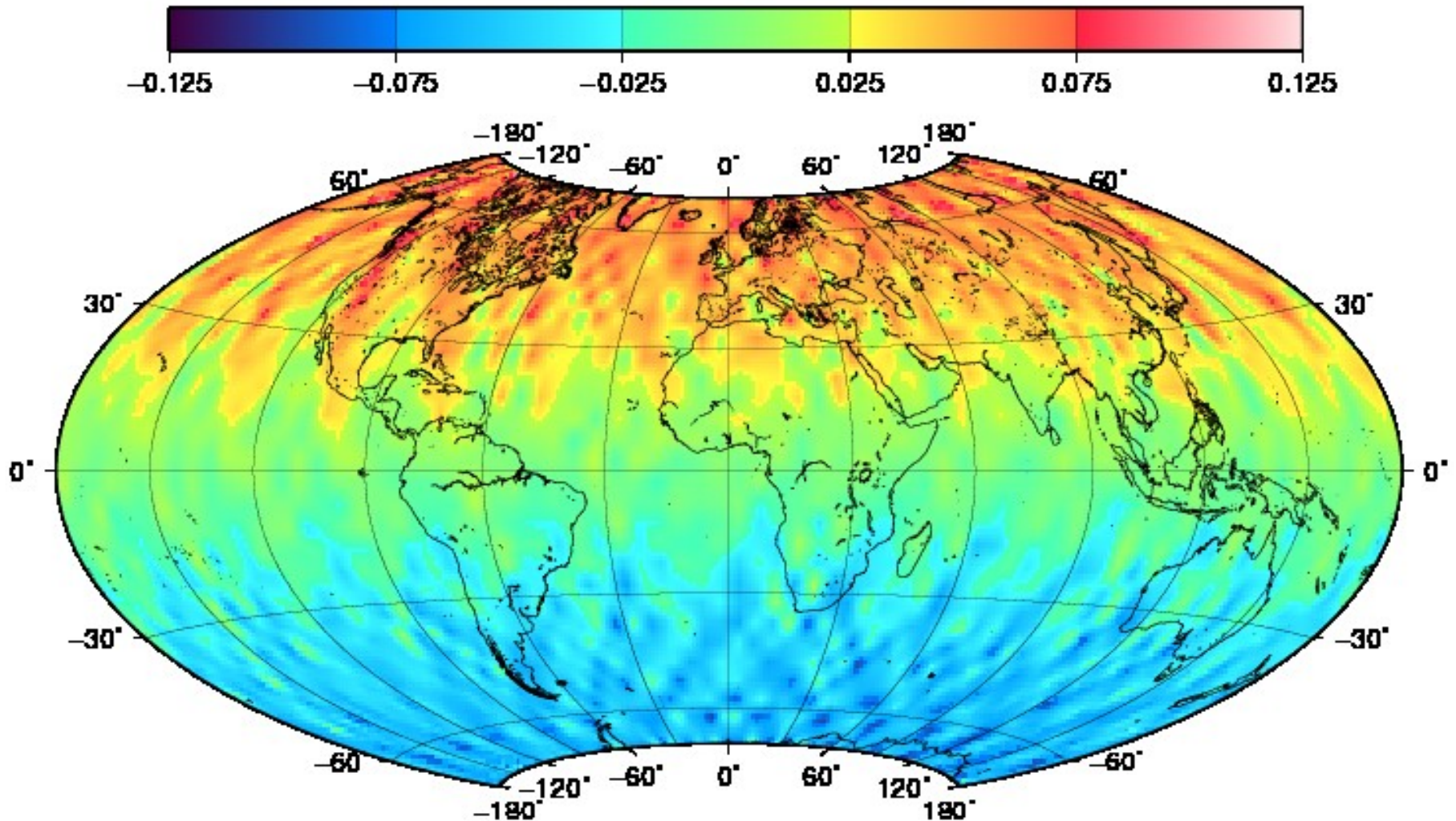


# BACKUP





# Jason-2 nominal-apload mean radial orbit differences cycles 1-57 (mm)

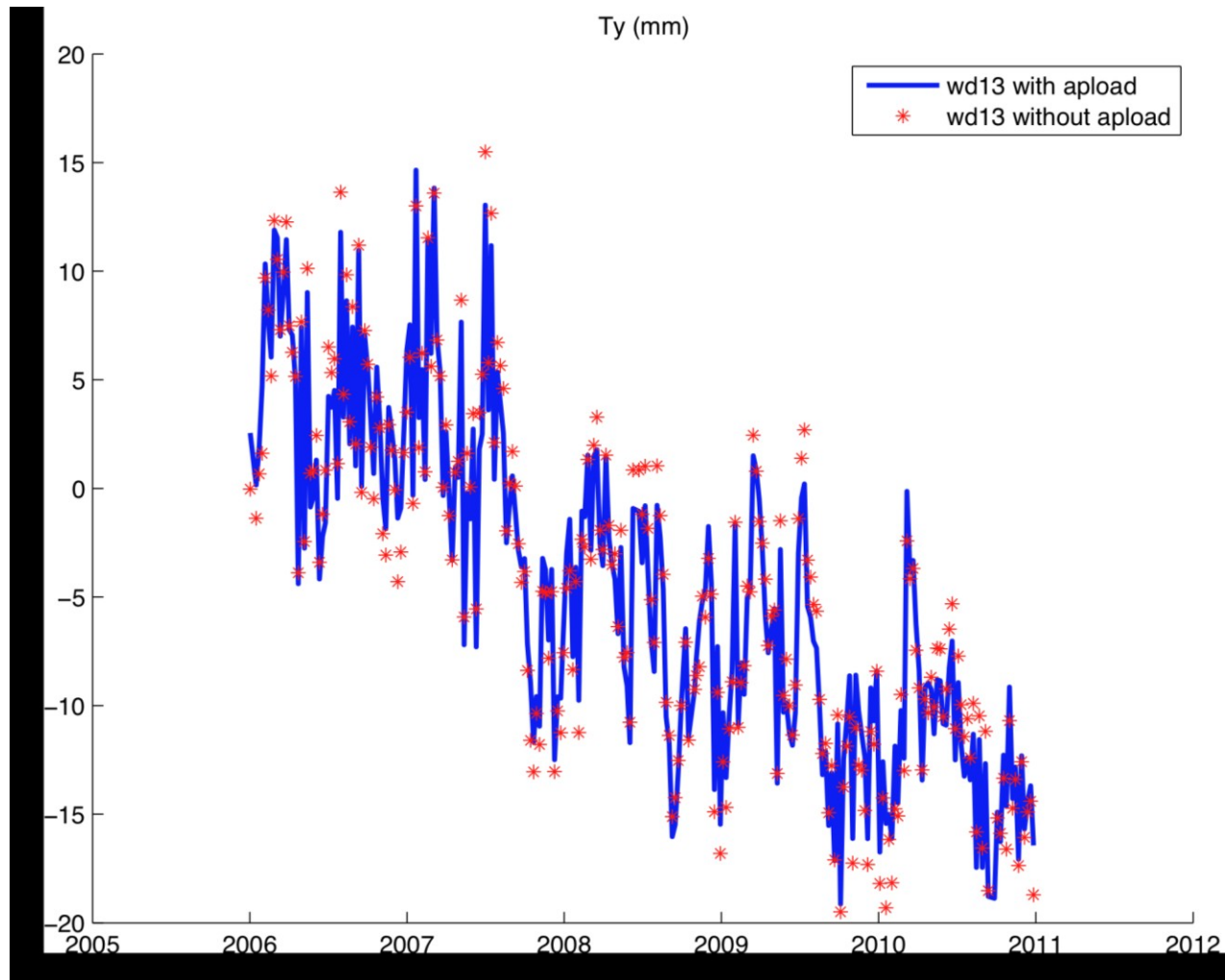




# DORIS weekly GSFC station solutions

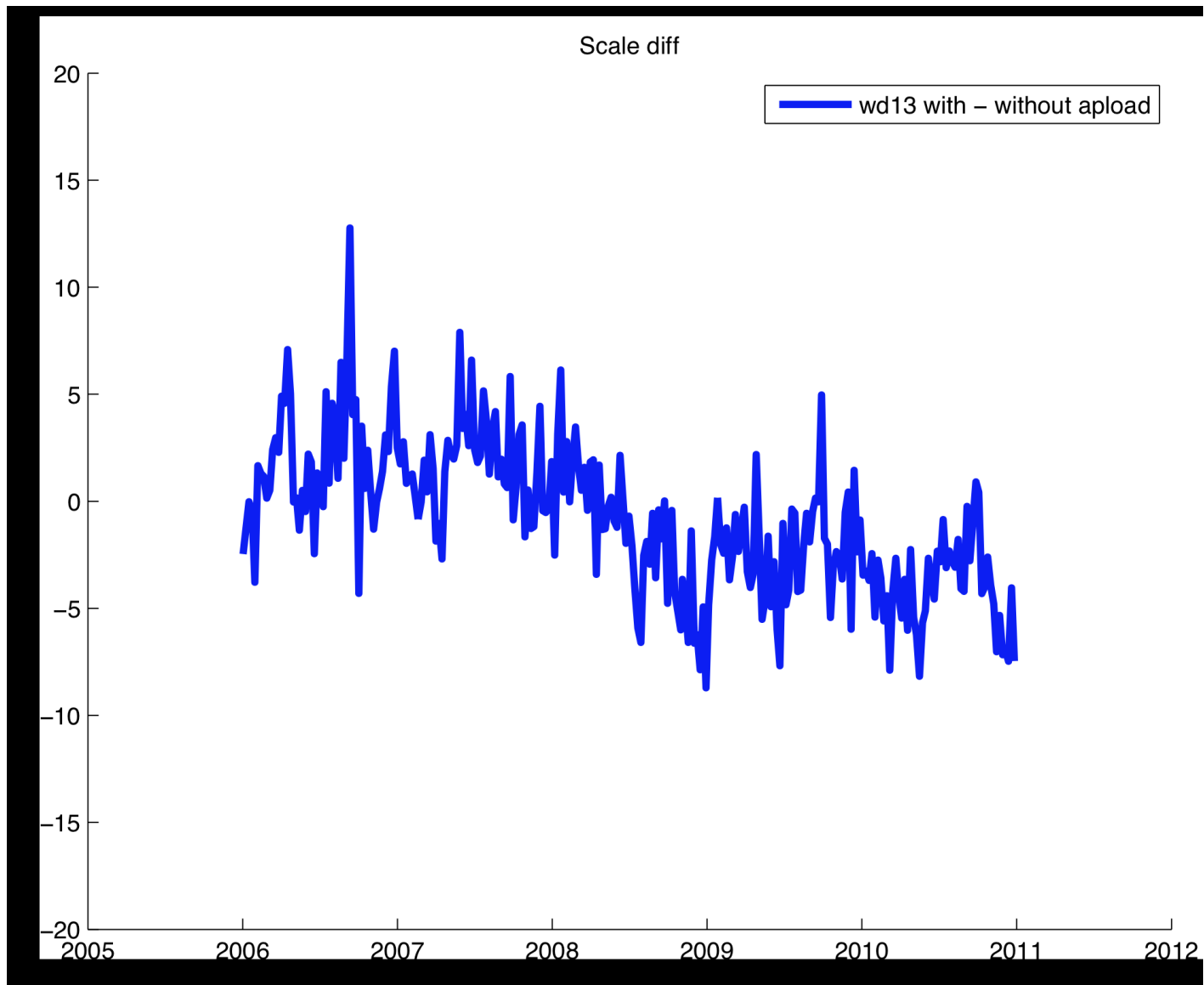
## Helmert transfer to DPOD2008\_1.9

### Helmert translation in Y (mm)





# Difference apload-nominal Helmert Z (mm)

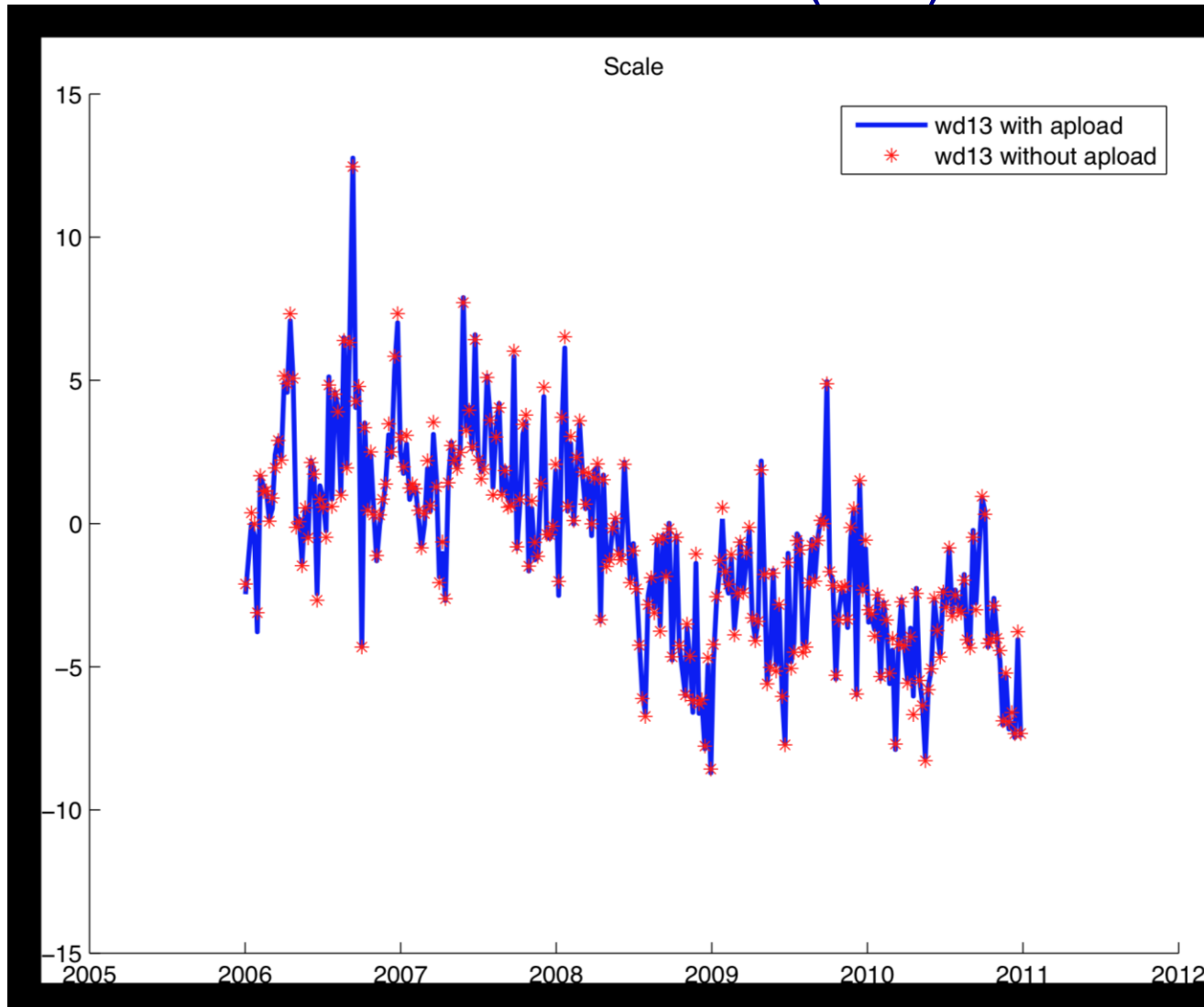






# DORIS weekly GSFC station solutions Helmert transfer to DPOD2008\_1.9

## Helmert Scale (mm)





# Total Zenith Delay Estimate – summary (total VMF1 = a priori dry + estimated wet)

