

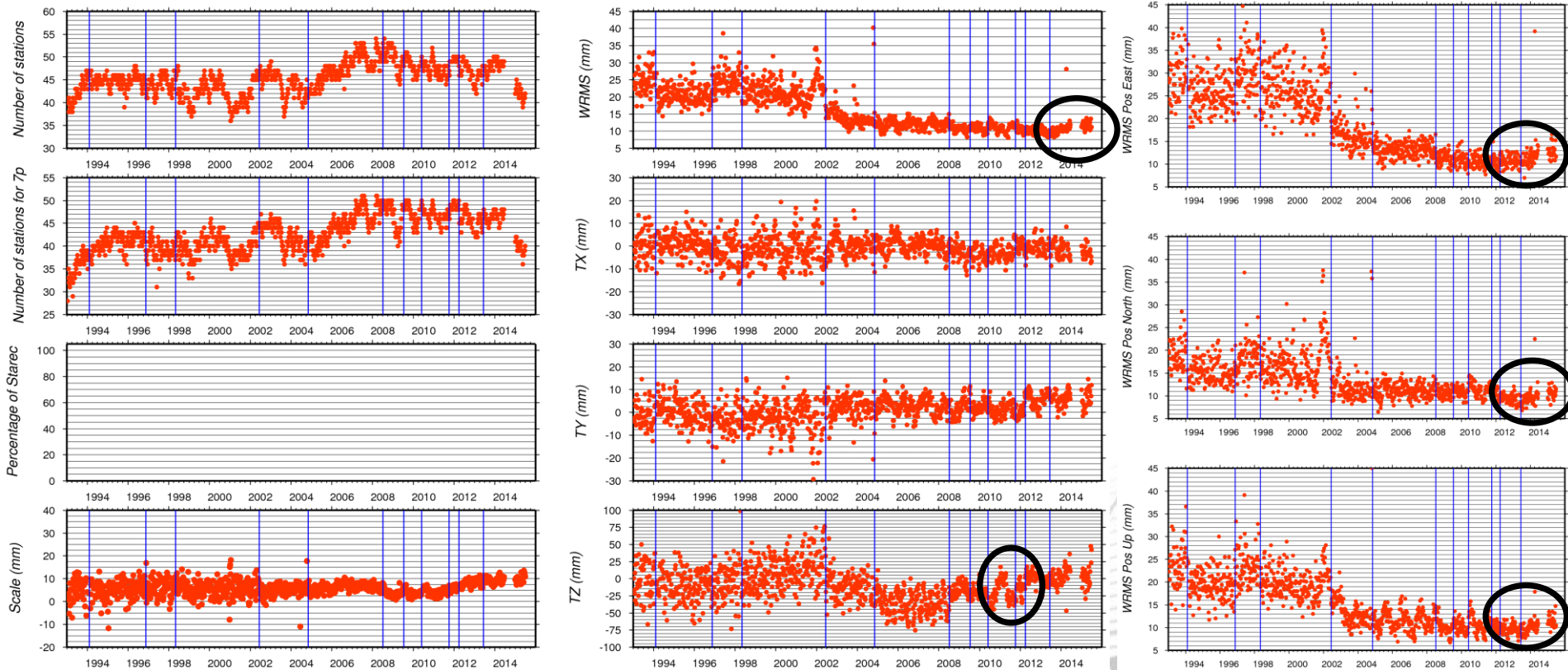


Status of the Routine Evaluation/Combination

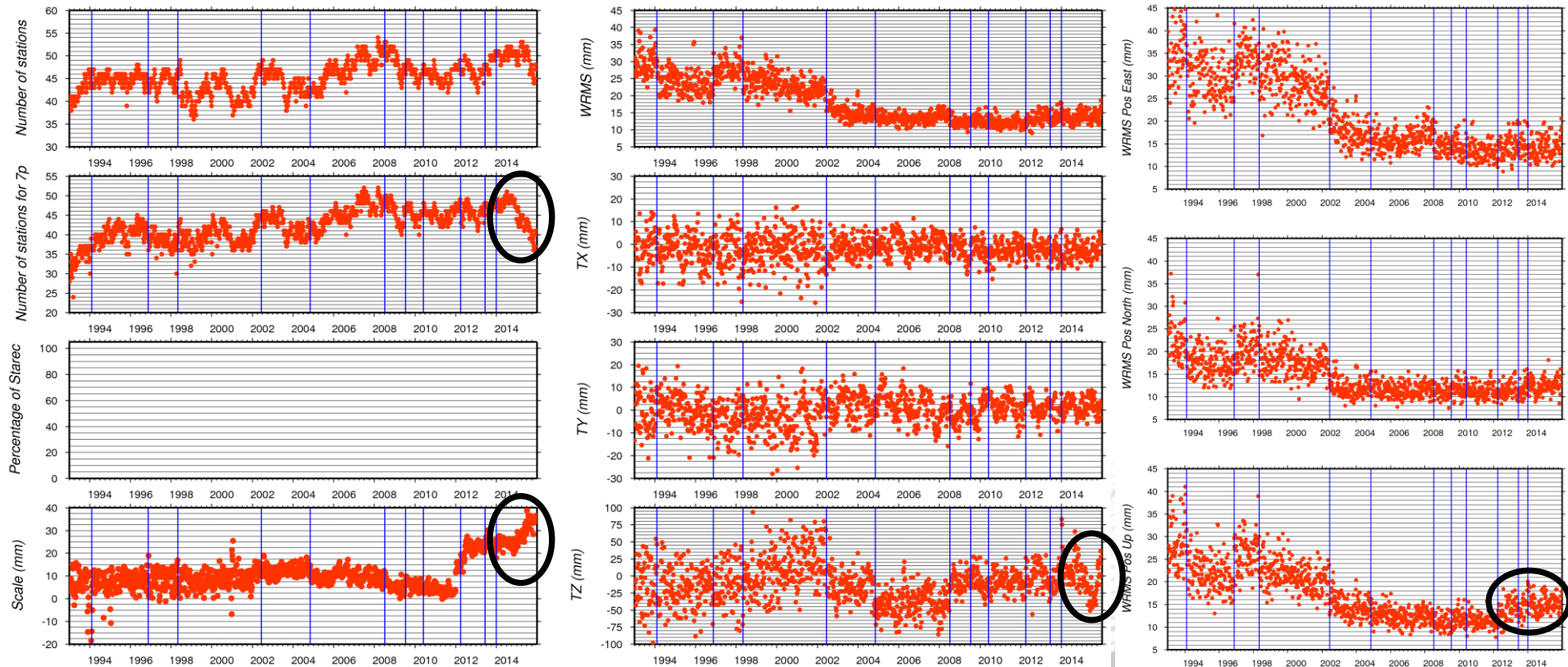
Guilhem Moreaux

AC	Series Nb	Time period	Comments
ESA	10	1993:003 – 2015:179	2014:166 – 2014:362 missing Not available at IDS Data Centers
GOP	43	1993:003 – 2015:354	
GRG	40	1993:003 – 2015:347	
GSC	26	1993:003 – 2015:361	
GSC	27	2013:076 – 2015:361	GSC 26 + Saral
IGN	15	1993:003 – 2015:354	
INA	08	1993:003 – 2014:362	
INA	10	1993:003 – 2015:354	INA 08 + Phase laws + HY-2A + Saral
IDS	09	1993:003 – 2014:362	ESA10 + GOP43/46 + GRG40 + GSC26+ IGN 15 + INA08 INA08 does not contribute to the combined scale After 2011:275, GOP and IGN do not contribute to the scale too.
IDS	11	1993:003 – 2015:354	ESA10 + GOP43 + GRG40 + GSC26/27 + IGN 15 + INA10 All the Acs contribute to the combined scale

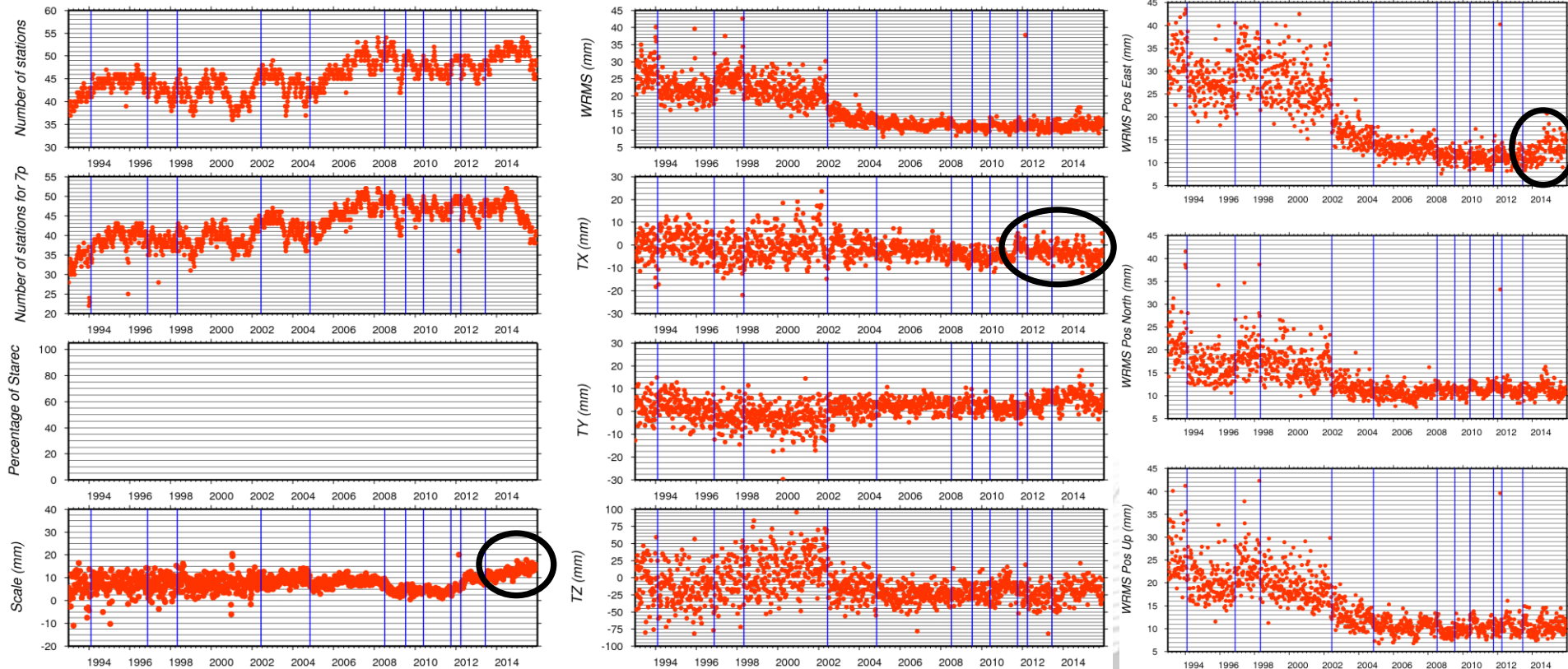
- **Evaluation wrt ITRF2014 with Post-Seismic Deformation correction.**
- **EOPs differences wrt preliminary version of the IERS C04 series.**



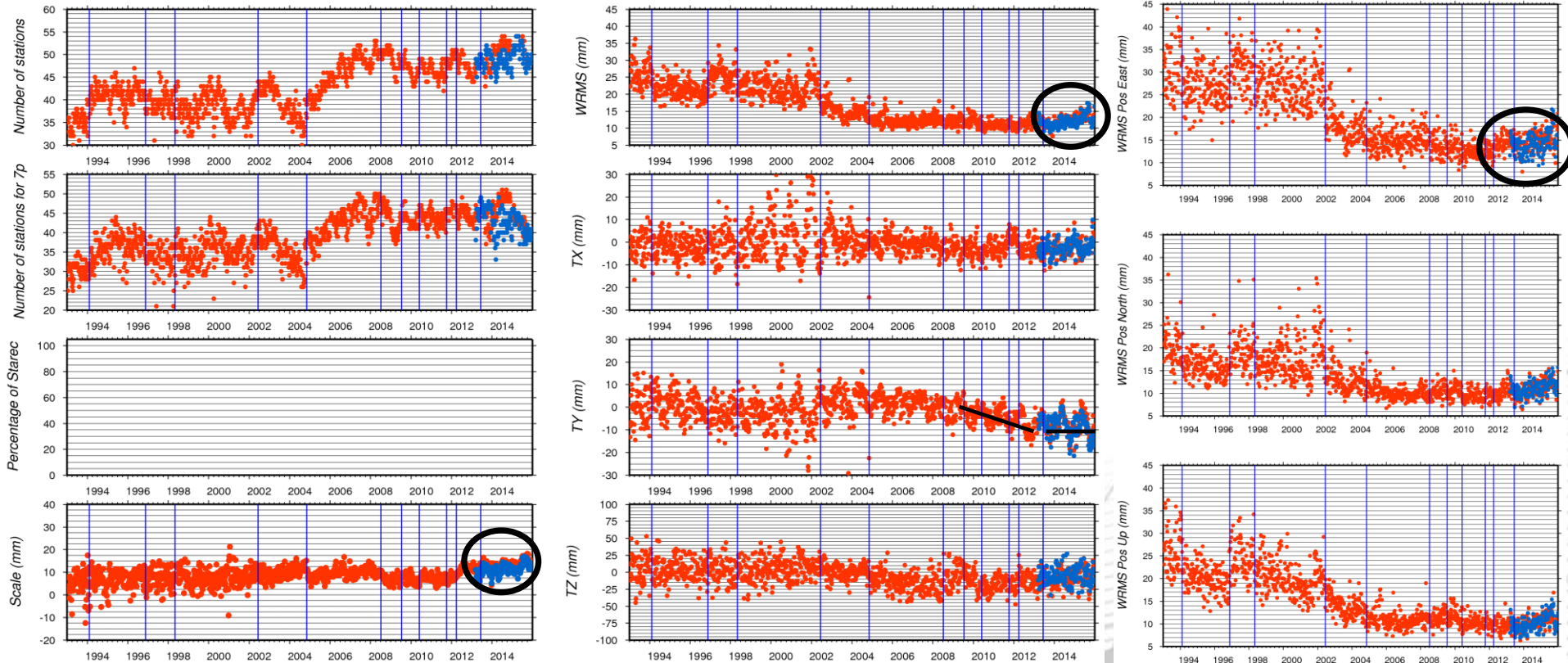
- Tz: 2011 peak is linked to the solar activity.
- WRMS: degradation in all the directions since end of SPOT4.



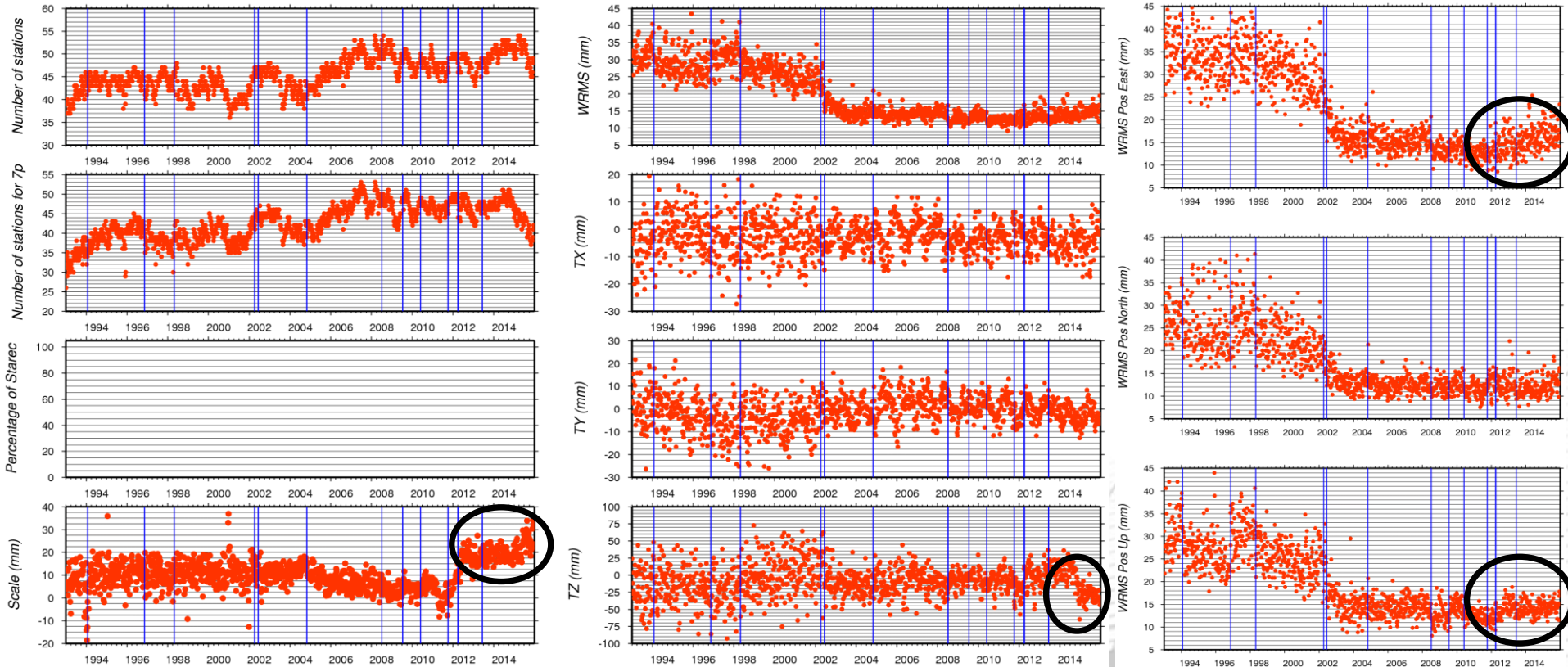
- Scale increase early 2015.
- WRMS: degradation in the up correlated to the scale increase in 2012.



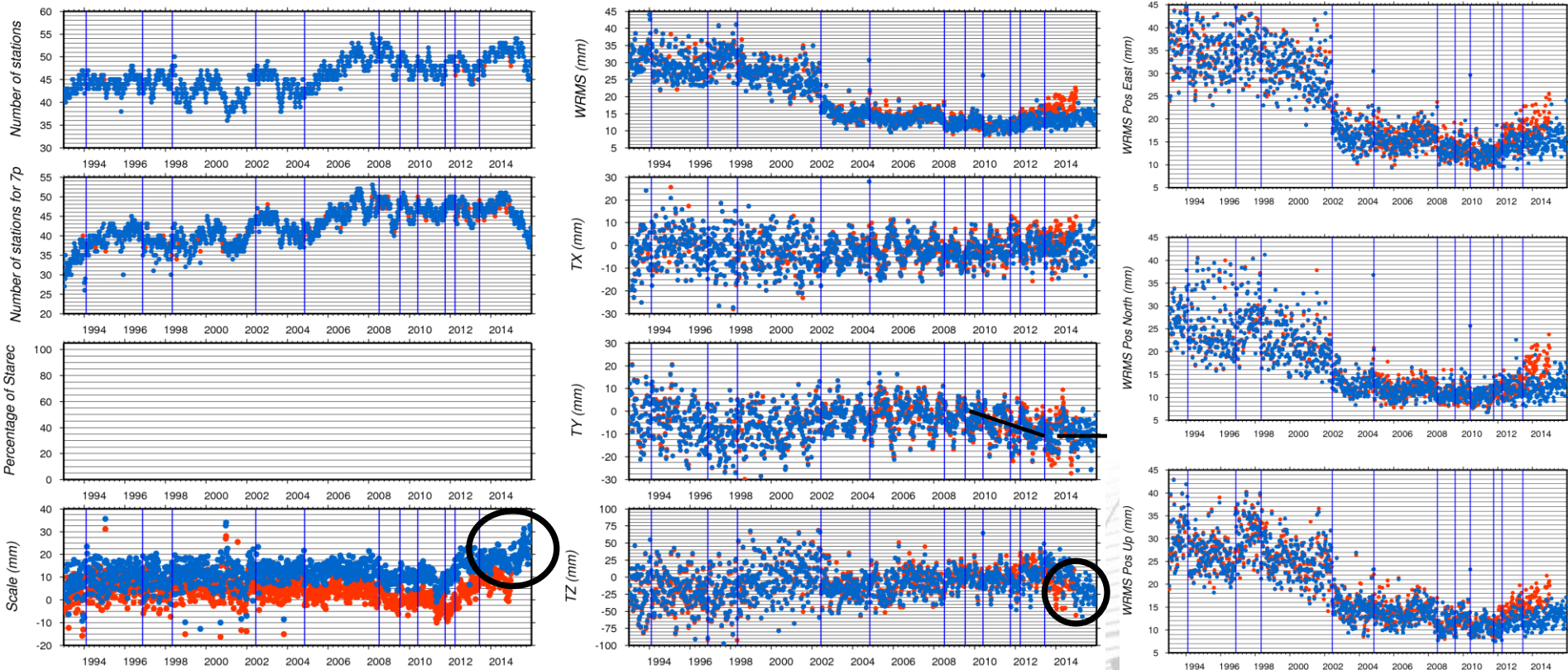
- Tx: discontinuity while Saral is added.
- Scale: linear increase since end of SPOT4.
- WRMS: degradation in the East direction since last quarter of 2014.



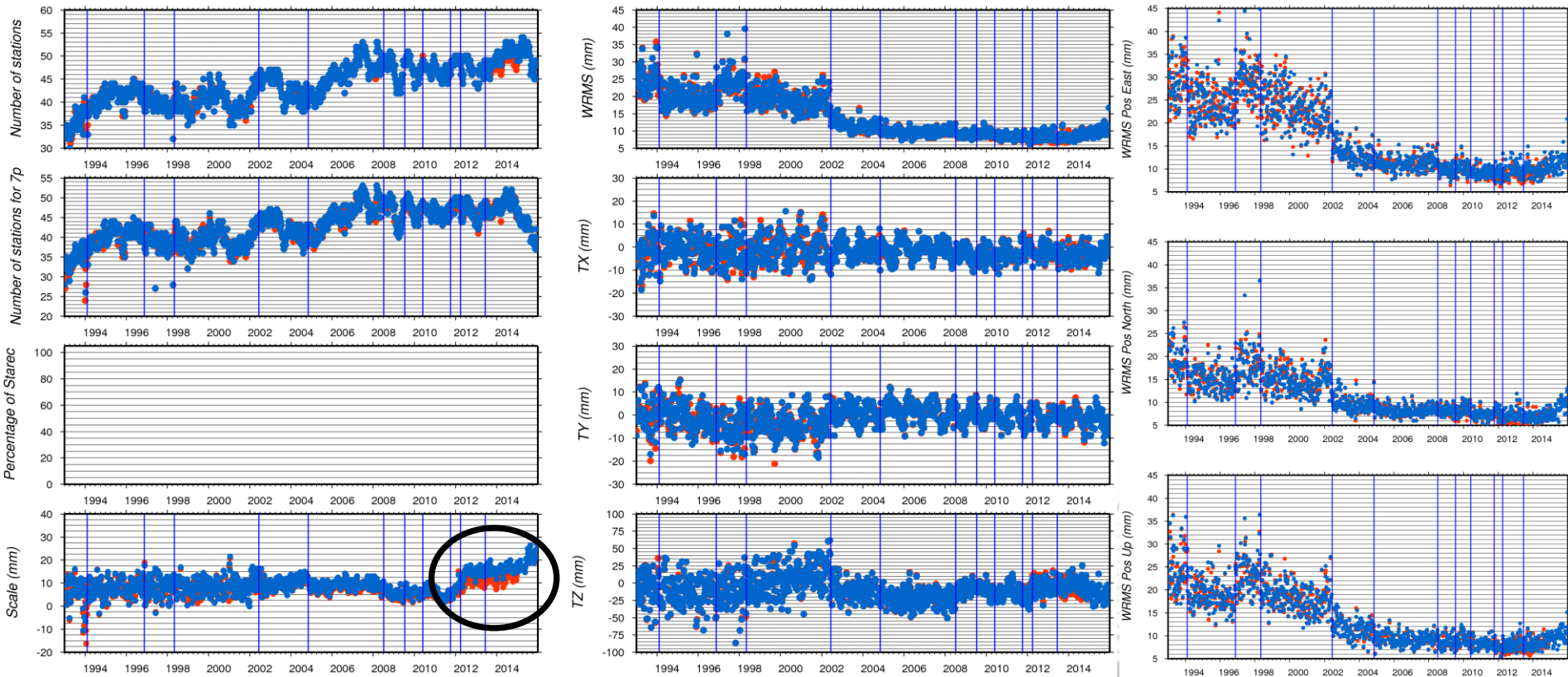
- GSC 27 performs slightly better than GSC 27 (scale, wrms).
- Ty: negative linear trend between end of SPOT2 and Saral start and stabilized since.
- WRMS:
 - degradation in East since end of Envisat.



- Scale: higher increase early 2012.
- Tz: discontinuity late 2014 – early 2015.
- WRMS:
 - degradation in Up since scale increase.
 - degradation in East since end of Envisat.

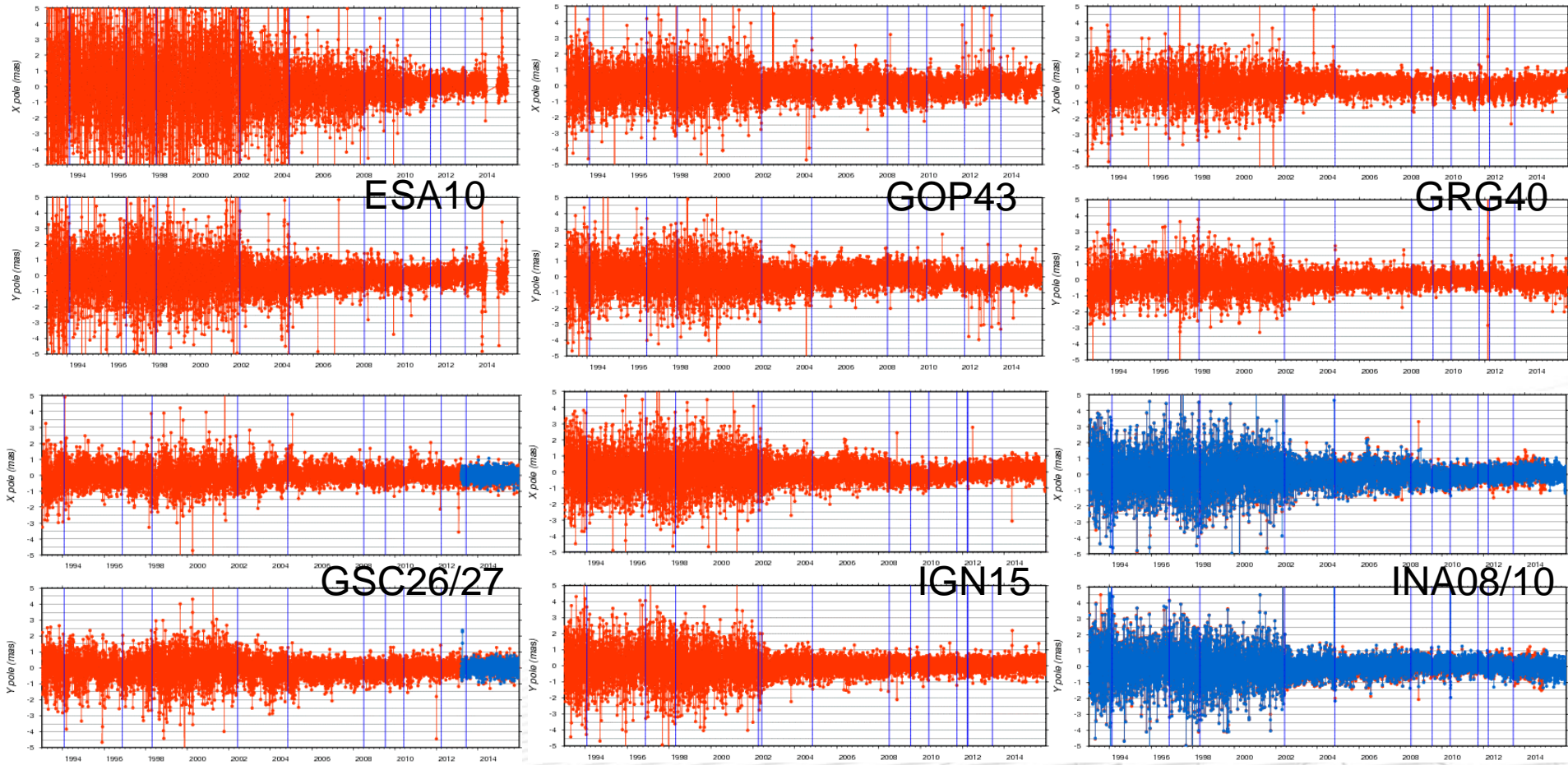


- INA 10 differs mainly from INA 08 by scale offset due to phase law including.
- Ty: negative linear trend between end of and Saral start and stabilized since.
- Scale increase and Tz jump early 2015.
- WRMS: degradation in all the directions correlated to the scale increase early 2012.

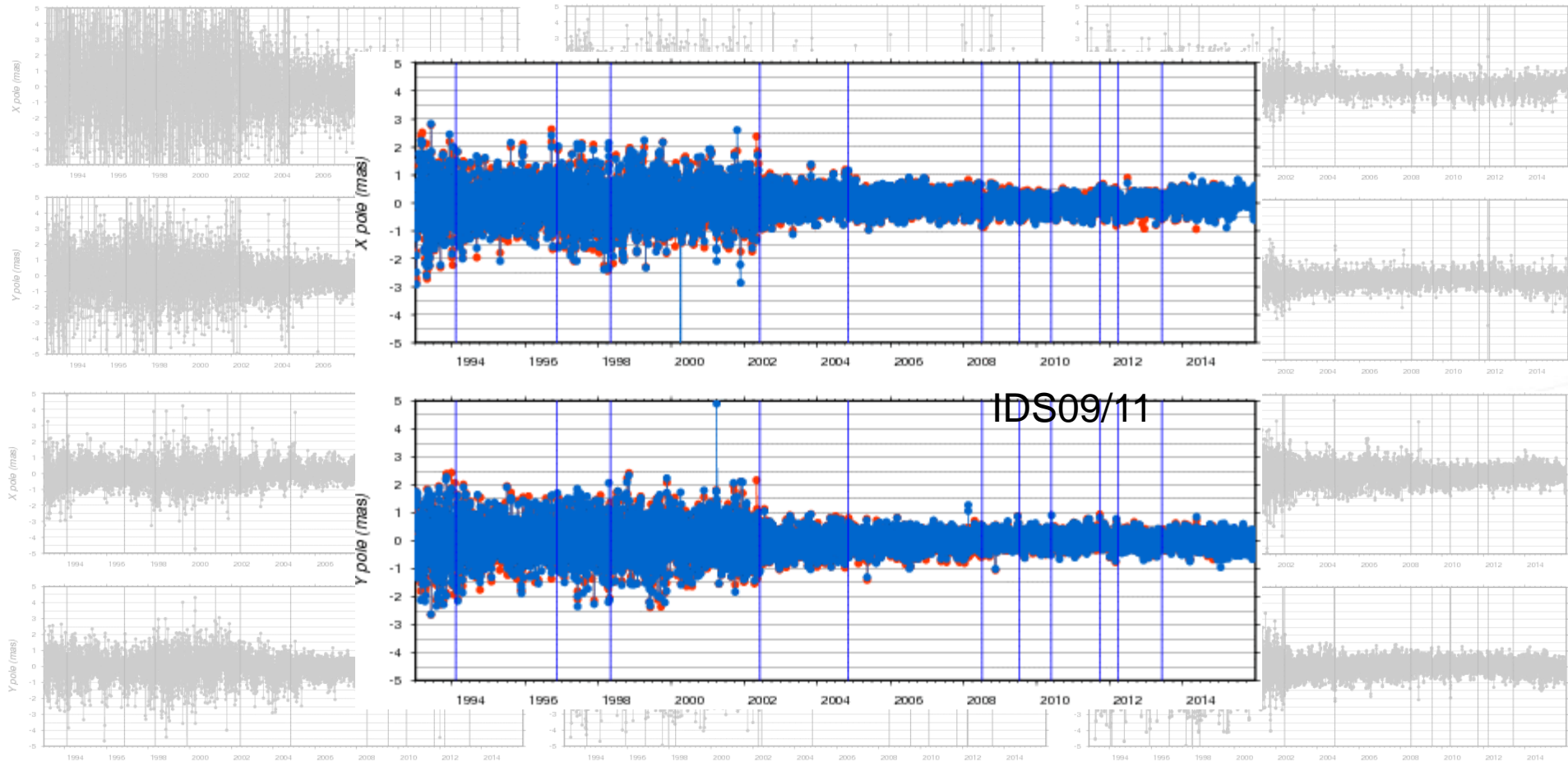


- IDS 09 and 11 give similar performances except for the scale since Saral including. Consequence of combined scale strategy.
- WRMS: degradation in all the directions late 2014 - correlated to the ITRF2014's time span ?

EOPs differences wrt IERS C04 aligned to ITRF2014



EOPs differences wrt IERS C04 aligned to ITRF2014



IDS 11 gives similar performances compared to IDS 09



<http://ids-doris.org>

IDS CC News

Page 13

- **Helmert parameters, WRMS of all the series (ESA 10, GOP 43, GRG 40, GSC 26/27, IGN 15, INA 08/10, IDS 11) are already available from the IDS webservice and IDS Data Centers.**
- **STCD files of all the series are already available from the IDS webservice and IDS Data Centers.**
- **EOPs differences wrt IERS C04 preliminary solution in ITRF2014 are also available from the IDS webservice.**
- **IDS CC started to implement the next protocol to deliver files to CDDIS.**
- **New paper titled «Horizontal and vertical velocities derived from the IDS contribution to ITRF2014, and comparisons with geophysical models» from G. Moreaux, F.G. Lemoine, D.F. Argus, A. Santamaría-Gómez, P. Willis, L. Soudarin, M. Gravelle, P. Ferrage was submitted on April 30th to GJI.**

IDS CC – What's next ?

- **Evaluation and combination from 2015 doy 361 to 2016 doy 87 by June 20th.**
- **Answer to the IDS Call on the Combination Center.**
- **Abstract submission to AGU 2016 – topic: spectral analysis of the all the IDS station position time series.**
- **Paper to write with C. Abbondanza, H. Capdeville, M. Bloßfeld and J.-M. Lemoine on the DGFI, JPL and IGN ITRF2014 solutions.**